

Spare Parts List GS 12

Edited: 12/90

Revised: 12/04

Part no.: 89001376

Summary

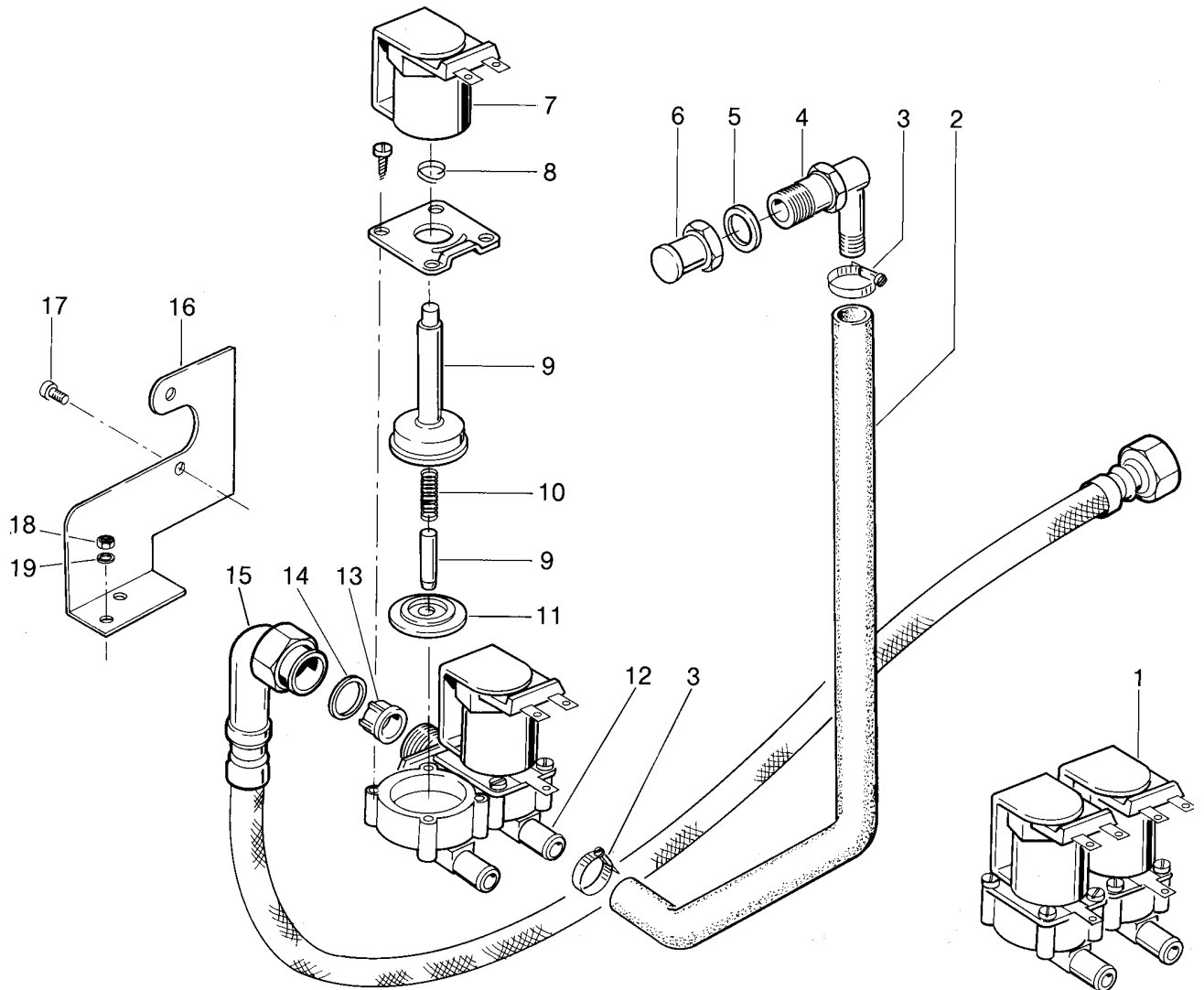
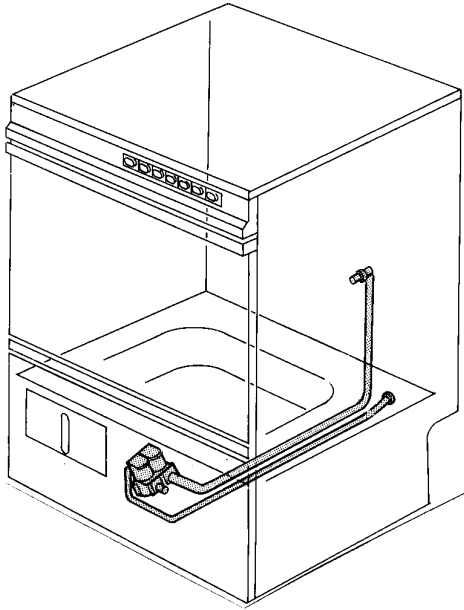
Water supply and inlet	Page 1 and 2
Water drain, tank heating and Mediamat	Page 3 and 4
Wash system I	Page 5 and 6
Wash system II	Page 7 and 8
Rinsing I	Page 9 and 10
Rinsing II	Page 11 and 12
Door	Page 13 and 14
Panel and filter	Page 15 and 16
Electrical parts I	Page 17 and 18
Electrical parts II	Page 19 and 20

Parts that have the note " Part made to order only!", are not in stock. This parts are made specially for your order and have a delivery time. They are not returnable.

Racks and accessories see separate list.

GS 12

Wasserzulauf und Wassereinlauf Water supply and inlet Alimentation et arrivée d'eau



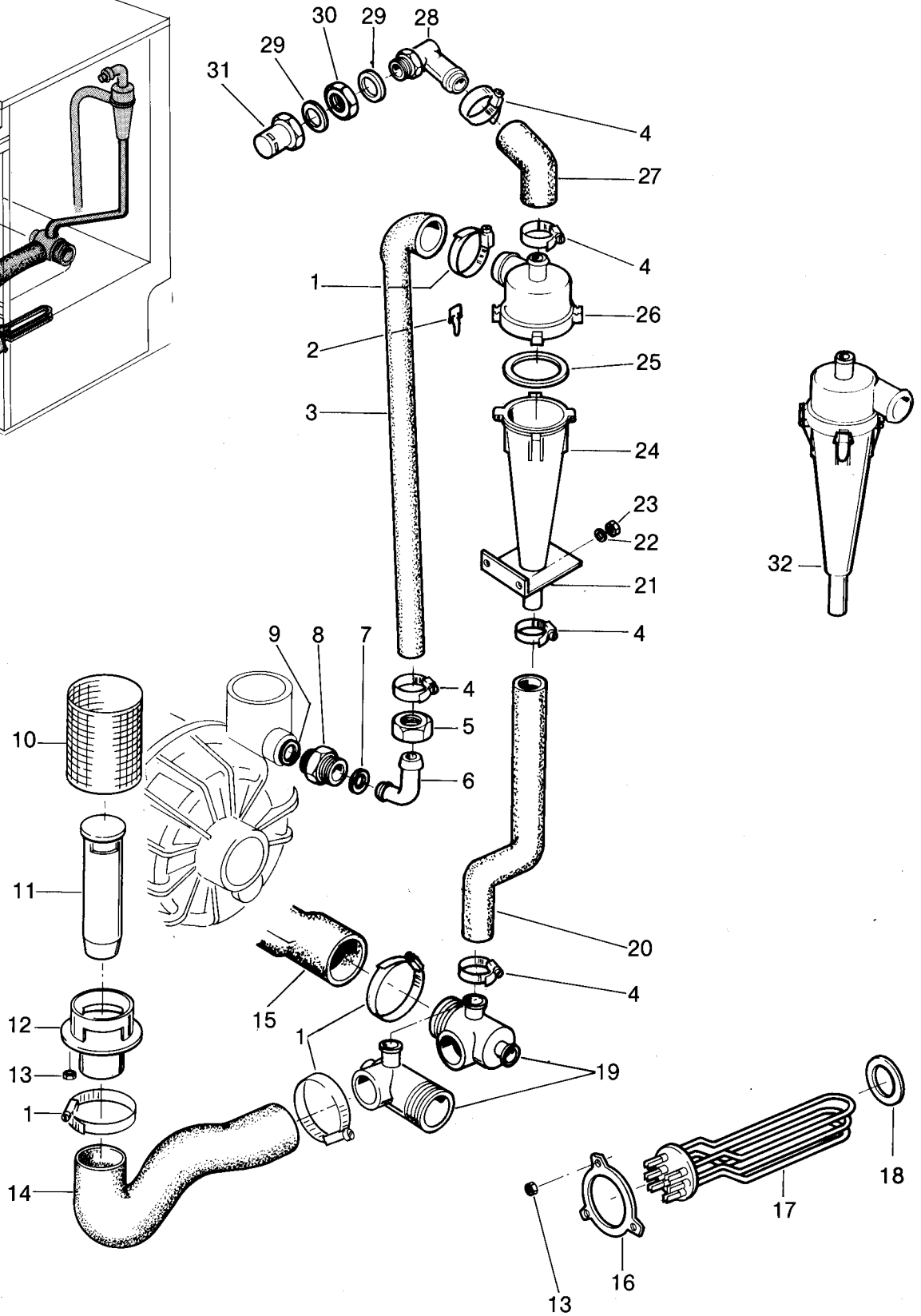
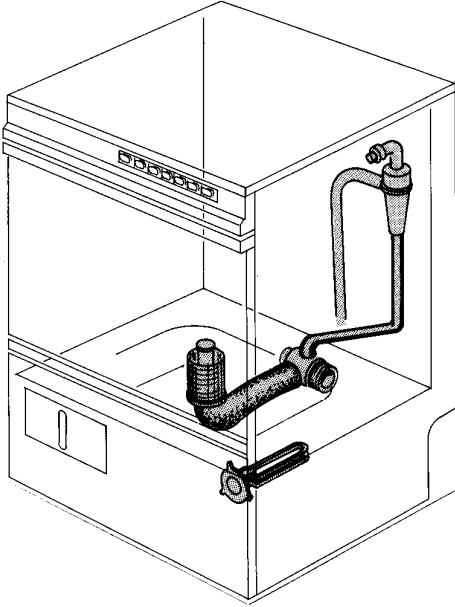
GS 12

Water supply and inlet

Pos.	Designation	Part No.	Notes
1	Double solenoid valve	31 06 182	
2	Tank inlet hose	40 03 047	
3	Hose clip 14-22 ø	28 02 301	
4	Connection 1/2" BSP x ø 14,5	5531007	Consist of Pos. 4,5,6
5	Seal ø 28 x ø 21 x 2,0	27 09 011	
6	Water inlet 1/2" BSP	5531007	Consist of Pos. 4,5,6
7	Coil 220-240 V / 50-60 Hz		Replaced by Pos.1
8	Spring for solenoid valve		
9	Plunger with bush		
10	Spring		
11	Diaphragm		
12	For solenoid valve bottom part		
13	Dirt sieve for solenoid valve	31 06 118	Red
14	Seal ø 24 x ø 17 x 2	27 09 009	
15	Metal hose	2901316	
16	Solenoid valve support	55 02 013	
17	Pan head screw M 4 x 8	20 10 210	
18	Hexagon nut M 5	21 01 303	
19	Spring washer B 5	23 03 302	
n.p.	Return valve 1/2" BSP	29 03 230	until 12/87

GS 12

Wasserablauf, Tankheizung und Mediamat Water drain, tank heating and Mediamat Ecoulement d'eau de la chauffage et Médiamat



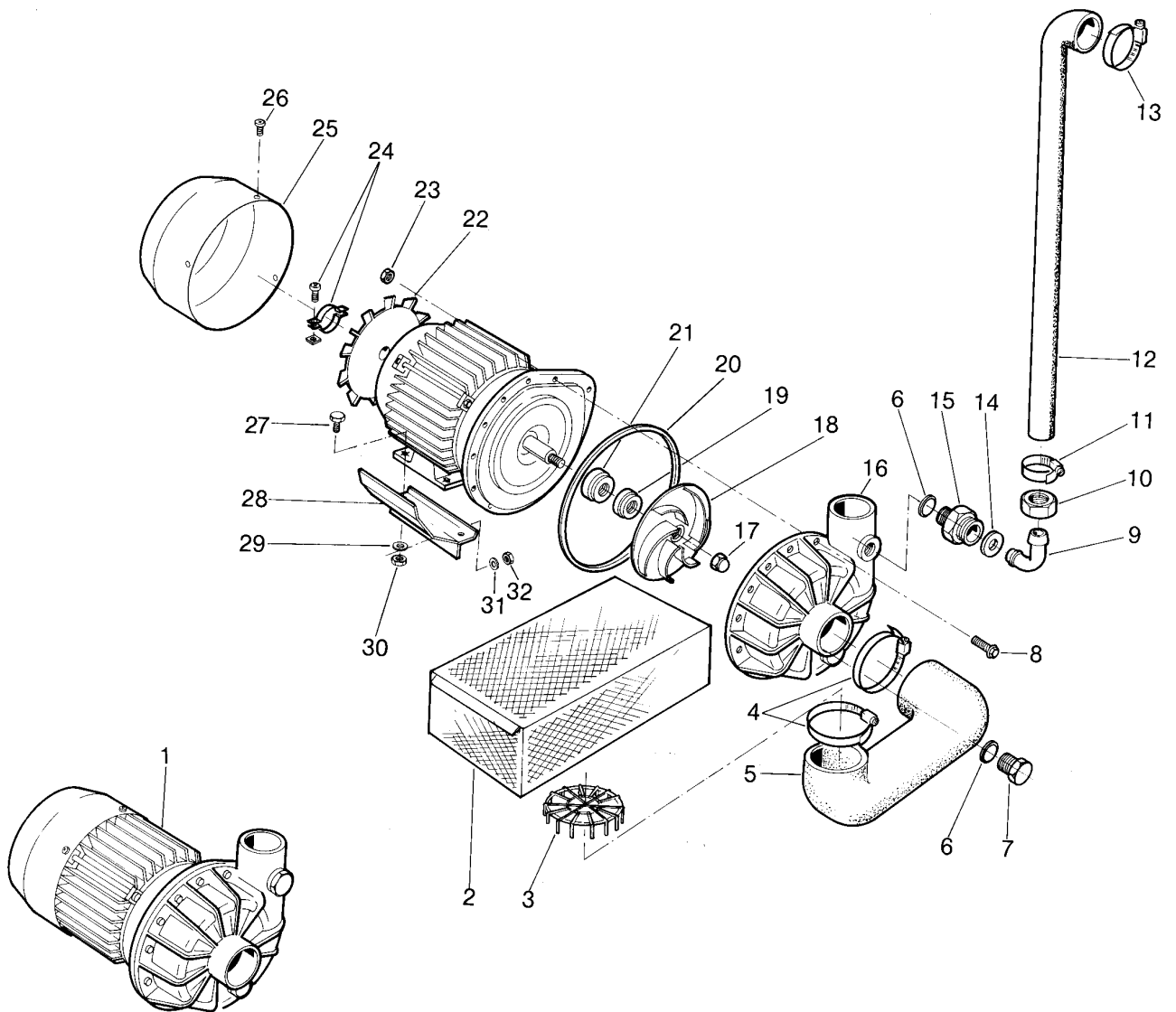
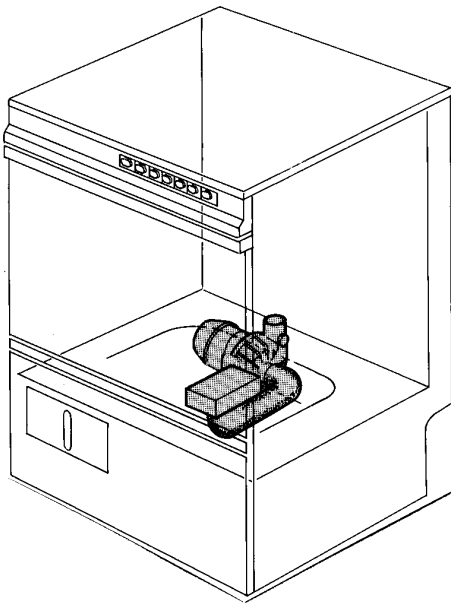
GS 12

Water drain, tank heating and Mediamat

Pos.	Designation	Part No.	Notes
1	Hose clip \varnothing 32 - \varnothing 52	28 02 309	
2	End piece locking	28 04 041	
3	Reducing hose \varnothing 30 x \varnothing 16 x 470	40 03 036	Cut to fit
4	Hose clip \varnothing 20 - \varnothing 30	28 02 109	
5	Coupling nut BSP 3/4" x 21	29 07 203	
6	Mediamat connection elbow	29 06 524	
7	Seal \varnothing 24 x \varnothing 19,5 x 1,5	27 09 010	
8	Mediamat conn. nipple 1/2" x 3/4" BSP x 32	30 11 502	
9	O-ring 3,5 x \varnothing 20	27 07 040	
10	Stand pipe filter; 185 mm	29 04 229	adapt
n.p.	Stand pipe	61004192	185 mm overflow height
12	Waste outlet connection cpl.	55 28 559	
13	Hexagon nut M 5	21 01 303	
14	Siphon	40 03 040	
15	Drain hose	40 03 044	only for drain to left
16	Clamping plate	01 17 003	
17	Heating element 3 kW 220/380 V	31 03 027	
n.p.	Heating element 3 kW 240/420 V	31 03 029	
18	O-ring 5,7 x \varnothing 47,2	27 07 069	
19	Mediamat drain	35 01 080	
20	Mediamat hose	40 03 041	
21	Supporting angle bracket	55 04 037	
22	Washer \varnothing 4,3	22 02 202	
23	Hexagon nut M 4	21 01 302	
24	Accelerator	35 01 035	
25	O-ring \varnothing 51 x 3	27 07 043	
26	Head piece inlet	35 01 124	
27	Hose elbow	40 03 045	
28	Mediamat connection	35 01 155	
29	Seal \varnothing 28 x \varnothing 21 x 2,0	55 31 001	Consist of Pos. 29,30,31
30	Hexagon nut BSP 1/2"	30 09 212	
31	Water inlet BSP 1/2" x \varnothing 26 x 34	55 31 001	Consist of Pos. 29,30,31
32	Mediamat connection unit cpl.	55 27 040	

GS 12

Waschsystem I Wash system I Système de lavage I



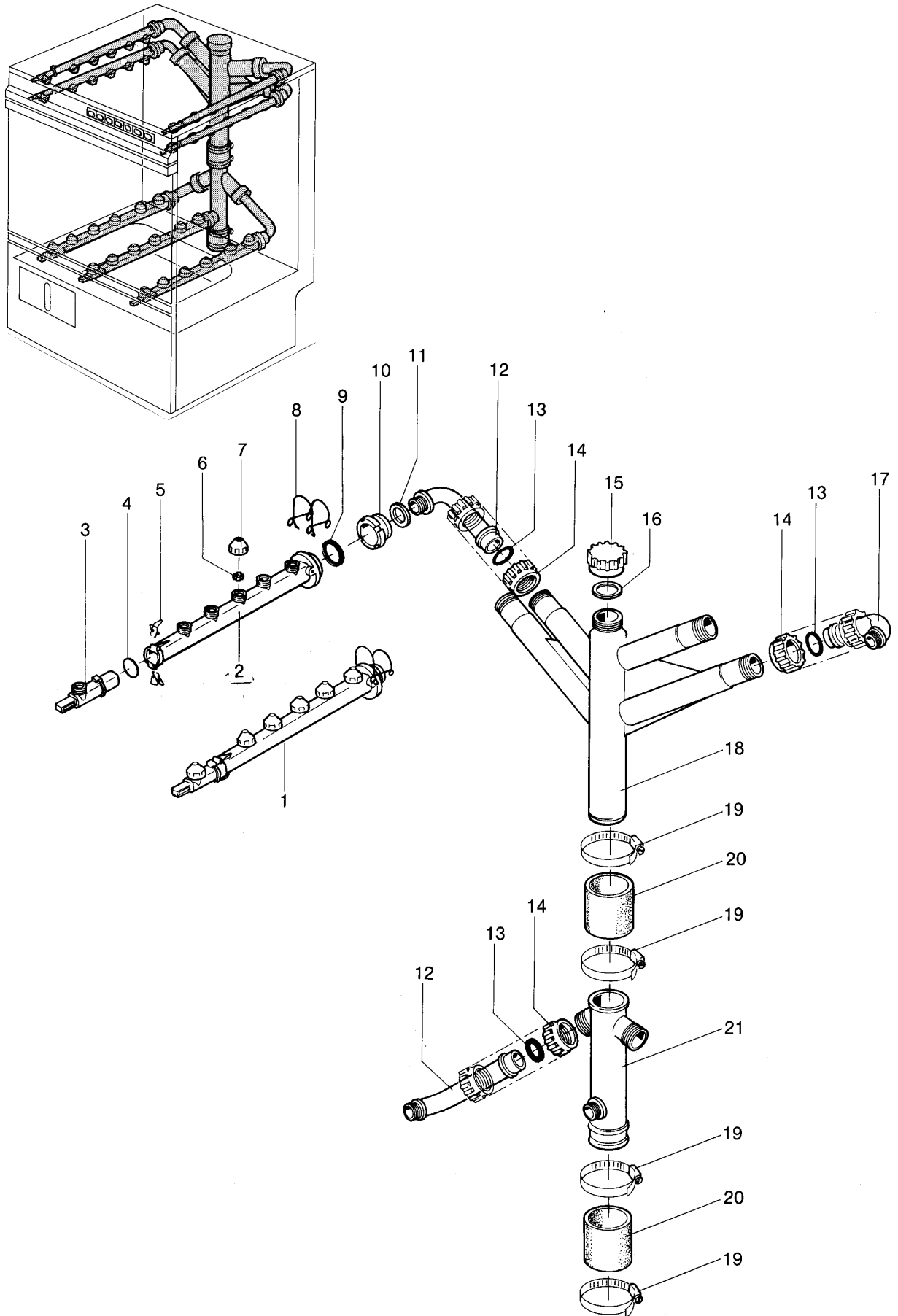
GS 12

Wash system I

Pos.	Designation	Part No.	Notes
1	Pump cpl. 230/400 50 Hz 1,1 kW	31 02 263	
n.p.	Pump cpl. 220/380 V 60 Hz 1,1 kW	31 02 267	
n.p.	Pump cpl. 230 V 50 Hz 1,1 kW	31 02 265	
2	Pump filter cpl.	55 13 027	
3	Suction filter	55 13 112	
4	Hose clip \varnothing 62 - \varnothing 82	28 02 120	
5	Hose elbow	40 03 042	
6	O-ring 3,5 x \varnothing 20	27 07 040	
7	Blind plug BSP 1/2" x 20,5	35 01 108	
8	Hexagon bolt M 4 x 22	20 01 020	
9	Mediamat connection elbow	29 06 524	
10	Coupling nut BSP 3/4" x 21	29 07 203	
11	Hose clip \varnothing 20 - \varnothing 30	28 02 109	
12	Reducing hose \varnothing 30 x \varnothing 16 x 345	60001699	
13	Hose clip \varnothing 32 - \varnothing 52	28 02 110	
14	Seal \varnothing 24 x \varnothing 19,5 x 1,5	27 09 010	
15	Mediamat conn. nipple 1/2" BSP x 3/4" x 32	30 11 502	
16	Pump housing	31 02 204	
17	Dome head nut M 8	21 10 305	self-securing
18	Impeller \varnothing 124 for 1,7 kW pump	31 02 207	
n.p.	Impeller \varnothing 109 50 Hz for 1,1 kW pump	31 02 273	
n.p.	Impeller \varnothing 96 60 Hz for 1,1 kW pump	31 02 274	
19	Seating ring	80 002670	Consist of Pos. 19,20,21
20	O-ring \varnothing 158 x 3,5	31 02 209	
21	Motor shaft seal	80 002670	Consist of Pos. 19, 20, 21
22	Fan wheel	31 02 211	Incl. Pos.24
23	Hexagon nut M 4	21 01 302	
24	Fixing clip cpl.	31 02 218	with screw and nut
25	Fan hood	31 02 212	
26	Lens head screw M 4 x 8	20 10 310	
27	Hexagon bolt M 8 x 20	20 01 312	
28	Pump angle cpl.	60000907	
29	Spring washer B 8	23 03 301	
30	Hexagon nut M 8	21 01 305	
31	Washer \varnothing 6,4	22 01 302	
32	Hexagon nut M 6	21 01 304	

GS 12

Waschsystem II Wash system II Système de lavage II



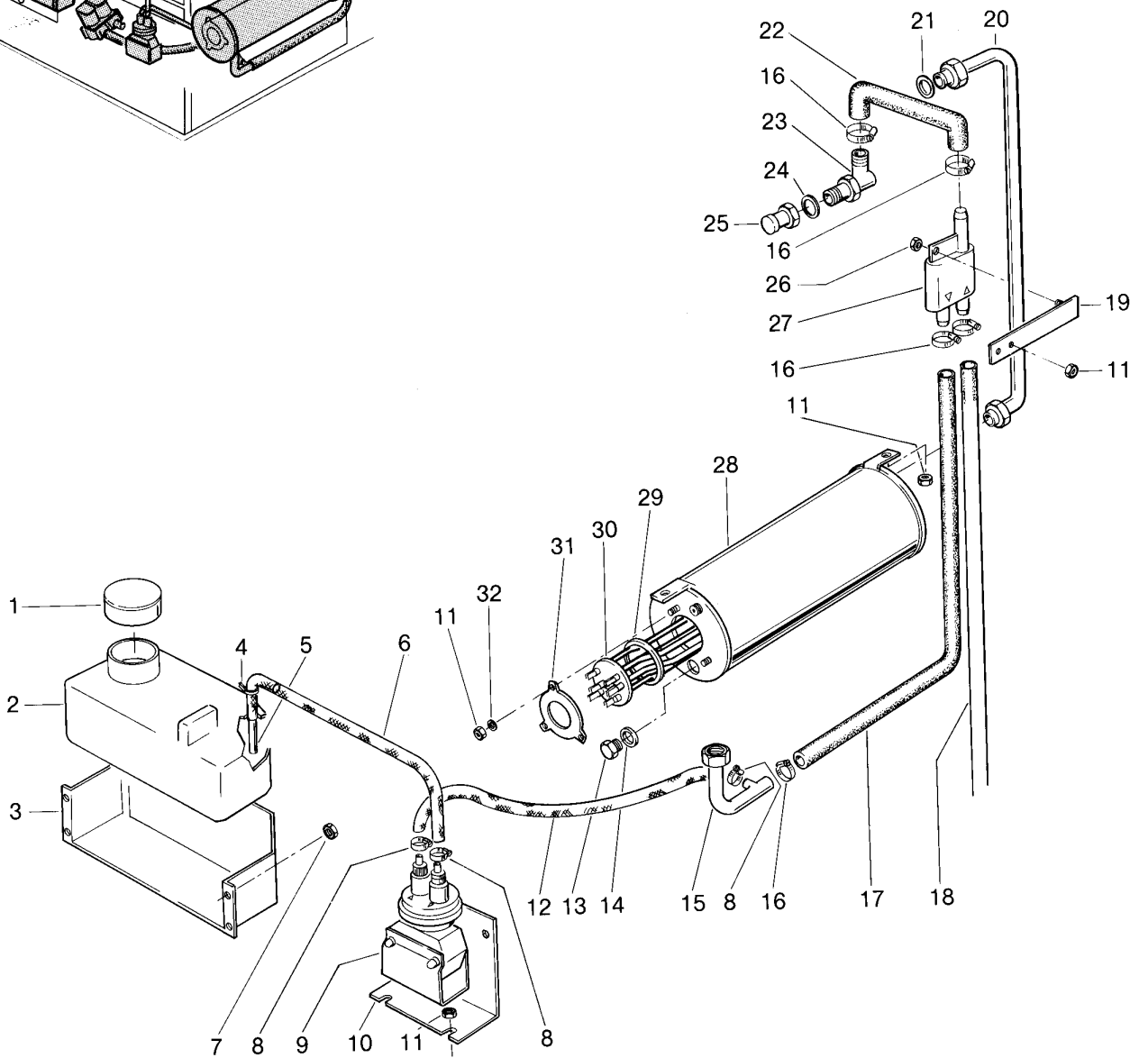
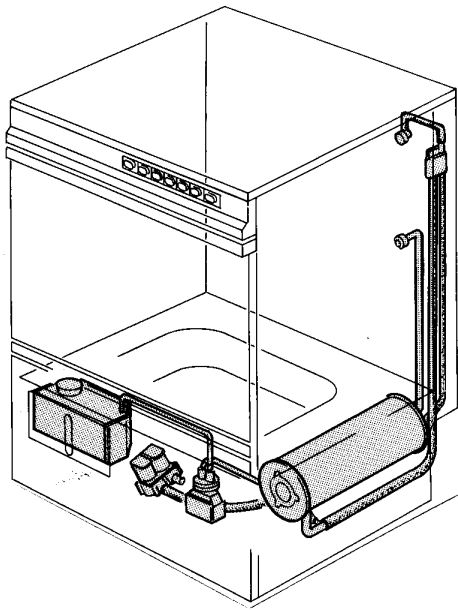
GS 12

Wash system II

Pos.	Designation	Part No.	Notes
1	Wash arm cpl.	55 07 057	with jets and end piece
2	Wash arm		Replaced by Pos. 1
3	End piece 90°	35 01 192	
4	O-ring ø 18 x 1,5	27 07 039	
5	End piece clip	28 04 041	
6	Jet swirl	60 002465	grey, consist of Pos. 6 and 7
7	Jet cap	61003031	grey
8	Wash arm clip	28 04 042	
9	O-ring ø 27 x 4	27 07 016	
10	Coupling nut	35 01 006	
11	Seal ø 36 x ø 26 x 2	27 01 003	
12	Manifold elbow long	35 01 149	
13	O-ring ø 24 x 3	27 07 066	
14	Coupling nut	35 01 004	
15	Cap	35 01 158	
16	Seal ø 39 x ø 32 x 2,0	27 02 001	
17	Manifold elbow short	35 01 150	
18	Wash manifold top part	35 01 154	
19	Hose clip ø 47 x ø 67	28 02 115	
20	Pump hose ø 50 x 4,5 x 65 lg.	40 02 012	Per meter
21	Wash manifold bottom part	35 01 018	

GS 12

Nachspülung I Rinsing I Rinçage I



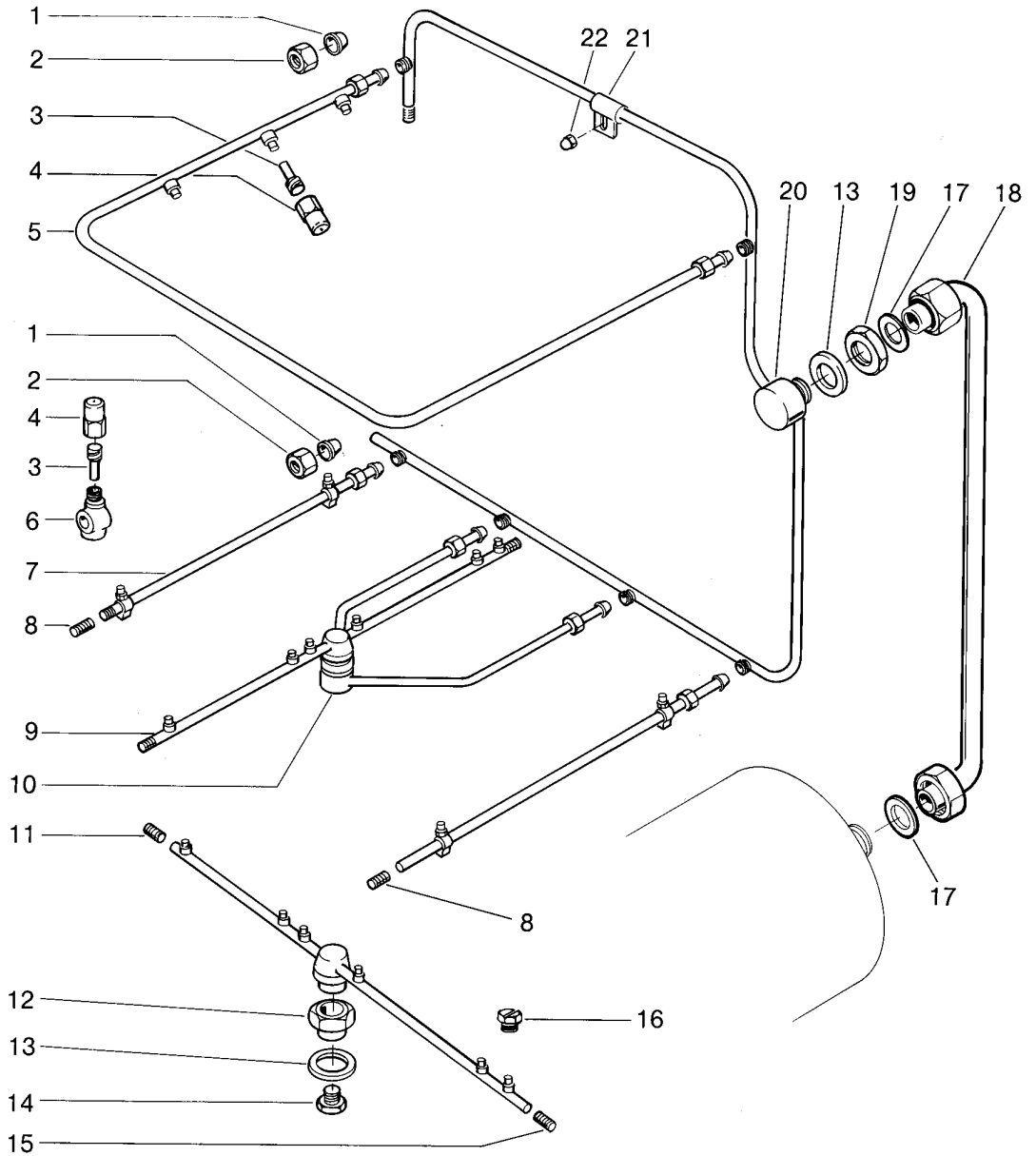
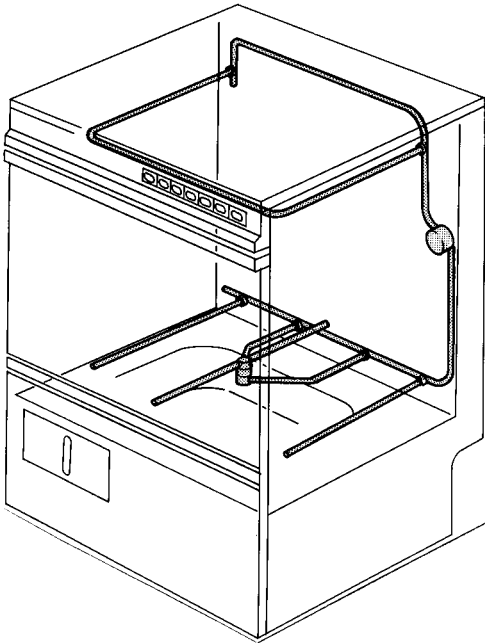
GS 12

Rinsing I

Pos.	Designation	Part No.	Notes
1	Container cap	60002216	
2	Rinse aid container	35 02 022	
3	Container support	35 01 541	
4	Wire house clip	28 02 348	
5	Suction pipe	55 25 063	
6	Hose \varnothing 6 x 1,5 x 450	40 01 024	per meter
7	Hexagon nut M 4	21 05 300	self-securing
8	Wire house clip	28 02 348	
9	Dispenser ELT 10 GS left cpl.	55 28 278	
10	Dispenser support bracket	60000314	
11	Hexagon nut M 5	21 01 203	
12	Hose \varnothing 5 x 1,5 x 335	40 01 024	per meter
13	Hexagon bolt M 10 x 16	20 01 352	
14	Seal \varnothing 18 x \varnothing 10 x 1,5	27 09 013	
15	Boiler inlet elbow	55 09 055	with DVGW as from 1/88 bis 12/87 55 09 043
16	Hose clip \varnothing 14 - \varnothing 24	28 02 108	
17	Hose \varnothing 13 x 3,5 x 1015	40 02 029	per meter
18	Hose \varnothing 13 x 3,5 x 1215	40 02 029	per meter
19	Support plate cpl.	55 04 056	
20	Rinse inlet connection cpl.	55 11 057	
21	Seal \varnothing 24 x \varnothing 19,5 x 1,5	27 09 010	
22	Shaped hose	40 03 053	
23	Connection 1/2" BSP x 14,5	55 31 007	consist of Pos. 23, 24, 25
24	Seal \varnothing 28 x 21 x 2,0	27 09 011	
25	Water inlet 1/2" BSP	55 31 007	Consist of pos. 23, 24, 25
26	Hexagon nut M 6	21 01 204	
27	Backflow restrictor	35 01 193	
28	Boiler	55 12 033	
29	O-ring	27 07 069	
30	Heating element 5 kW 3 x 220/380 V	31 03 030	
31	Clamping plate	01 17 003	
32	Washer \varnothing 5,3	22 02 203	
n.p.	Boiler elbow	55 09 043	Without DVGW until 12/87
n.p.	Reinforced hose \varnothing 13 x 3,5	40 02 029	for 55 09 043, per meter

GS 12

Nachspülung II
Rinsing II
Rinçage II



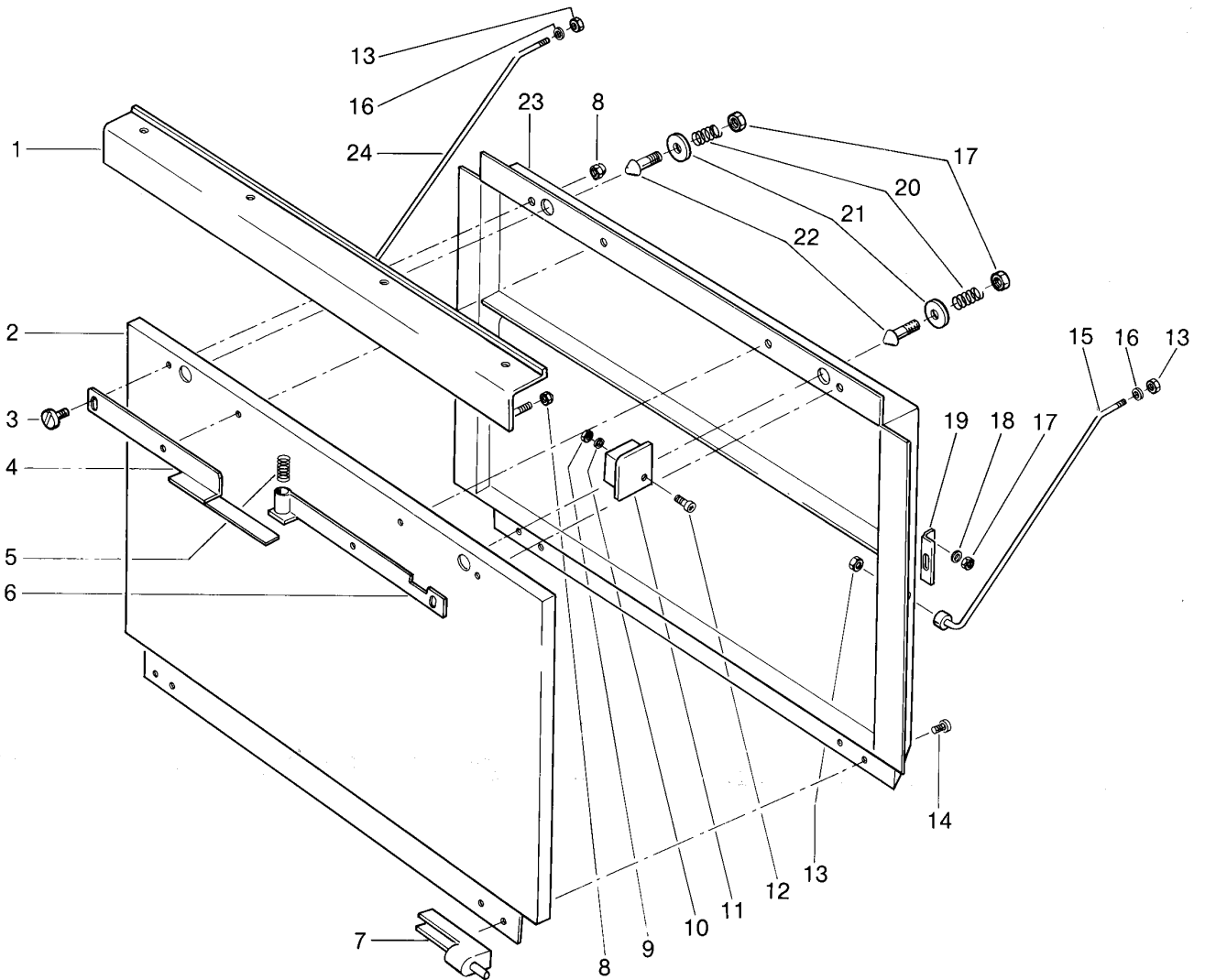
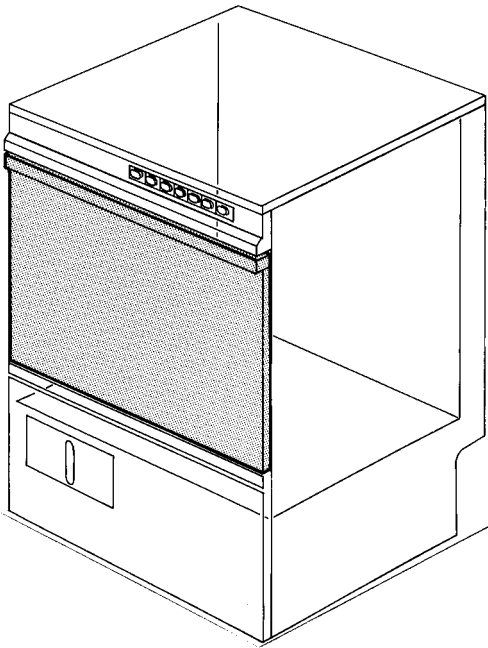
GS 12

Rinsing II

Pos.	Designation	Part No.	Notes
1	Olive ø 10	29 07 303	
2	Coupling nut BSP 3/8"	29 07 200	
3	Spray jet swirl	65002755	
4	Spray jet cap	65002754	
5	Top rinse manifold cpl.	55 10 075	
6	Rinse jet base	55 10 008	
7	Bottom rinse arm cpl.	55 10 076	
8	Grub-screw M 9 x 40	20 30 502	black
9	Revolving arm cpl.	55 10 078	
10	Revolving arm support	55 10 077	
11	Grub-screw M 9 x 0,75 x 6 lg.	29 10 238	
12	Revolving arm socket	35 01 161	
13	Seal ø 34 x ø 27 x 2,0	27 09 025	
14	Revolving arm screw M 14 x 1	20 19 204	
15	Grub-screw M 9 x 0,75 x 12 lg.	29 10 234	with O-ring 27 07 042
16	Flat slotted rinse jet	29 10 312	
17	Seal ø 24 x ø 19,5 x 1,5	27 09 010	
18	Rinse connection cpl.	55 11 057	
19	Locking nut BSP 3/4"	61002626	
20	Rinse manifold cpl.	55 09 030	
21	Pipe clip	55 04 057	
22	Dome head nut M 4	21 10 302	

GS 12

Türe Door Porte



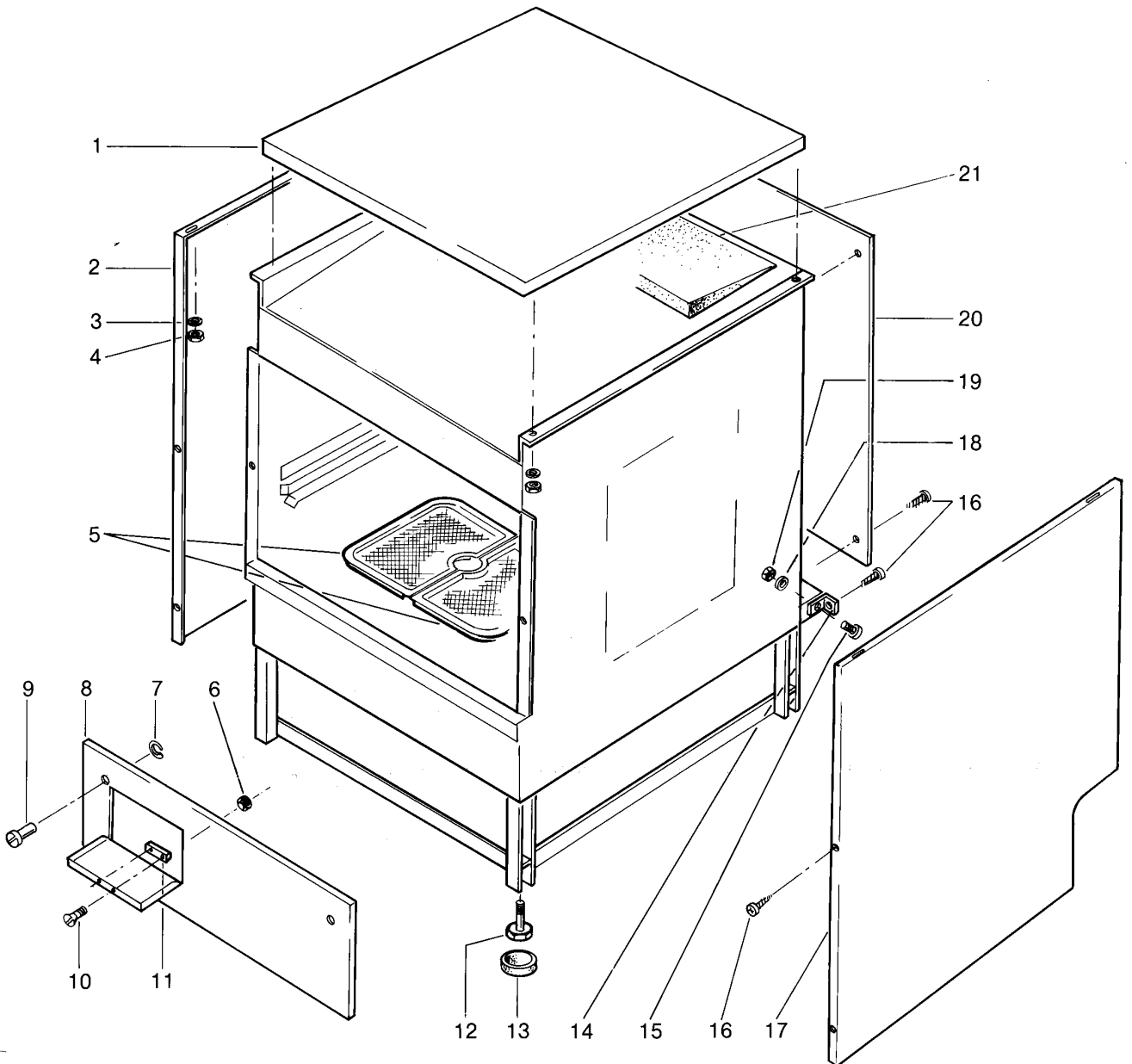
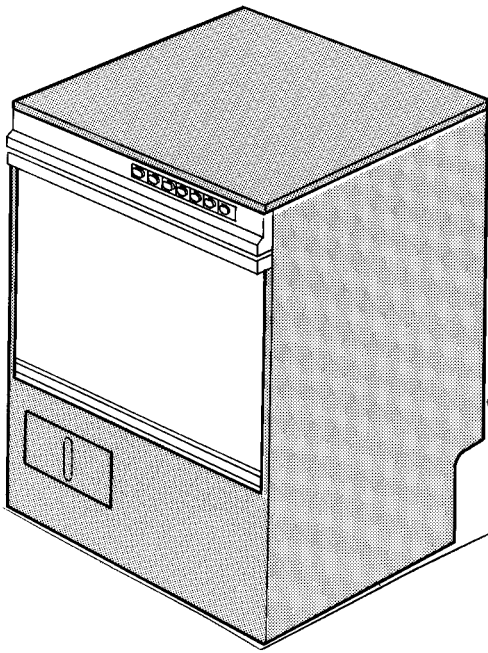
GS 12

Door

Pos.	Designation	Part No.	Notes
1	Door handle	55 15 101	
2	Door outer panel	55 15 098	
3	Screw for door locking M 4	20 19 308	
4	Locking angle left	55 15 100	
5	Pressure spring	28 04 009	
6	Locking angle right	55 15 099	
7	Door hinge	35 01 151	
8	Dome head nut M 4	21 10 302	
9	Hexagon nut M 3	21 01 201	
10	Seal M 3	22 08 501	
11	End piece corner right	35 01 170	
n.p.	End piece corner left	35 01 171	
12	Lens head countersunk screw M 3x6	20 12 300	
13	Hexagon nut M 6	21 05 304	self-securing
14	Lens head countersunk screw M 4x12	20 12 314	
15	Door stay right	55 15 096	
16	Seal M 6	22 08 504	
17	Hexagon nut M 5	21 01 303	
18	Washer \varnothing 5,3	22 02 203	
19	Sliding piece	35 01 172	
20	Pressure spring	28 04 013	for pos. 22
21	Washer \varnothing 5,2 x \varnothing 20 x 2	22 02 314	after 6/89
22	Door catch bolt	20 19 303	
23	Door base frame	55 15 095	
24	Door stay left	55 15 097	
n.p.	Door cpl.	55 15 094	
n.p.	Silicone profile seal 560 mm lg.	62001618	per metre, as from 11/93
n.p.	Silicone glue	34 03 012	

GS 12

Verkleidung und Sieb Panel and filter Habillage et tamis



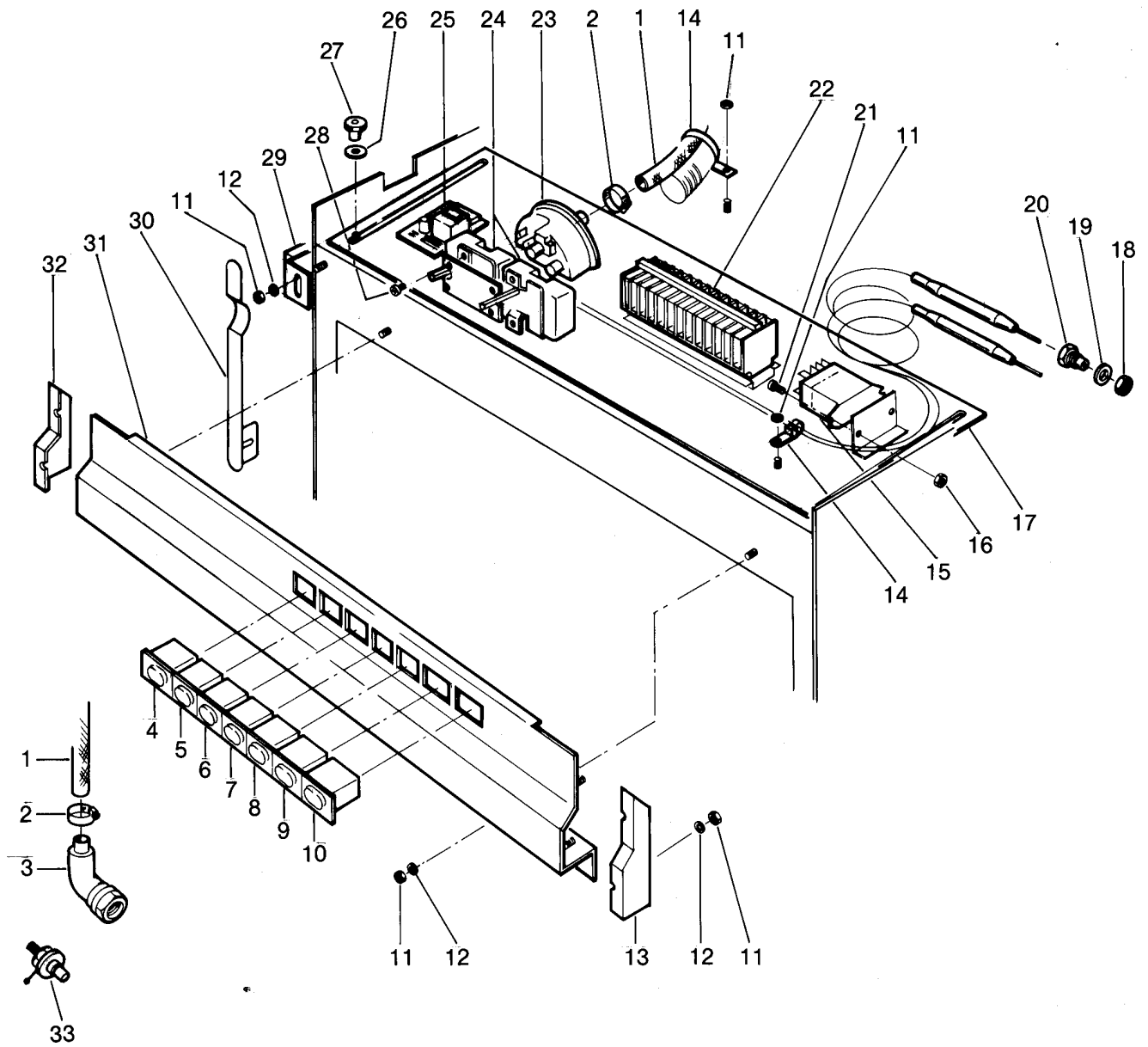
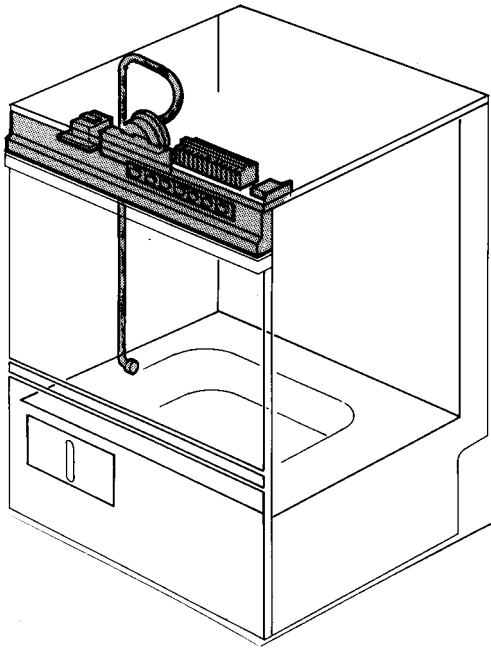
GS 12

Panel and filter

Pos.	Designation	Part No.	Notes
1	Work top	55 03 072	
2	Lateral panel left	55 03 070	
3	Washer ø 4,3	22 02 302	
4	Hexagon nut M 4	21 05 202	
5	Scrap tray	60003950	2 X
6	Hexagon nut M 3	21 01 301	
7	Spring washer	23 12 300	
8	Front panel	55 03 069	
9	Threaded cap	28 14 331	
10	Countersunk head screw M 3 x 16	20 08 205	
11	Magnetic spring catch	28 05 044	
12	Hexagon bolt M 10 x 60	20 01 360	
13	Protective cap	35 03 018	
14	Angle fixing plate	55 02 019	
15	Lens head cylinder screw M 5 x 8	20 10 221	
16	Pan head tapping screw B 3,9 x 16	20 20 300	
17	Lateral panel right	55 03 071	
18	Washer ø 5,3	22 01 300	
19	Hexagon nut M 5	21 01 303	
20	Rear panel short, 665 mm isolated	55 03 120	
21	Angled insulation		No more available
n.p.	Rear panel long, 800 mm	55 03 118	

GS 12

Elektroteile I Electrical parts I Matériel électrique I



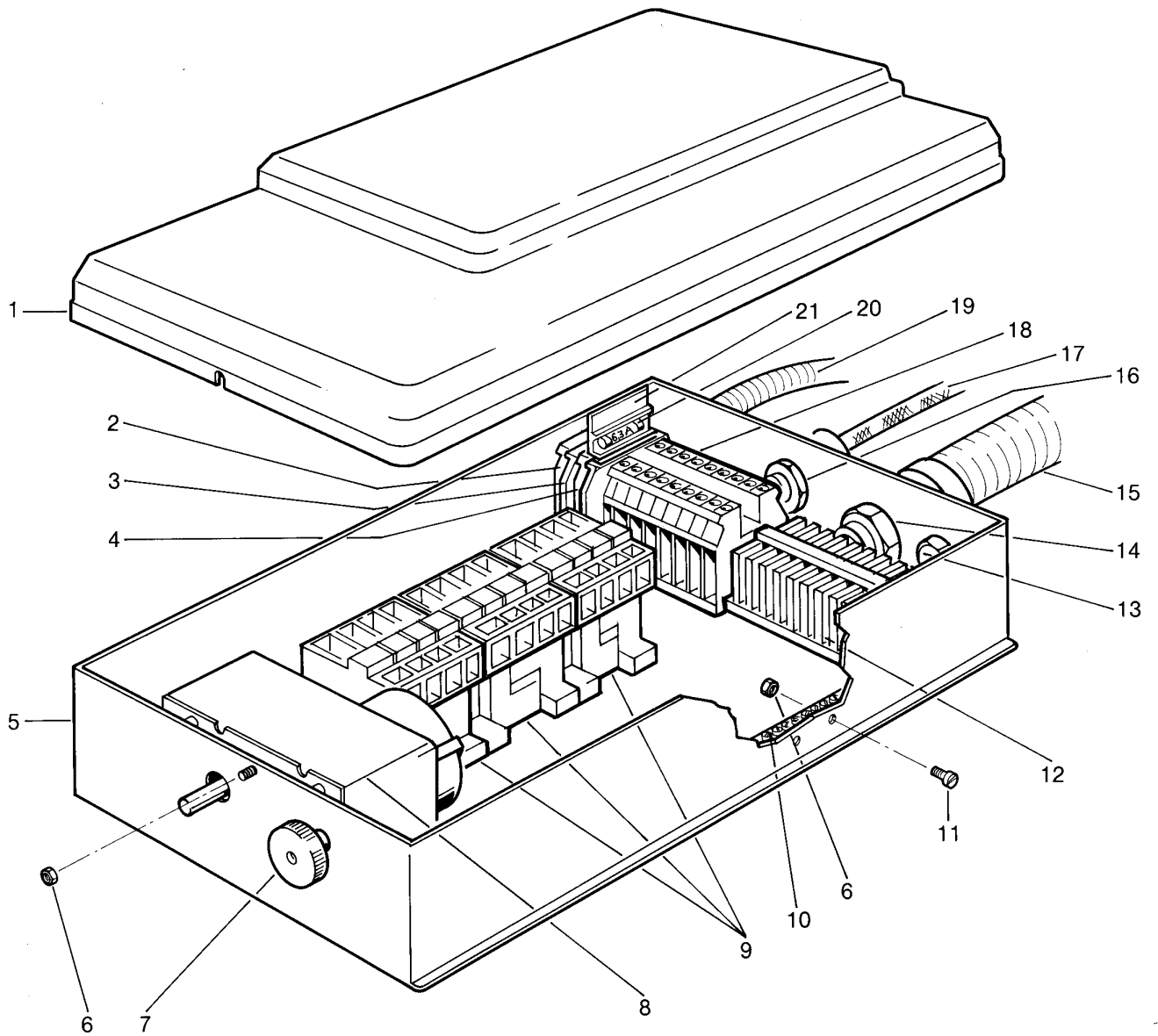
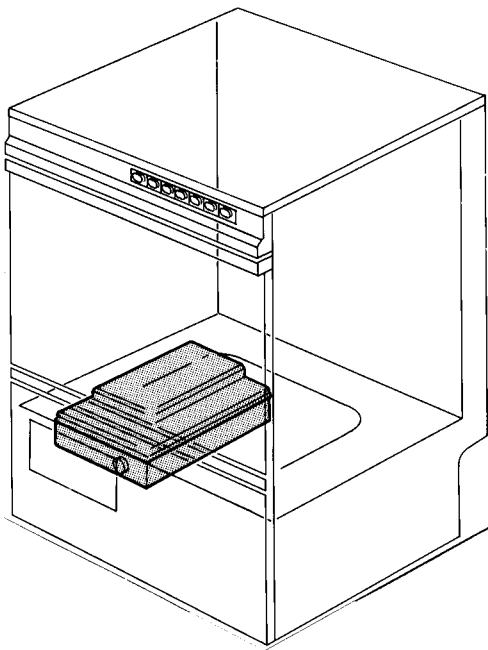
GS 12

Electrical parts I

Pos.	Designation	Part No.	Notes
1	Hose \varnothing 5 x 3 x 1200 lg.	40 01 024	per metre
2	Wire house clip	28 02 348	
3	Air chamber cpl.	55 04 030	
4	Pressure switch green, oval	31 24 185	ON-OFF (blue edge)
5	Lamp white 220 V, oval	31 08 116	TEMPERATURE (blue edge)
6	Pressure key button white, oval	31 24 153	I-Min.-Programme (blue edge)
7	Pressure key button white, oval	31 24 130	II-Min.-Programme (blue edge)
8	Pressure switch white, oval	31 24 128	WASHING (blue edge)
9	Pressure key button white, oval	31 24 129	RINSING (blue edge)
10	Lamp white 12 V, oval	60003670	WACO (blue edge)
o.P.	Thermometer	32 01 035	
o.P.	Thermometer	32 01 036	
o.P.	Pressure switch	31 24 089	ON-OFF quadratic
o.P.	Pressure switch white	31 24 094	1 Min.Progr. (quadr.)
o.P.	Pressure switch white	31 24 095	2 Min.Progr. (quadr.)
o.P.	Pressure switch white	31 24 096	WASHING man. (quadr.)
o.P.	Pressure switch white	31 24 097	RINSING man.(quadr.)
o.P.	Check indication	31 24 098	WAKO (quadr.)
11	Hexagon nut M 4	21 05 202	
12	Washer \varnothing 4,3	22 02 302	
13	End piece right	35 01 166	
14	Cable clamp	31 20 008	
15	Mini-relay	31 13 045	
16	Hexagon nut M 3	21 01 301	
17	Control panel cpl.	60 001696	without electrical parts,no more available
18	Locking nut M 14 x 1	31 25 002	
19	Seal \varnothing 14,2 x \varnothing 20 x 2,0	27 09 036	
20	Gland for thermostat	31 25 001	
21	Cylinder screw M 3 x 8	20 09 202	
22	Terminal strip	31 09 025	15 pieces
23	Level switch 100/60	31 26 020	
24	Thermostat 1750 lg.	31 25 013	for tank and boiler
25	P-H printed circuit board WACO	31 13 048	
26	Washer \varnothing 5,2 x \varnothing 20 x 2	22 02 314	
27	Knurled nut M 5	21 12 003	
28	Pan head screw M 4 x 8	20 10 309	
29	Limit switch cpl.	55 19 007	
30	Switch spring	55 19 041	as from 10/84
31	Front control panel for rectangular switches	55 03 133	w.panel edges wo.switches,after 8/90
n.p.	Type strip GS 12		1 x 2803147 and 1 x 2803148
32	End piece left	35 01 167	
33	Built-in electrode cpl.	31 13 043	for Waco
n.p.	Symbol plate for panel	28 03 226	
n.p.	Wire assortment - control panel	60001724	
n.p.	Wire assortment - limit switch	31 23 063	
n.p.	Terminal strip base frame	31 09 002	

GS 12

Elektroteile II Electrical parts II Matériel électrique II



GS 12

Electrical parts II

Pos.	Designation	Part No.	Notes
1	Contacteur control box cover	60001664	
2	Earth terminal yellow/green	31 09 064	
3	Terminal block blue	31 09 050	
4	Fuse terminal	31 09 063	
5	Contacteur control box	55 18 038	
6	Hexagon nut M 4	21 01 302	
7	Knurled nut M 6	21 12 004	
8	Programme switch	31 05 119	
9	Contacteur	31 04 161	
10	Earth terminal block	31 09 094	
11	Pan head screw M 4 x 12	20 10 312	
12	Terminal strip 13-fold	55 19 070	made of 31 09 025
13	Blind plug PG 16	31 10 025	
n.p.	Hexagon nut for PG 16	31 10 110	
14	Cable gland PG 21	31 10 070	
n.p.	Hexagon nut for PG 21	31 10 012	
15	Wiring loom I	31 23 064	
16	Cable gland PG 11	31 10 044	
n.p.	Hexagon nut for PG 11	31 10 045	
17	Mains cable	31 23 132	
18	Terminal strip grey	31 09 049	
19	Wiring loom	31 23 065	relay box/control panel
20	Fuse 250 V 6,3 Amp.	31 11 043	
21	Fuse insert piece	31 09 072	
	Relay box contactor control box	31 23 060	