

Spare Parts List GS 29

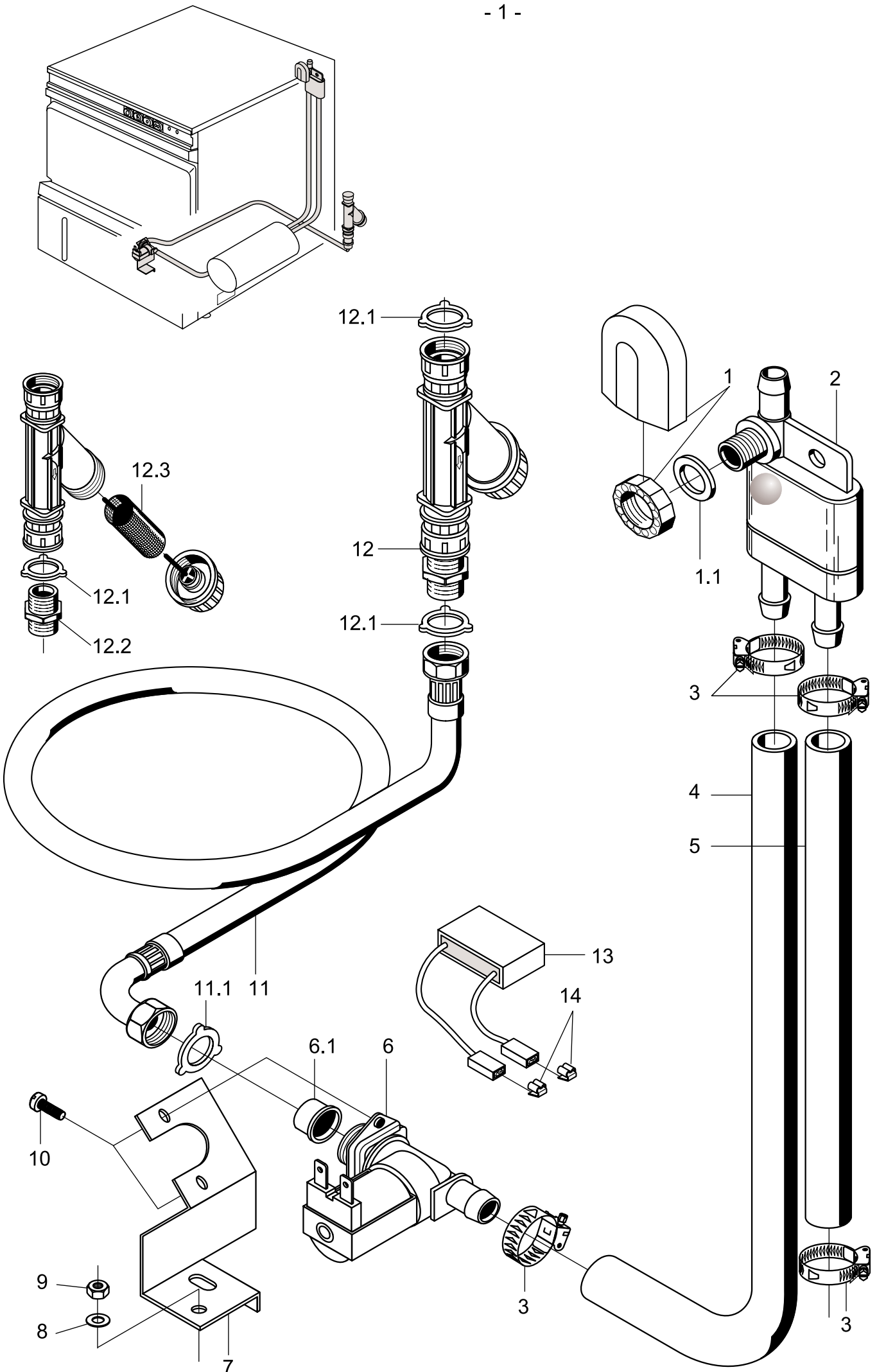
Edited 10/93
Revised 10/00

Part no. 89000968

Summary

Water supply	Page 1 and 2
Water supply (Tundish GB)	Page 3 and 4
Water drain and tank heating	Page 5 and 6
Wash system I	Page 7 and 8
Wash system II	Page 9 and 10
Rinsing I (pressurised boiler)	Page 11 and 12
Rinsing I (AquaMatik)	Page 13 and 14
Rinsing II...223 460	Page 15 and 16
Rinsing II 223 461...396 847	Page 17 and 18
Rinsing II 396 848...	Page 19 and 20
Dosing	Page 21 and 22
Panelling, base frame and accesories	Page 23 and 24
Door	Page 25 and 26
Electrical parts I	Page 27 and 28
Electrical parts II	Page 29 and 30
Drain pump	Page 31 and 32

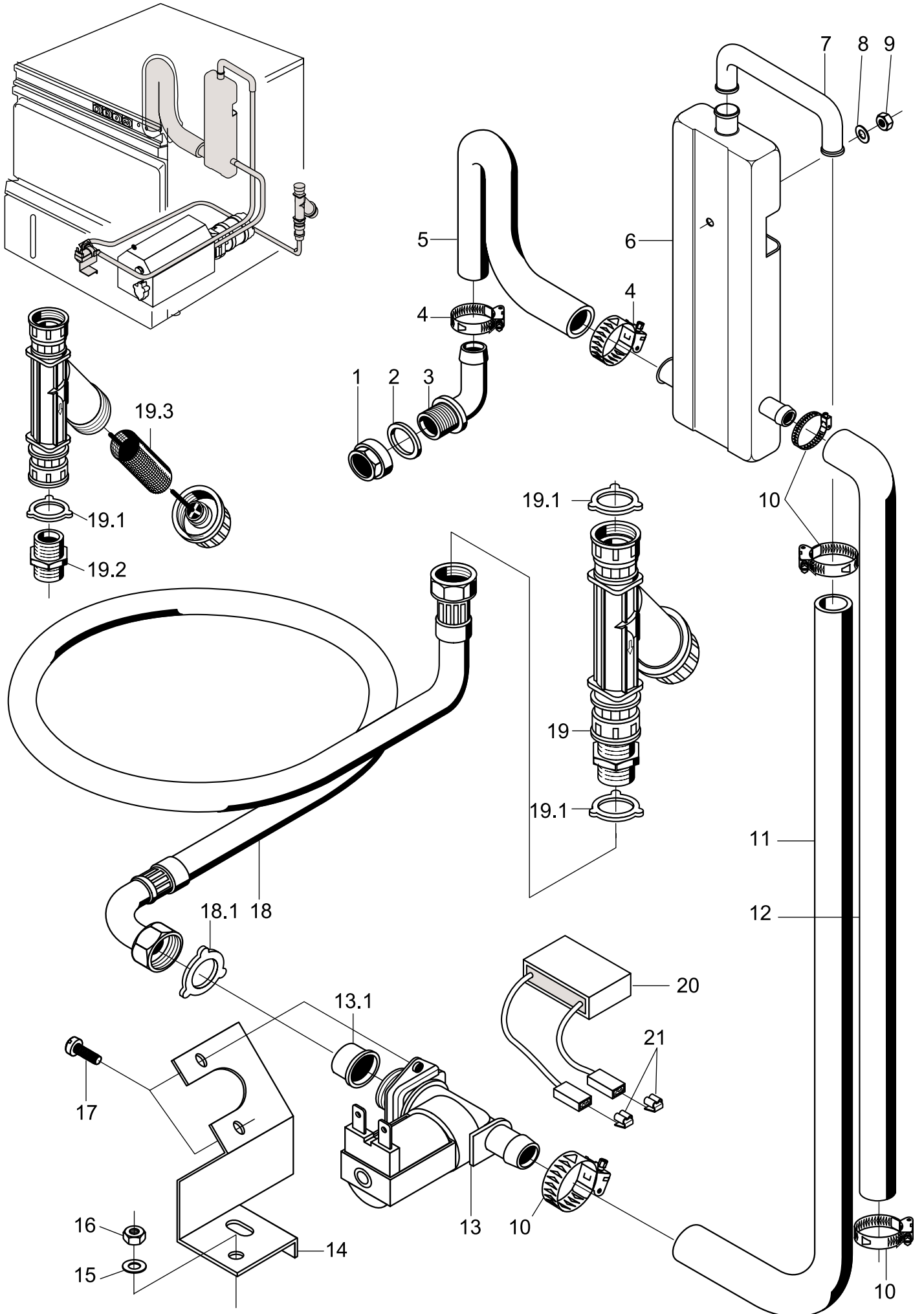
Racks and accessories see separate list. In column „Pc.“ the necessary number is indicated, as far as more than part is installed and if the part is no standard part.



GS 29

Water supply

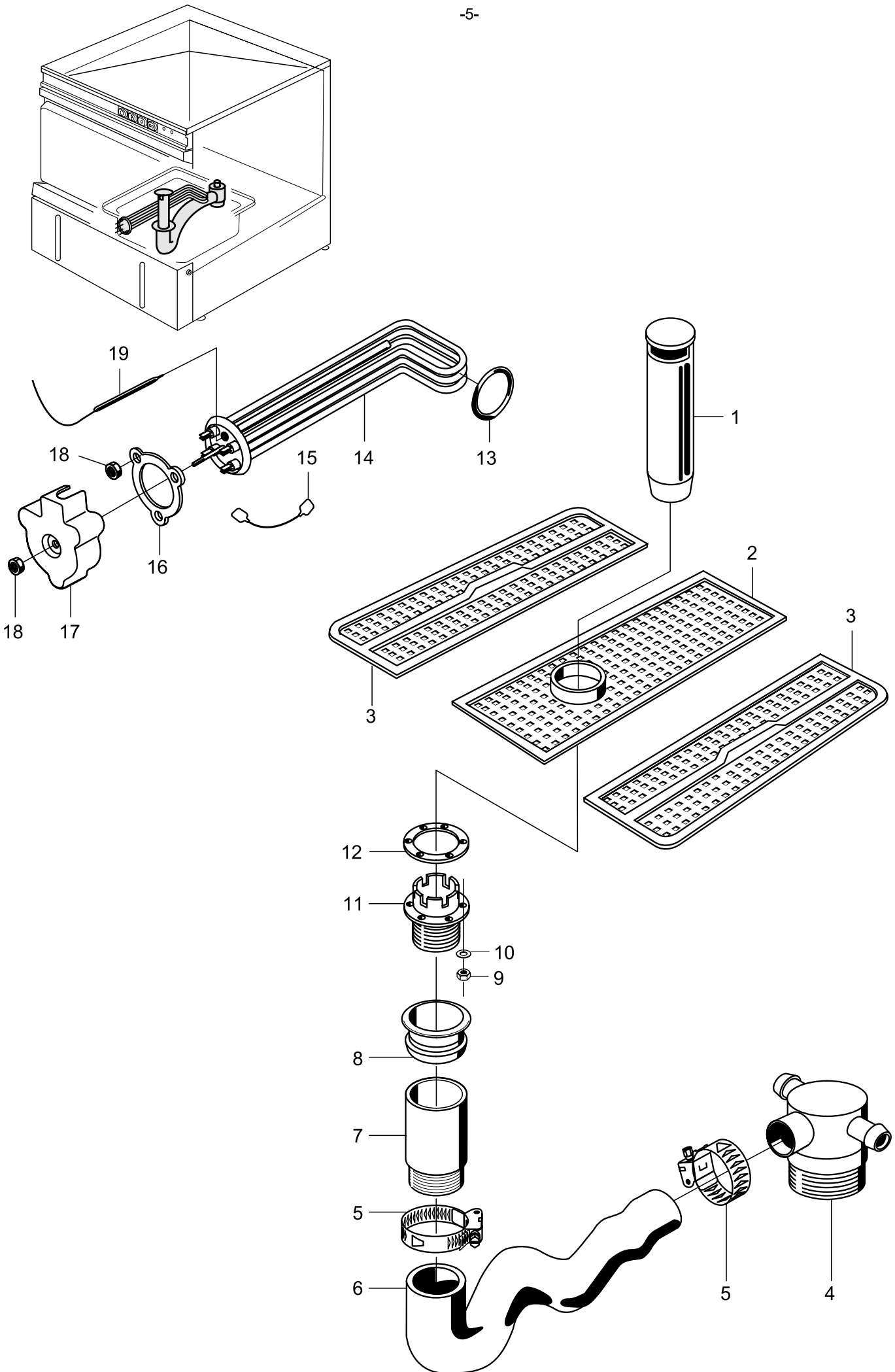
Item	Designation	Part no.	Pc.	Notes
1	Set tank inlet	61004545		Incl. item 1.1
1.1	Seal \varnothing 24 x \varnothing 17 x 2	62001366		
2	Backflow restrictor, sidep	35 01 194		
3	Hose clip \varnothing 14 - \varnothing 24	28 02 108		
4	Hose DN 13,5 x 3.5 x 1000	40 02 002		Per metre
5	Hose DN 13.5 x 3.5 x 830	40 02 002		Per metre
6	Solenoid valve (flow controller 15l); 220-240V; 50/60Hz	31 06 180		Incl. item 6.1
	Solenoid valve (flow controller 15l); 180-220V; 50/60Hz	31 06 198		Japan
6.1	Dirt strainer	31 06 186		
7	Solenoid valve support	62001891		
8	Washer \varnothing 5.3 x \varnothing 12 x 0,8	22 01 300		
9	Hex nut M 5, self-securing	21 05 302		
10	Pan-head screw M 4 x 8	20 10 309		
11	Metal hose DN 15 x 1500; G 3/4"	29 01 303		
11.1	Seal \varnothing 24 x \varnothing 16 x 3	80002241	2	
n.p.	Extension hose 1m	29 01 307		Optional extra
n.p.	Seal \varnothing 24 x \varnothing 16 x 3	80002241		Optional extra
12	Dirt trap cpl.	80002153		Incl. item 12.1 – 12.3
12.1	Seal \varnothing 24 x \varnothing 16 x 3	80002241	2	
12.2	Double nipple	80002167		
12.3	Dirt strainer	80002728		
13	RC element; 0,15 μ F; 3,3k Ω	31 13 114		only with AquaMatik; connect
14	Tab connector	31 12 018	2	parallel to item 6



GS 29

Water supply – Tundish (only UK model)

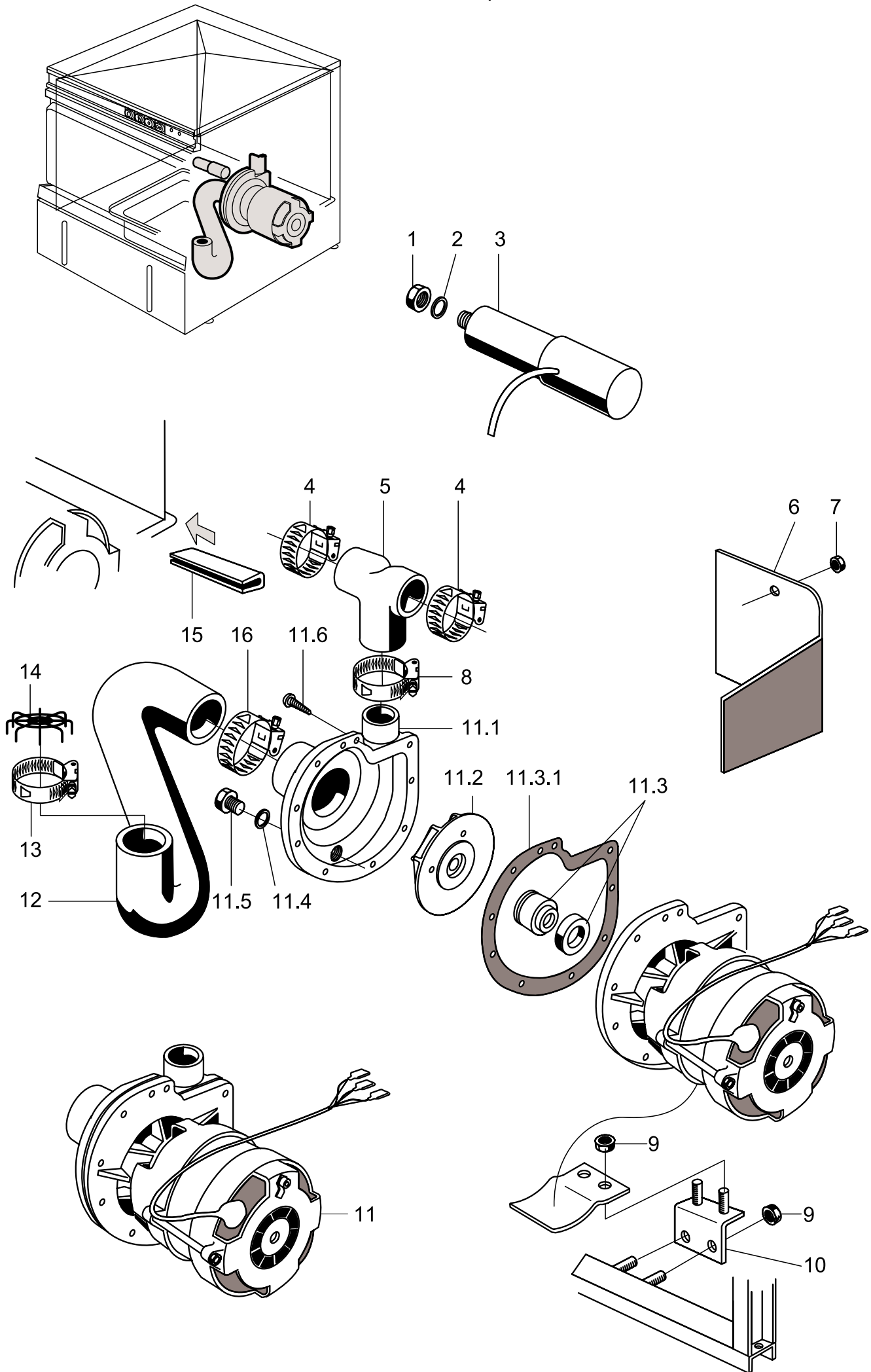
Item	Designation	Part no.	Pc.	Notes
1	Hex nut G 3/4" x 18; SW 32	30 09 502		
2	Seal ø 36 x ø 26 x 2,0	27 01 003		
3	Overflow G 3/4" x 52 x 80	62001810		
4	Hose clip ø 24 – ø 44	28 02 309		
5	Overflow hose DN 25 x 4 x 130 x 220	60002446		
6	Intermediate container	60002542		
7	Pipe elbow ø 12 x ø 14 x 2,0	60002507		
8	Washer ø 5,3 x ø 10 x 1,0	22 01 300		
9	Hex nut M 5, self-securing	21 05 302		
10	Hose clip ø 14 – ø 24	28 02 108		
11	Synthetic hose DN 12,7 x 3,4 x 1200	29 01 521		Per metre
12	Shaped hose DN 12,5 x 4,0	62002565		Adapt
13	Solenoid valve 220/240V; 50/60HZ	31 06 174		flow controller 5l
13.1	Dirt trap	31 06 186		
14	Solenoid valve support	62001891		
15	Washer ø 5,3 x ø 10 x 10	22 01 300		
16	Hex nut M 5, self-securing	21 05 302		
17	Pan-head screw M 4 x 8	20 10 309		
18	Metal hose ø 12 x 1500; G 3/4"	29 01 305		Incl. item 18.1
18.1	Seal ø 24 x ø 16 x 3	80002241		
19	Dirt trap cpl.	80002153		Incl. item 19.1 – 19.3
19.1	Seal ø 24 x ø 16 x 3	80002241		
19.2	Double nipple G 3/4"	80002167		
19.3	Dirt strainer	80002728		
20	RC element; 0,15µF; 3,3kΩ	31 13 114		connect parallel to item 13
21	Tab connector	31 12 018	2	

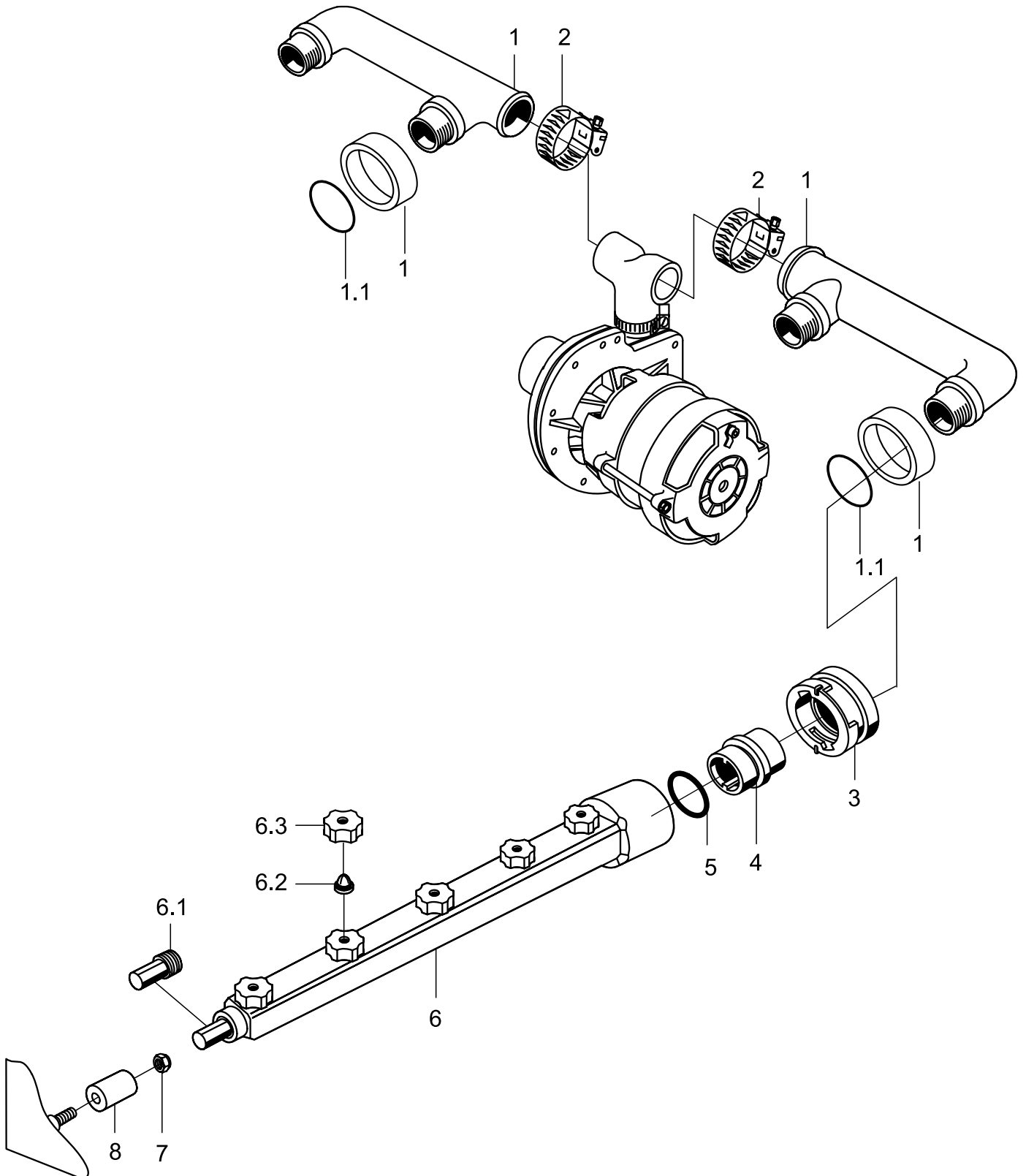
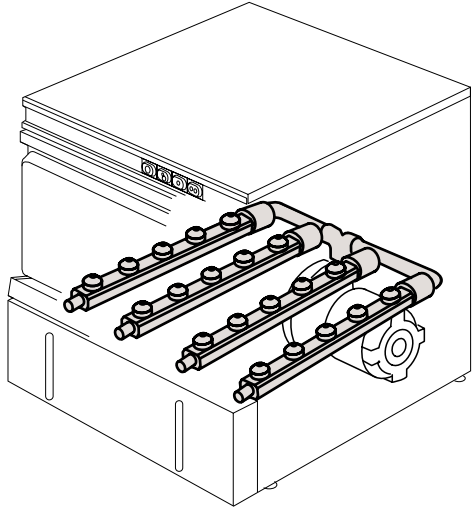


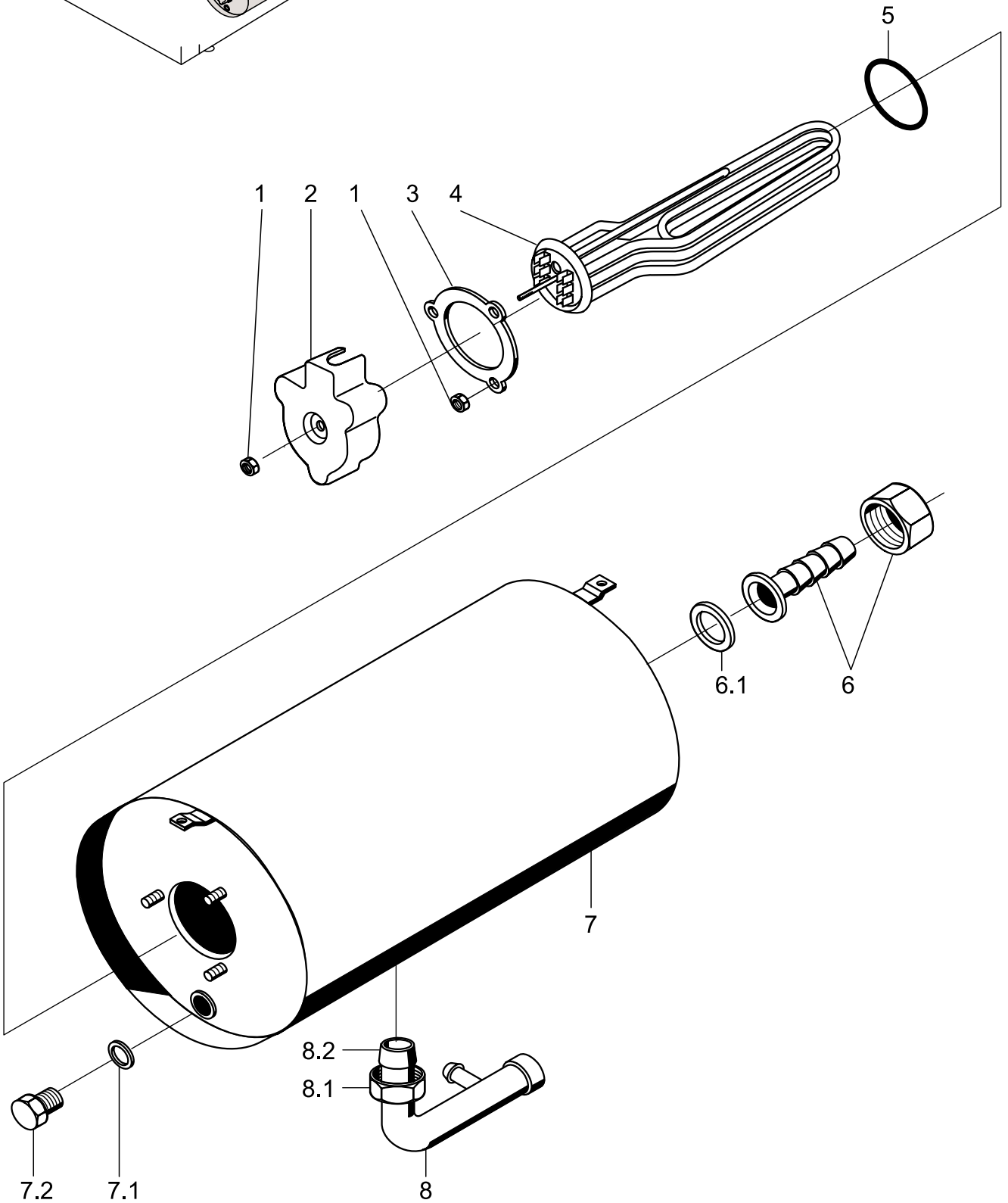
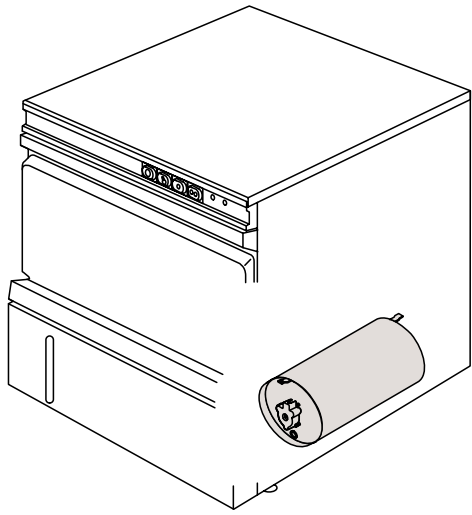
GS 29

Water drain and tank heating

Item	Designation	Part no.	Pc.	Notes
1	Stand pipe overflow height 130 mm	62002648		
2	Surface strainer central piece 300 x 127	62001882		
3	Surface strainer 300 x 110	62001943	2	
4	Mediamat drain	35 01 080		
5	Hose clip \varnothing 32 - \varnothing 52	28 02 110		
6	Siphon \varnothing 38 x 4	62001413		
n.p.	Outlet fittings cpl.	62001942		Consist. of pos. 4, 5, 6
7	Adapter for drain \varnothing 50 x 4,6 x100	62001497		
8	Seal D44 x 40	27 01 027		
9	Hex nut M 5 self-securing	21 05 302		
10	Washer \varnothing 5,3 x \varnothing 10 x 1,0	22 01 300		
11	Stand pipe bottom part	62001805		
12	Seal 2,0 x \varnothing 83,5 x \varnothing 52	62001749		
13	O-ring 6 x \varnothing 46	27 07 015		
14	Heating element cranked 5 kW, 230/400V	31 03 089		
n.p.	Heating element cranked 5 kW, 240/420 V	31 03 094		
	Heating element cranked 5 kW, 200/346V	31 03 103		
15	Link wire	31 23 088	2	
16	Clamping plate	01 17 003		
17	Cap for heating element	31 03 014		
18	Hex nut M 5	21 01 303		
19	Safety thermostat 140°C – 10 K „OUT“	31 25 030		
n.p.	Drain hose \varnothing 50/58 x 4 x 430	40 03 044		Drain left hand



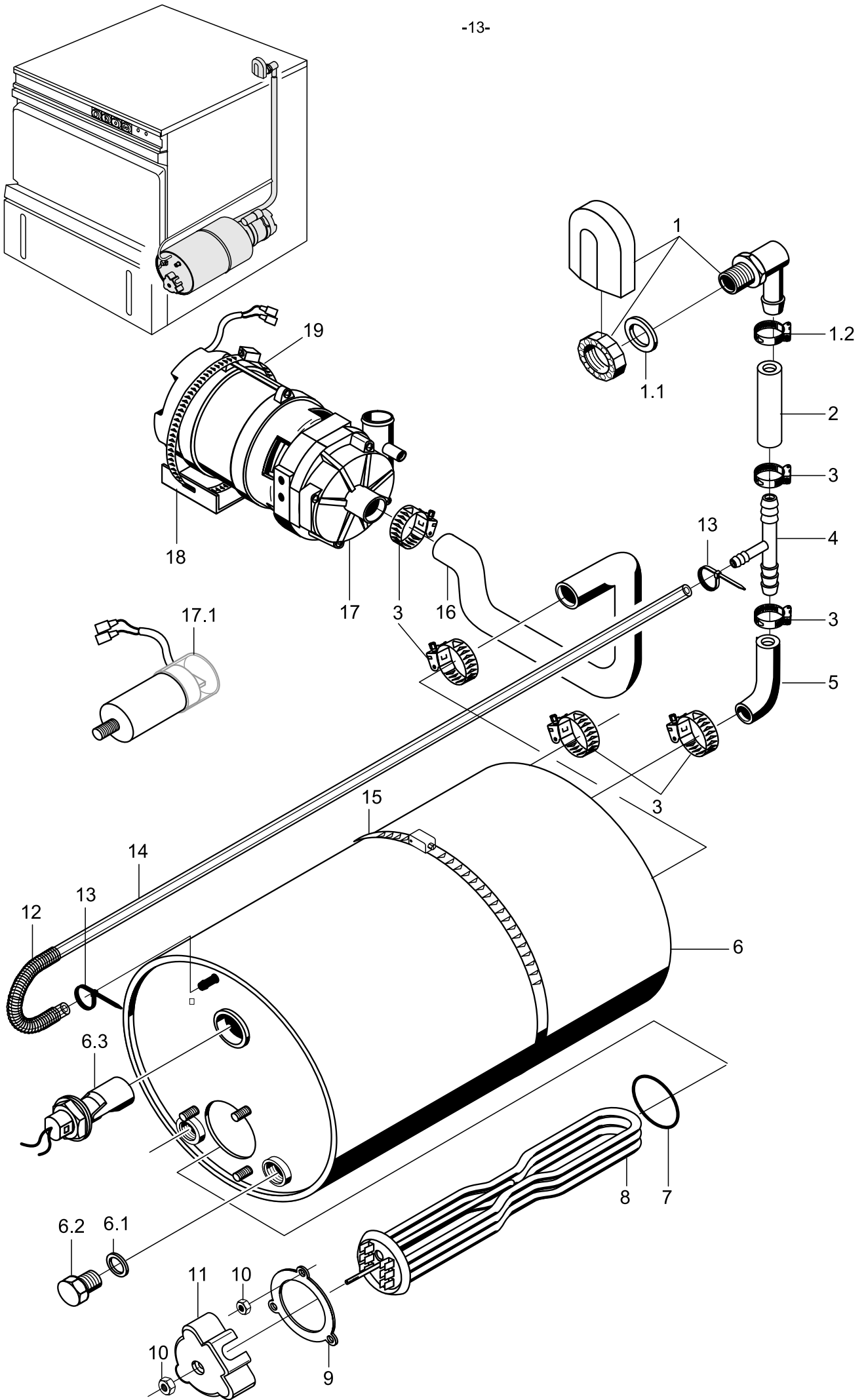




GS 29

Rinsing I (pressurised boiler)

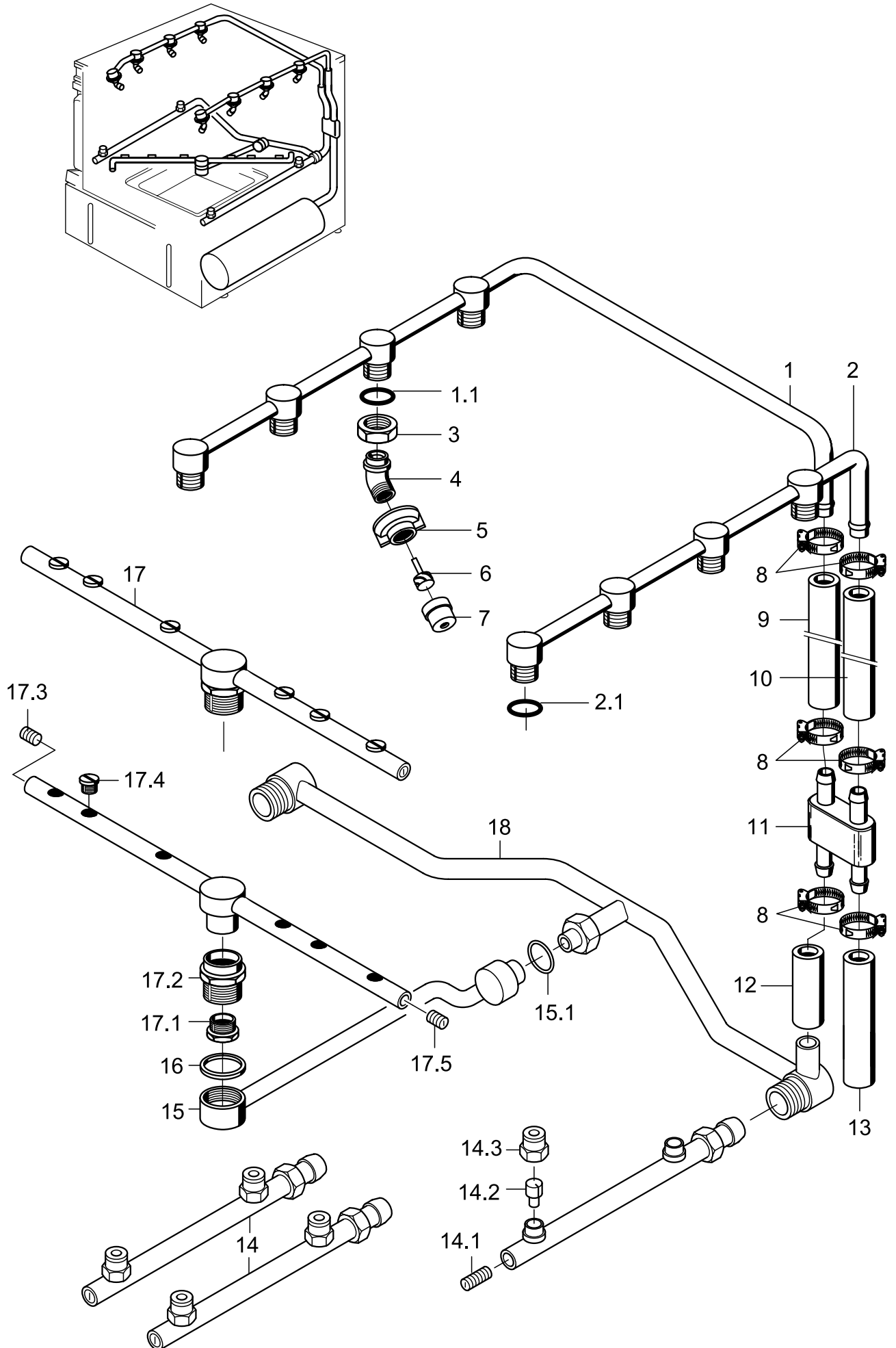
Item	Designation	Part no.	Pc.	Notes
1	Hex nut M 5	21 01 203		
2	Element cover	31 03 014		
3	Clamping plate	01 17 003		
4	Heating element 5,0 kW; 230/400V	31 03 030		
	Heating element 5,0 kW; 240/420V	31 03 032		
	Heating element 5,0 kW; 200/346V	31 03 098		
5	O-ring ø 46 x 6	27 07 015		
6	Hose connection piece BSP 3/4" x 1/2"	60002453		Inc. item 6.1
6.1	Seal ø 23,5 x ø 14 x 2	27 01 028		
7	Boiler cpl.	55 12 033		Inc. item 7.1, 7.2
n.p.	Boiler	60001955		For 2 thermostats
7.1	Seal ø 18 x ø 10 x 1,5	27 03 003		
7.2	Hexagon screw M 10 x 16	20 01 352		
8	Boiler inlet elbow	55 09 055		Incl. item 8.1, 8.2
8.1	Coupling nut	29 07 201		
8.2	Cutting ring	29 07 300		



GS 29

Rinsing I (AquaMatik)

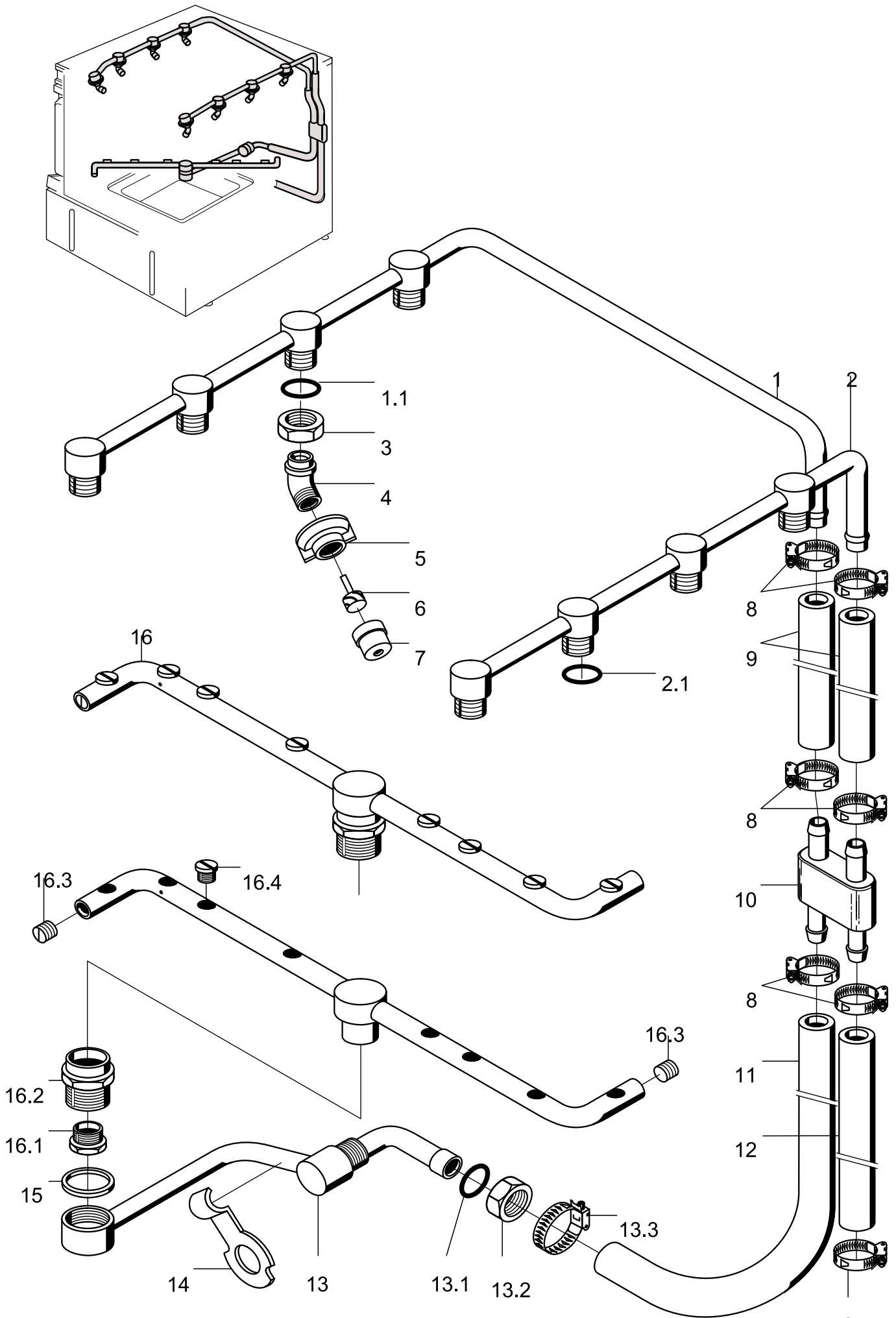
Item	Designation	Part no.	Pc.	Notes
1	Set tank inlet	60002686		Incl. item 1.1, 1.2
1.1	Seal \varnothing 20.5 x \varnothing 28.5 x 2.0	27 01 002		
1.2	Hose clip \varnothing 20 - \varnothing 30	28 02 109		
2	Hose \varnothing 13.5 x 3.5 x 700	40 02 002		Per metre
3	Hose clip \varnothing 20 - \varnothing 30	28 02 109		
4	T-piece; \varnothing 6,6 x \varnothing 14 x \varnothing 14	35 01 086		
5	Hose \varnothing 13.5 x 3.5 x 300	40 02 002		Per metre
6	Boiler, non-pressurised	60002914		since 11/98 round (up to 10/98 angular); incl. boiler vent installation kit 5528257
	Boiler, non-pressurised (for 2 thermostates)	60002685		
6.1	Seal \varnothing 18 x \varnothing 10 x 1,5	27 03 003		
6.2	Hex-head screw M 10 x 16	20 01 352		
6.3	Float switch 250V; 15VA	55 28 255		
n.P.	Seal for float switch	31 26 036		
7	O-ring \varnothing 46 x 6	27 07 015		
8	Heating element 5,0 kW; 230/400V	31 03 030		
	Heating element 5,0 kW; 240/420V	31 03 032		
	Heating element cranked 3 x 200/346V; 5,0 kW	31 03 098		
n.p.	Star bridge	31 23 088		
9	Clamping plate, galvanised	01 17 003		
10	Hex nut M 5	21 01 203		
11	Cap for heating element	31 03 014		
12	Spring	62002419		
13	Cable binder; 200 x 4,7	31 20 015		
14	Hose DN 5 x 1.5 x 700	40 01 024		
15	Hose clip \varnothing 182 - \varnothing 202 x 12	28 02 121		
16	Shaped hose DN25 x 3,5	62002373		
17	Pump 0.27 kW; 1 x 220-240V; 50Hz	31 02 477		Incl. item 17.1
	Pump 0.27 kW; 1 x 220-240V; 60Hz	31 02 445		
	Pump 0.27 kW; 1 x 180-200V; 50Hz	31 02 446		
	Pump 0.27 kW; 1 x 180-200V; 60Hz	31 02 447		
17.1	Capacitor 5 μ F; 250V; 50/60 Hz	31 13 099		
18	Pump support	62001976		Up to mach.no.: 345 471
	Pump support	62002551		From mach.no.: 345 472
19	Hose clip \varnothing 92 - \varnothing 112 x 12	28 02 125		



GS 29

Rinsing II (...223 460)

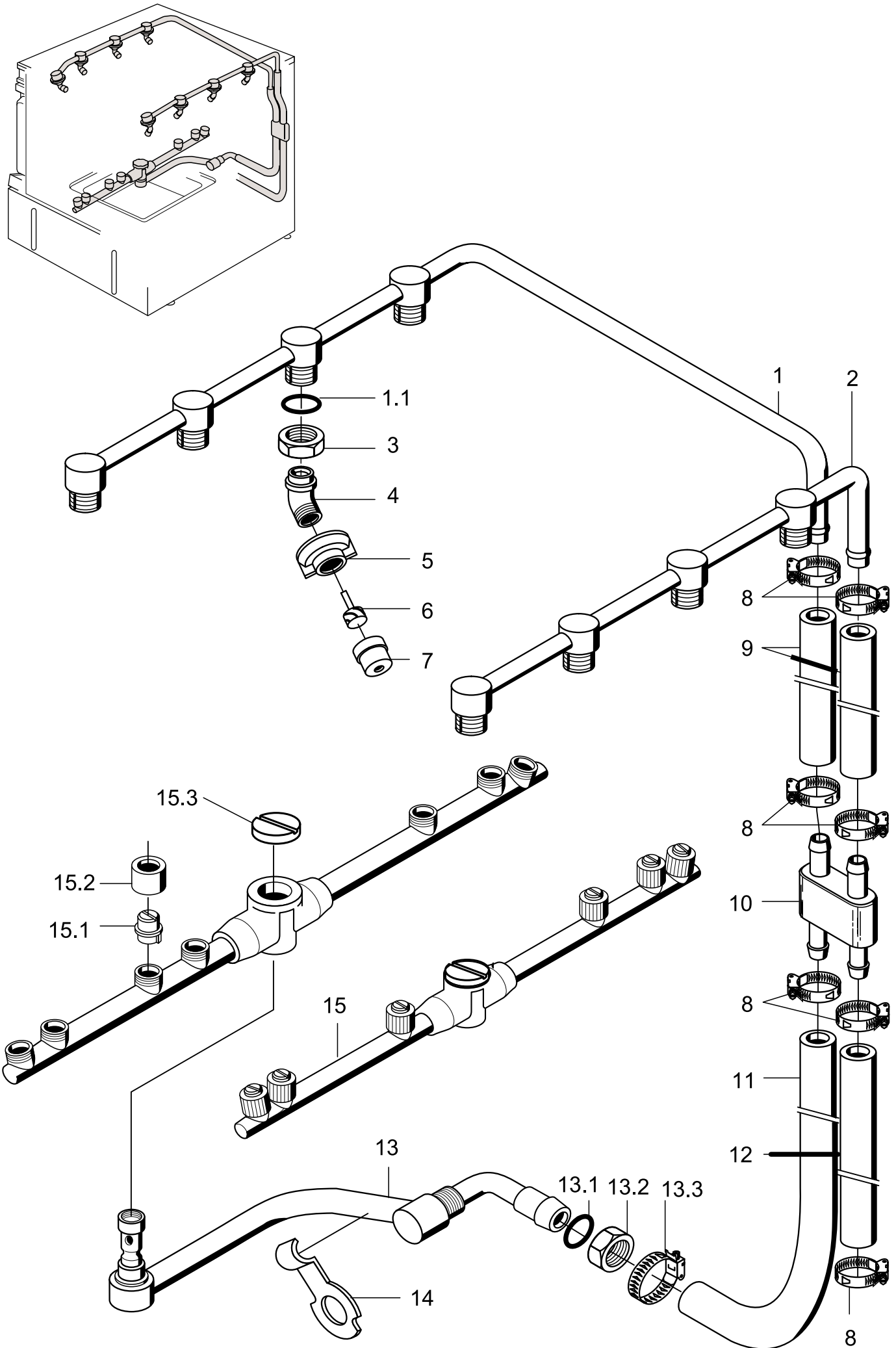
Item	Designation	Part no.	Pc.	Notes
1	Top rinse manifold left cpl.	62002842		Incl. O-ring 27 07 001
1.1	Seal ø 24 x ø 17 x 2	62001366	4	Up to mach. no.: 381 854
	O-ring ø 16 x 2,5	27 07 001	4	From mach. no.: 381 855
2	Top rinse manifold right cpl.	62002841		Incl. O-ring 27 07 001
2.1	Seal ø 24 x ø 17 x 2	62001366	4	Up to mach. no.: 381 854
	O-ring ø 16 x 2,5	27 07 001	4	From mach. no.: 381 855
3	Locking nut G 3/8"	30 09 200	8	
4	Rinse jet adapter	62001176	8	
5	Coup nut for jet	62001174	8	
6	Spray jet swirl	65002755	8	
7	Spray jet cap	65002754	8	
8	Hose clip ø 20 - ø 30	28 02 306		
9	Hose ø 13,5 x 3,5 x 150 lg.	40 02 002		Per metre
10	Hose ø 13,5 x 3,5 x 200 lg.	40 02 002		
11	Distributor for rinse manifold	62001391		
12	Hose ø 13,5 x 3,5 x 80 lg.	40 02 002		Per metre
13	Shaped hose ø 13,5 x 4 x 170 lg.	40 03 052		
14	Rinse pipe cpl.	62001899	2	Incl. item 14.1 – 14.3
14.1	Grub screw M 9 x 40	20 30 502		
14.2	Spray jet swirl	65002755	2	
14.3	Spray jet cap	65002754	2	
15	Revolving arm support cpl.	62001906		Incl. item 15.1
15.1	O-Ring 16 x 2,5	27 07 001		
16	Seal ø 34x ø 27 x 2	27 09 025		
17	Revolving arm cpl.	55 10 078		Incl. item 17.1 – 17.5
17.1	Revolving arm screw M 14 x 1	20 19 204		
17.2	Revolving arm socket G 3/4"	35 01 161		
17.3	Grub screw M 11 x 8	29 10 239		
17.4	Fan jet	29 10 312	6	
17.5	Grub screw M 11 x 14	29 10 240		With o-ring
18	Rinse manifold bottom	62001893		

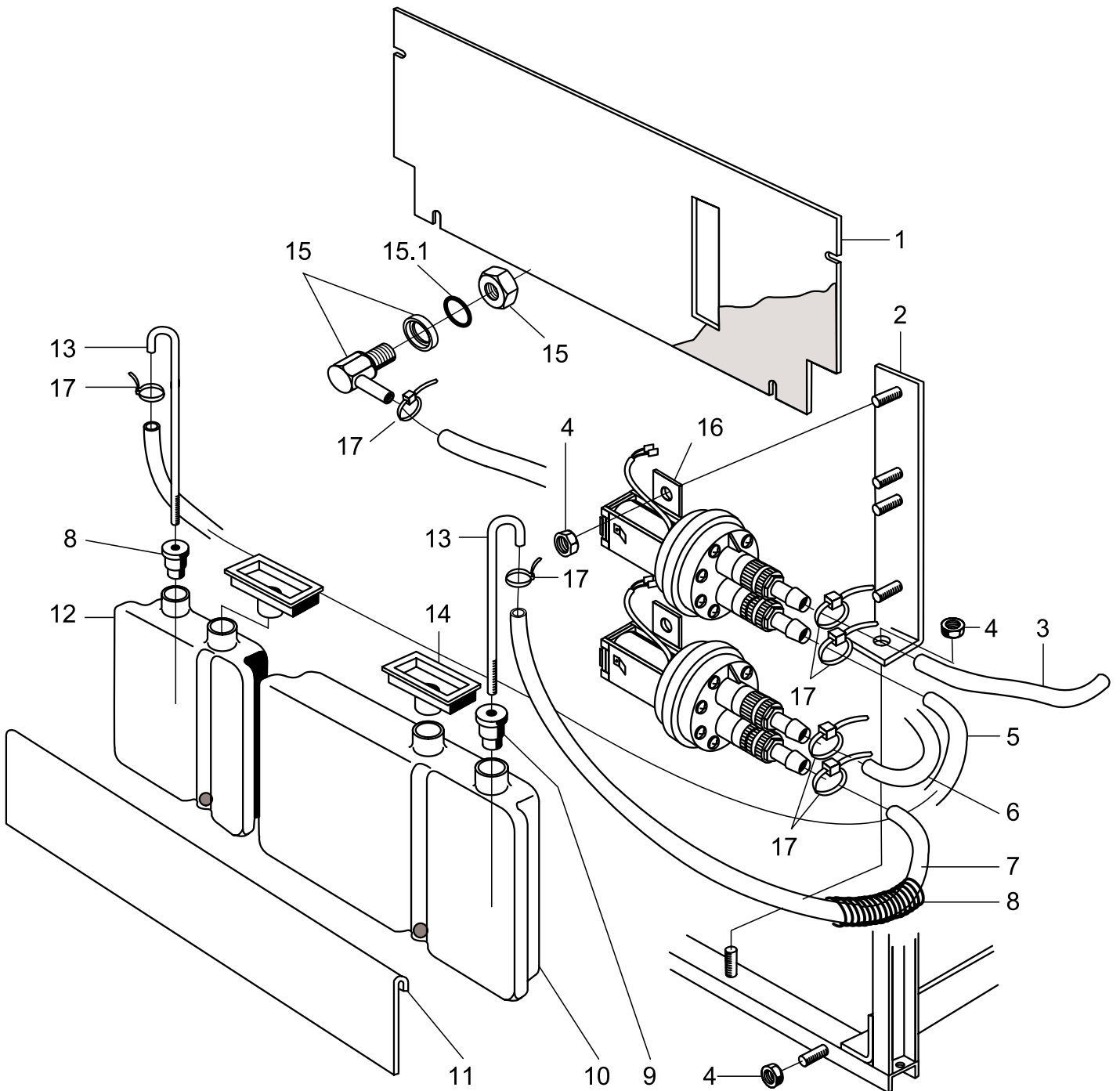
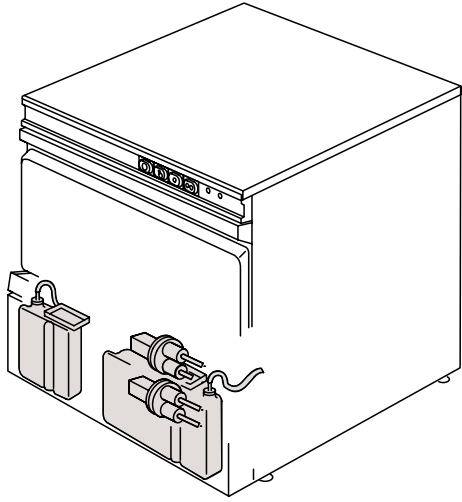


GS 29

Rinsing II (223 461...396 847)

Item	Designation	Part no.	Pc.	Notes
1	Rinse manifold left	62002842		Incl. item 1.1
1.1	Seal \varnothing 17 x \varnothing 24 x 2,0	27 09 009		Up to mach.no.: 381 854
	O-ring \varnothing 16 x 2,5	27 07 001	4	From mach.no.: 381 855
2	Rinse manifold right	62002841		Incl. item 1.1
3	Hex nut G 3/8" x 5.5	30 09 200	8	
4	Rinse jet adapter	62001176	8	
5	Cap nut for jet	62001174	8	
6	Rinse jet swirl	65002755	8	
7	Rinse jet cap	65002754	8	
8	Hose clip \varnothing 20 - \varnothing 30	28 02 306		
9	Hose DN 13.5 x 3.5 x 280	40 02 002	2	Per metre
10	Distributor for rinse manifold	62001391		
11	Shaped hose DN 13.5 x 3.5	62001573		Cut to size
12	Shaped hose DN 13.5 x 3.5	62001573		Cut to size
	Shaped hose DN 25 x DN 13.5 x 3.5	60002145		(AquaMatik)
13	Kit revolving arm support	55 10 114		inkl. revolving arm 62002891
13.1	O-ring \varnothing 16 x 2,5	27 07 001	4	
13.2	Hex nut G 3/8" x 5.5	30 09 200		
13.3	Hose clip \varnothing 20 - \varnothing 30	28 02 306		
14	Support (anti-torsion device)	60002320		Retrofittable
15	Seal \varnothing 34 x \varnothing 27 x 2	27 09 025		
16	Revolving arm cpl.	62001958		Incl. item 16.1 – 16.4
16.1	Revolving arm screw M 14 x 1	20 19 204		
16.2	Revolving arm socket G 3/4" x 24,5	35 01 161		
16.3	Grub screw M 11 x 8	29 10 239	2	
16.4	Fan jet	29 10 312	8	

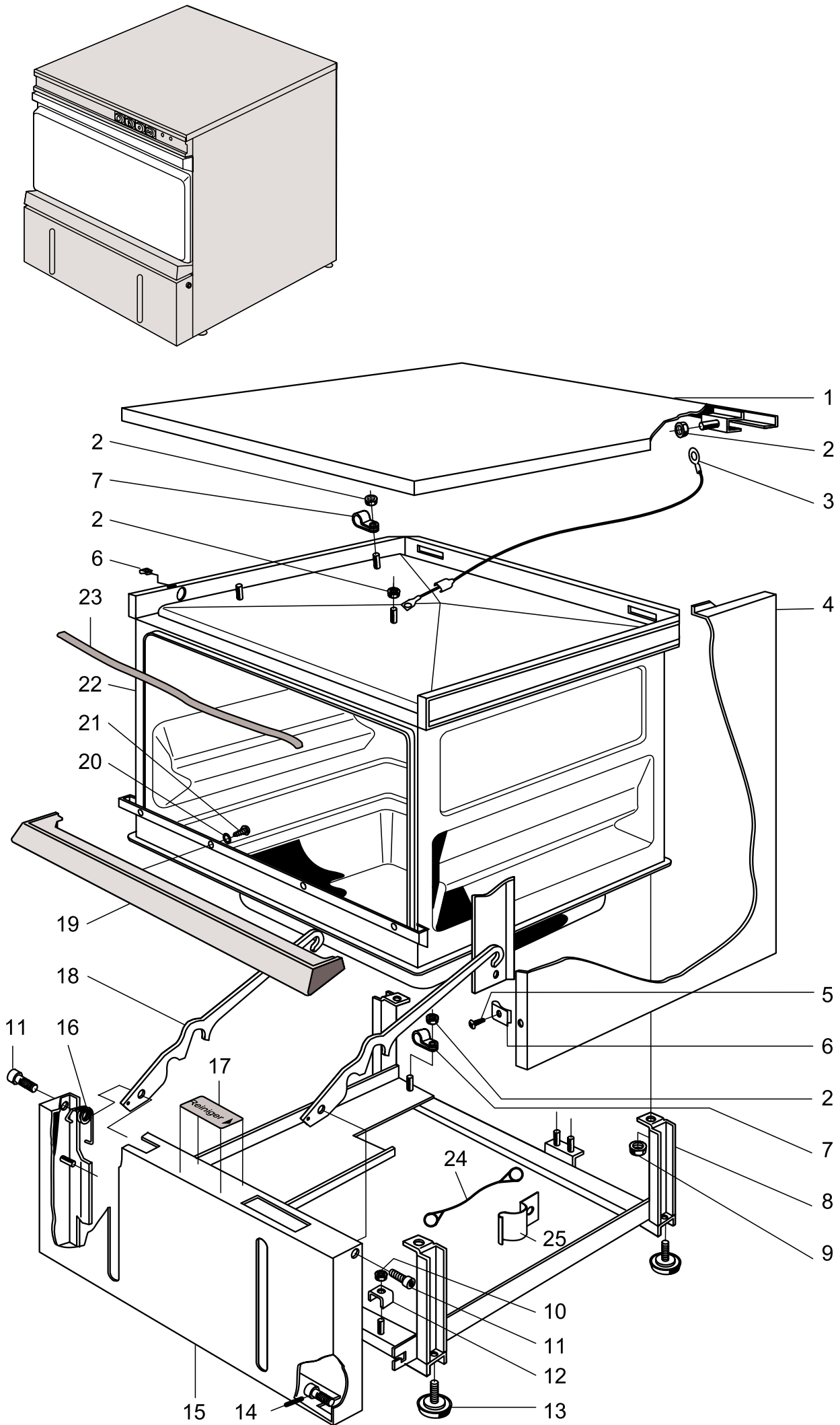




GS 29

Dosing

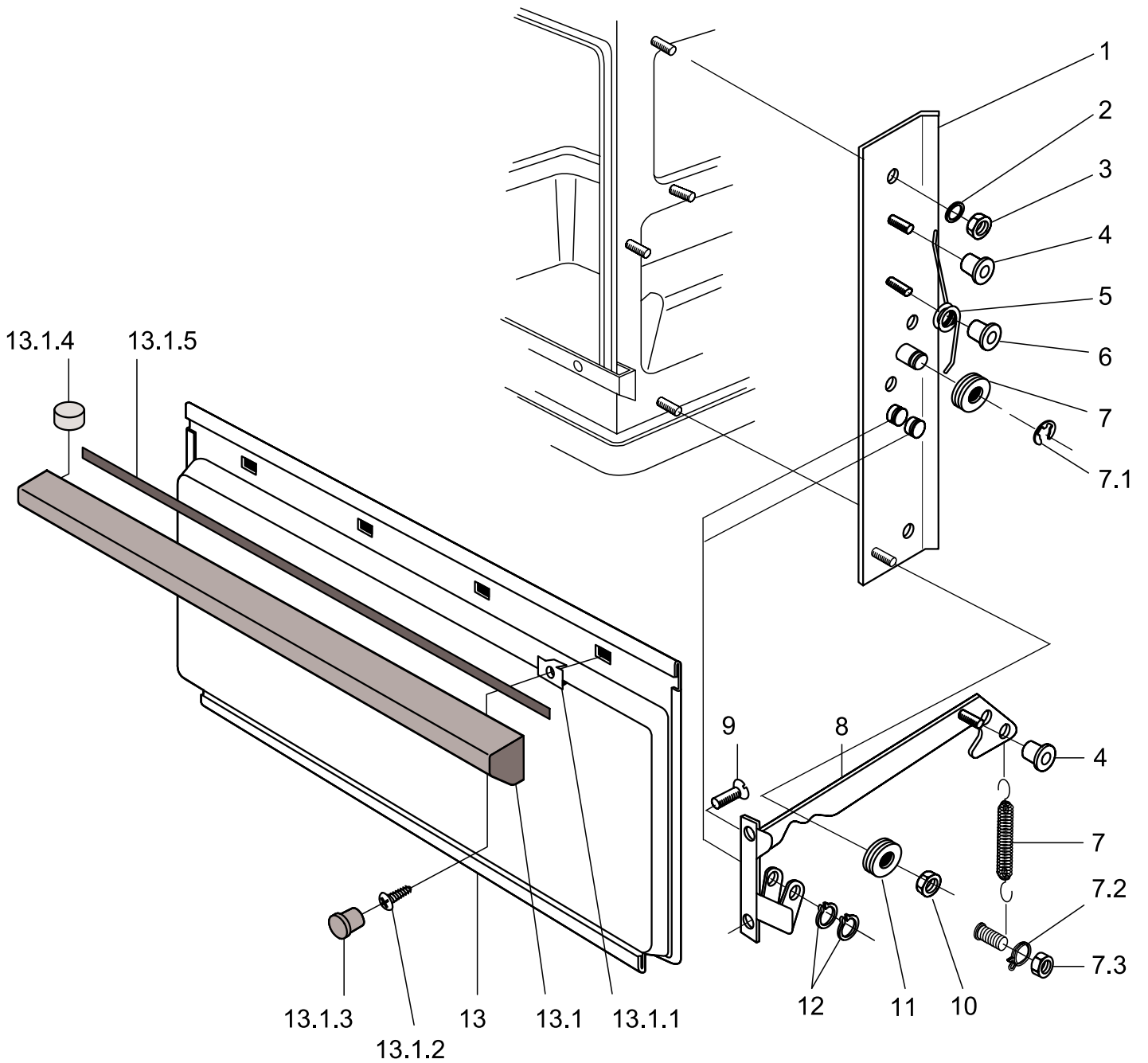
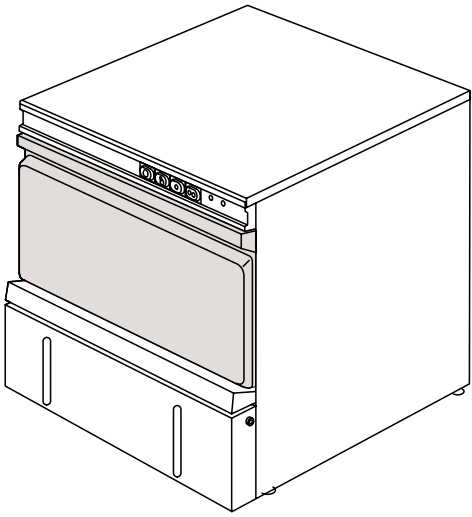
Item	Designation	Part no.	Pc.	Notes
1	Shock hazard protection	62001930		
2	Dispenser holder	62001856		
3	Hose DN5 x 1,5 x 330 lg.	40 01 024		For detergent, per metre
4	Hex nut M 5	21 05 302		Self-securing
5	Hose DN5 x 1,5 x 1100 lg.	40 01 024		Per metre
6	Hose DN5 x 1,5 x 470 lg.	40 01 024		For rinse aid, per metre
7	Hose DN5 x 1,5 x 340 lg.	40 01 024		Per metre
8	Spring 0,8 x 10 x 280	62002419	4	
9	Gauge plug	40 06 011	2	
10	Detergent container cpl.	62001292		With indicator
11	Plate for detergent flap	62001864		
12	Clear rinse container cpl.	62001304		With indicator
13	Suction tube	62001301	2	
14	Filling pocket	62001331	2	
15	Set dispensing nipple for detergent	62002869		Incl. item 15.1
15.1	O-ring \varnothing 10 x 2,5	27 07 030		
	Seal \varnothing 18 x \varnothing 10 x 1,5			Replaced by item 15
16	Dispenser ELT 10 GS cpl. right	80000555	2	See separate spare parts list
17	Cable binder	31 20 015		For 40 01 024

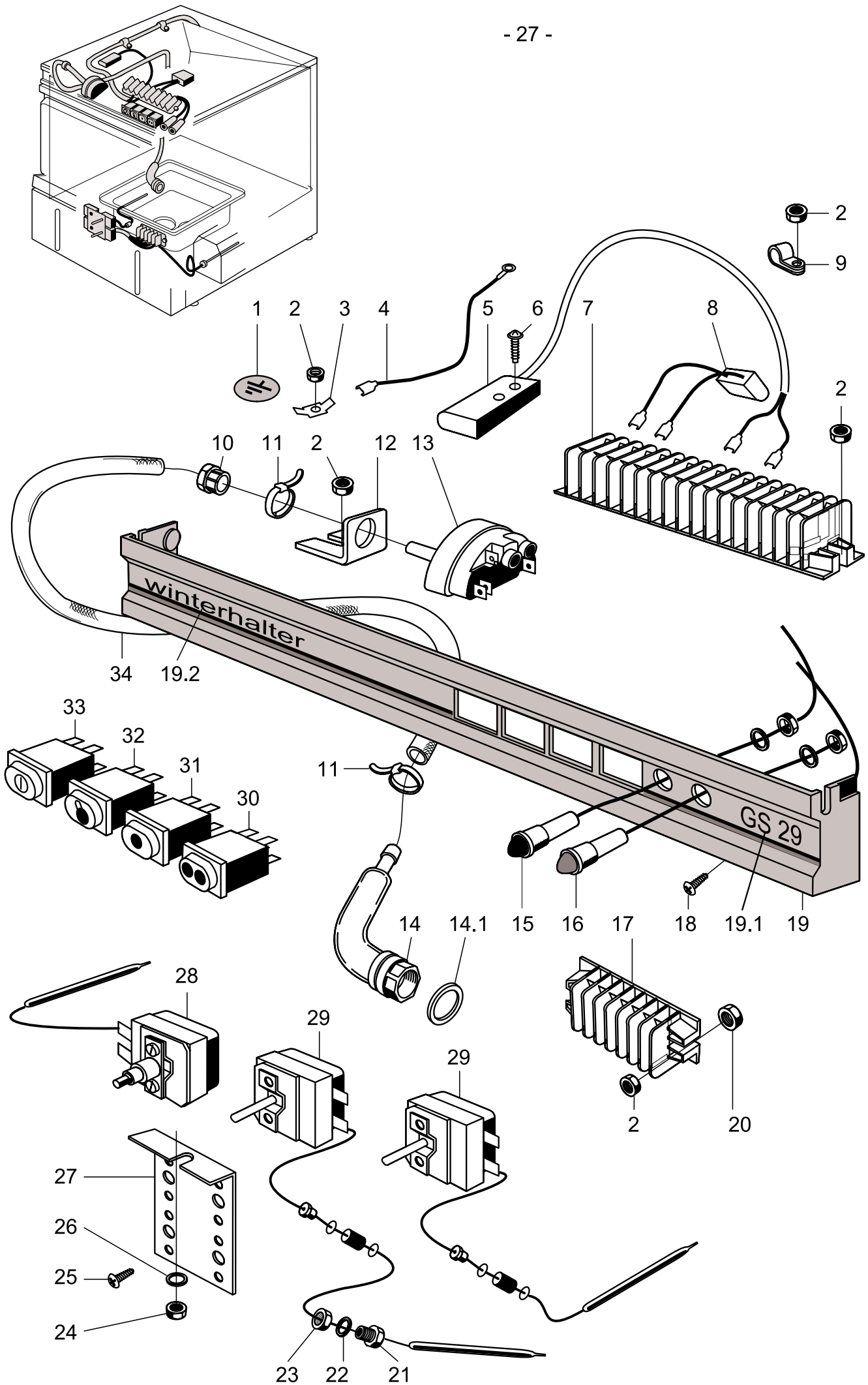


GS 29

Panel, container, base frame

Item	Designation	Part no.	Pc.	Notes
1	Cover plate cpl.	62001888		
2	Hex nut M 4	21 05 300		Self-securing
3	Wire assortment control panel	62001916		
4	Panel right	62002126		
n.p.	Panel left	62002124		
n.p.	Panel rear	62002128		
5	Countersunk head screw B 3,9 x 13	20 21 302		
6	Sheet-metal nut B 3,9	21 17 300		
7	Cable binder	31 20 008		
8	Supporting frame	62001846		
	Supporting frame	62002405		Japan
9	Hex nut M 5	21 05 302		Self-securing
10	Hex nut M6	21 05 304		Self-securing
11	Bearing bolt for locking bar	62001461	2	Until mach. no.: 334 999
12	Clamp strap	31 09 095		
13	Adjusting foot M 8 x 60	62001973	4	
n.p.	Base plate	60002023		
14	Pan head screw M 5 x 20	20 10 325		As from mach. no.: 335 000
15	Front panel	62001860		
16	Locking bar spring	62002187	2	Until mach. no.: 334 999
17	Filling instructions plate	62001382		Detergent and rinse aid
18	Locking bar for detergent flap		2	Replaced by item 24, 25
19	Panel for trough	62001802		
20	Seal M 4	22 08 502		
21	Lens head screw M 4 x 8	20 10 310		
22	Housing cpl.	62002006		
23	Door seal 10 x 4 x 550 (per metre)	62001618		Until mach. no.: 359 665
	Door seal frame (adapt)	60002704		As from mach. no.: 359 666
24	Stabilizer	28 06 007		As from mach. no.: 335 000
25	Locking spring	62002187	2	As from mach. no.: 335 000
n.p.	Machine panel 1-part	62001886		
n.p.	Cover for installation opening	62001404		Until mach. no.: 334 999
n.p.	Edge protection	62001437		Until mach. no.: 334 999

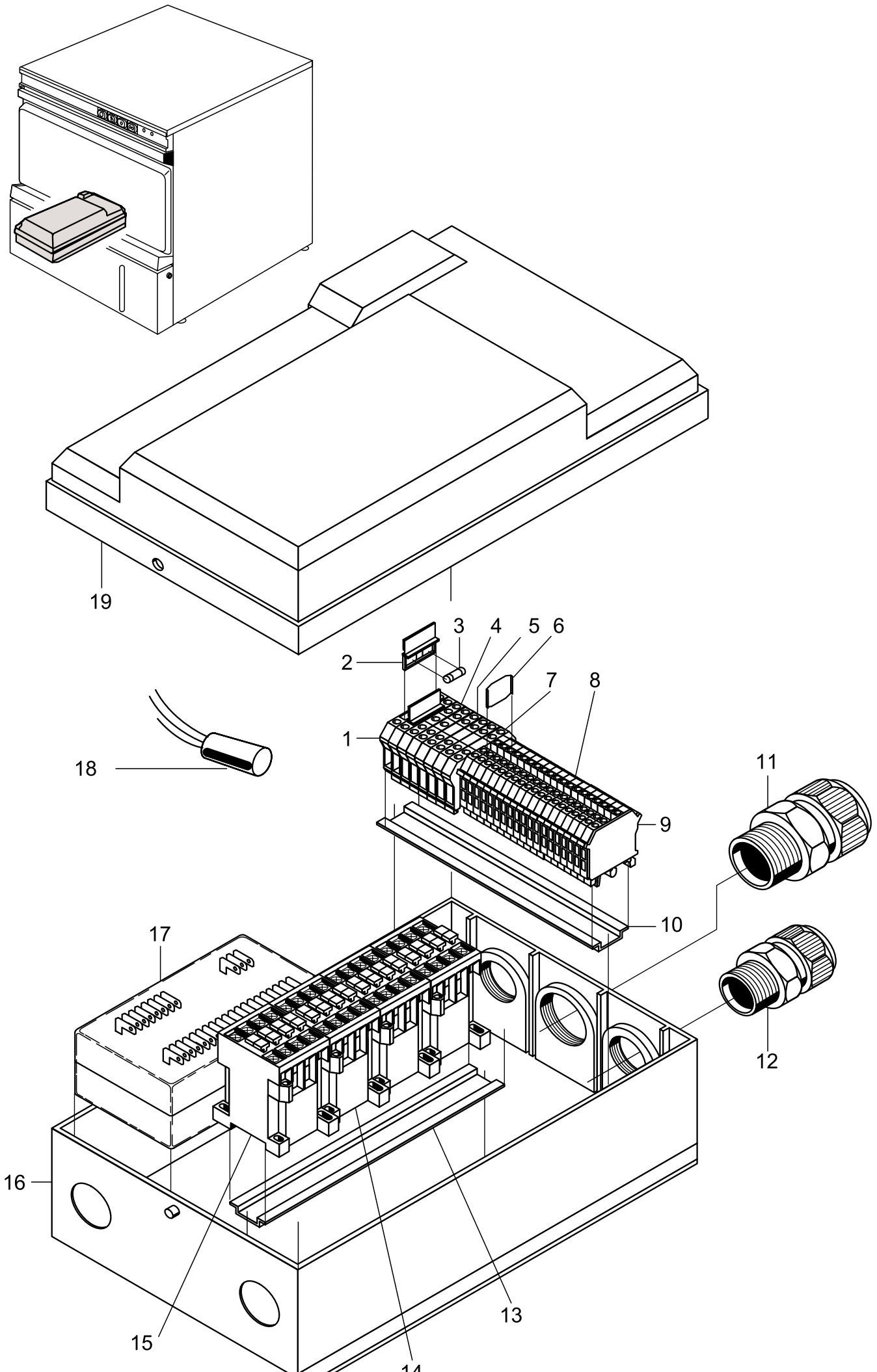




GS 29

Electrical parts I

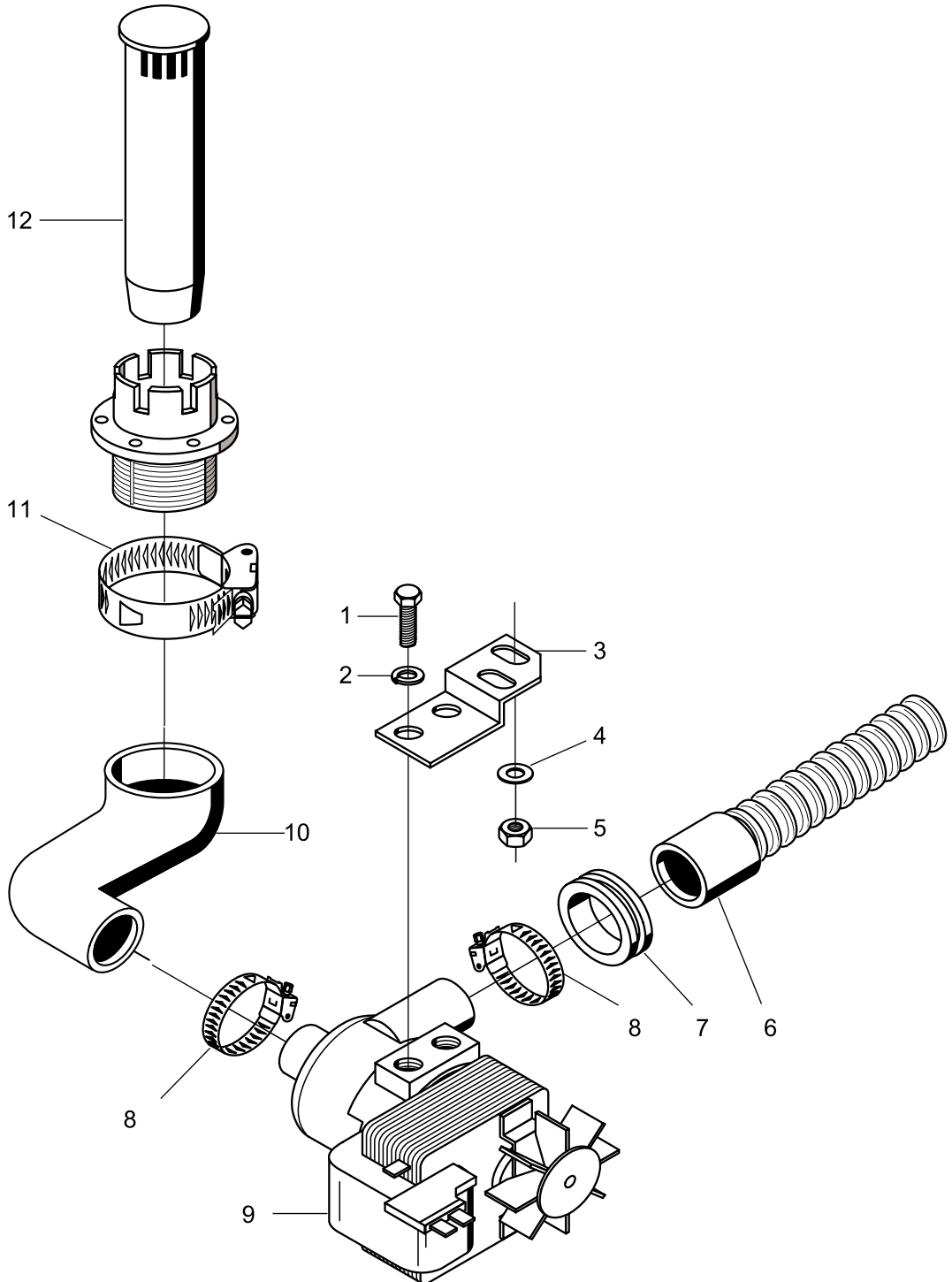
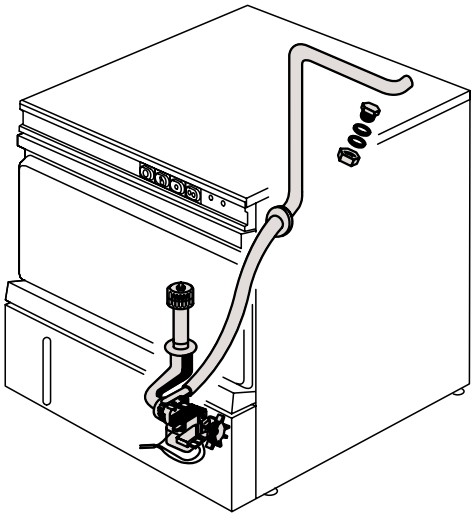
Item	Designation	Part no.	Pc.	Notes
1	Earth symbol green/yellow	31 09 096		
2	Hex nut M 4	21 05 300		Self-securing
3	Flat plug	31 12 003		
4	Wire assortment switch panel	62001916		
5	Magnetic switch 180 - 265V; 50/60 Hz	31 24 221		
6	PT screw KB 50 x 10	20 17 304		
7	Terminal strip	31 09 154		16 part
8	RC-member 0,27 µF; 250 V 50 Hz	61002141		
9	Fixing clip ø 11	31 10 125		
10	Catch leading-in	31 10 069		
11	Cable binder 200 x 4,7	31 20 015		
12	Level switch support	62001350		
13	Level switch 85 / 55 ± 5	31 26 029		Violet blue
14	Air chamber cpl.	55 04 024		incl. item 14.1
14.1	O-Ring 24 x 3	27 07 026		
	Seal ø 26 x ø 36 x 2			Replaced by 55 01 024
15	LED red 12 V	31 08 111		
16	LED yellow 12 V	31 08 112		
17	Terminal strip	31 09 155		9 part
18	Countersunk screw M 4 x 6	20 12 302		
19	Switch panel	55 19 078		Incl. item 19.1, 19.2
19.1	Strip label GS 29	62001867		
19.2	Type strip WINTERHALTER	62001866		
20	Round nut without slot M5	21 03 001		
21	Gland for thermostat M 14 x 1	31 25 001		
22	Seal ø 20 x ø 14,2 x 2	27 09 036		
23	Hex nut M 14 x 1	31 25 002		
24	Hex nut M 5	21 05 302		
25	Lens head screw M 4 x 8	20 10 310		
26	Washer ø 5,3 x ø 12 x 0,8	22 02 213		
27	Thermostat support	62001859		
28	Safety thermostat 140°C – 10 K „AUS“	31 25 030	2	
29	Thermostat 1750 lg.	31 25 013	2	
30	Pressure key white 250 V	31 24 130		PROGRAMME II
31	Pressure key white 250 V	31 24 153		PROGRAMME I
32	Lampe white with reset resistance 230 V	31 08 116		HEATING
33	Pressure switch "W" green 250 V	31 24 185		ON-OFF
34	Hose ø 5 x 1,5 x 1200	40 01 024		Per metre



GS 29

Electrical parts II

Item	Designation	Part no.	Pc.	Notes
1	Universal fuse terminal UK-Si	31 09 063	2	
2	Two-pin fuse	31 09 072	2	
3	Fuse 250V; 6,3A	31 11 043	2	
4	Double terminal UDK 4 - PE	31 09 153	2	
5	Double terminal UDK 4 - blue	31 09 152		
6	Isolating disk	31 09 066		
7	Double terminal UDK 4 - grey	31 09 151	3	
8	Twin terminal UK 5 - twin	31 09 115	19	
9	Cover	31 09 177		
n.p.	Fixed bridge; 2-pin; FB 2-6	31 09 126		
10	Snap-on rail 172mm long	60001733		
11	Cable gland PG 29	31 10 123	2	
12	Cable gland PG 21	31 10 070		
13	Snap-on rail 250mm long	62001917		
14	Contactora 220-255 V; 50/60 Hz; A16	31 04 162	3	
	Contactora 200V; 50/60 Hz; A16	31 04 163	4	Japan
15	Contactora 220-255V; 50/60Hz; A9	31 04 161		
16	Relay box, bottom part	60001720		
17	Electronic programme switch EPS 1.1; 230V	31 05 131		
	Electronic programme switch EPS 1.1; 200V; 240V	31 05 132		
18	Radio interference suppression capacitor	31 13 077		
19	Relay box cover	62001659		
n.p.	Clock generator	31 04 152		Pulse-controlled filling
n.p.	Wire assortment pulse-controlled filling	60002519		Pulse-controlled filling
n.p.	Passing make contact relay 176-264V; 50/60Hz	31 04 150		Tank dosing time limited
n.p.	Wire assortment	62002646		Tank dosing time limited
n.p.	Set pulse-controlled filling	80002133		



GS 29

Drain pump (option)

Item	Designation	Part no.	Pc.	Notes
1	Hex-head screw M 6 x 16	20 01 306		
2	Lock washer B 6	23 03 300		
3	Bracket for drain pump	62002803		
4	Washer \varnothing 5.3	22 01 300		
5	Hex nut M 5	21 05 302		Self-securing
6	Spiral hose \varnothing 18,5 x 1500	40 01 039		
7	Rubber bushing \varnothing 35 x \varnothing 60 x 10	40 07 014		
8	Hose clip \varnothing 24 - \varnothing 36	28 02 111		
9	Drain pump 240 V 50 Hz	31 02 010		
10	Hose elbow for drain pump	62002804		
11	Hose clip \varnothing 32 - \varnothing 52	28 02 110		
12	Standpipe	62002768		
n.p.	Cable for drain pump	62001929		
n.p.	Installation drain pump	55 28 159		