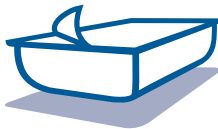


Spare parts catalogue



MULTIVAC

Machine model: C200

Machine number:

26.05.2009 DEC|000000000000000105633992|EN| -

Language: English

This instruction manual belongs to

-
- the machine

See documentation for spare parts catalogue

Manufacturer of the machine:

MULTIVAC
Sepp Hagenmüller GmbH & Co. KG
D-87787 Wolfertschwenden
www.multivac.com
Tel.: (08334) 601 - 0
Fax: (08334) 601 - 199
Email: muwo@multivac.de

Service address:

Contents

1 chamber machine	1
1.1 housing	3
1.1.1 lock	5
1.2 bottom section	7
1.2.1 valve	11
1.2.2 housing	13
1.2.3 lid	15
1.2.4 sealing bar	17
1.3 lid	21
1.3.1 lid	23
1.3.2 hinge	25
1.3.3 hinge	27
1.4 vacuum pump	29
1.5 type plate	31
1.6 pneumatics	33
1.7 switchboard	35
1.8 electrical system	37
1.9 accessories	39
1.9.1 repair kit	41

Stückliste ohne Zeichnung

Parts list without drawing

Liste des pièces sans illustration

Lista de piezas sin ilustración

DE 101835620 001 -



MULTIVAC

Pos.	Material	Document	Version	Description	Standard specifications	Quantity	Unit	SPI
0010	105364751	16000022494	A	housing		1.000	PC	N
0020	105174199	16000030665	E	bottom section		1.000	PC	N
0030	105128864	16000036894	A	lid	KPL KH150 Fenst.-J Wakü-N C200 DNSG/DTSG/EFSG SGL=	1.000	PC	
0040	101779910	101843604	-	vacuum pump		1.000	PC	N
0050	81981101300			type plate		1.000	PC	N
0060	105441609			seal	L1=278 B1=92 H1=3,9	1.000	PC	
0070	81190110122			hose clamp	D12 B 9 ZY ST GAL ZN	1.000	PC	9
0080	101782562	16000010430	-	pneumatics		1.000	PC	N
0090	105382108			switchboard		1.000	PC	N
0100	105415903	101835620	-	electrical system		1.000	PC	N
0110	75028051102			oval head screw	M5 L2=16 ISO 7380 A2	4.000	PC	9
0120	85148201040			cable tie		4.000	PC	N
0130	85148201050			cable tie		2.000	PC	N
0140	105489463	16000030664	-	accessories		1.000	PC	N
0160	105048123			oil bottle	für poly alpha olefins N0	1.000	PC	



MULTIVAC

1 chamber machine C200 Gas-N MC06 230 V 50Hz DTSG SWB3 R5-RB0021 Sta

Document
101835620

Material
105533992

Sheet
1 / 1

Machine type

C200

Serial number

Page

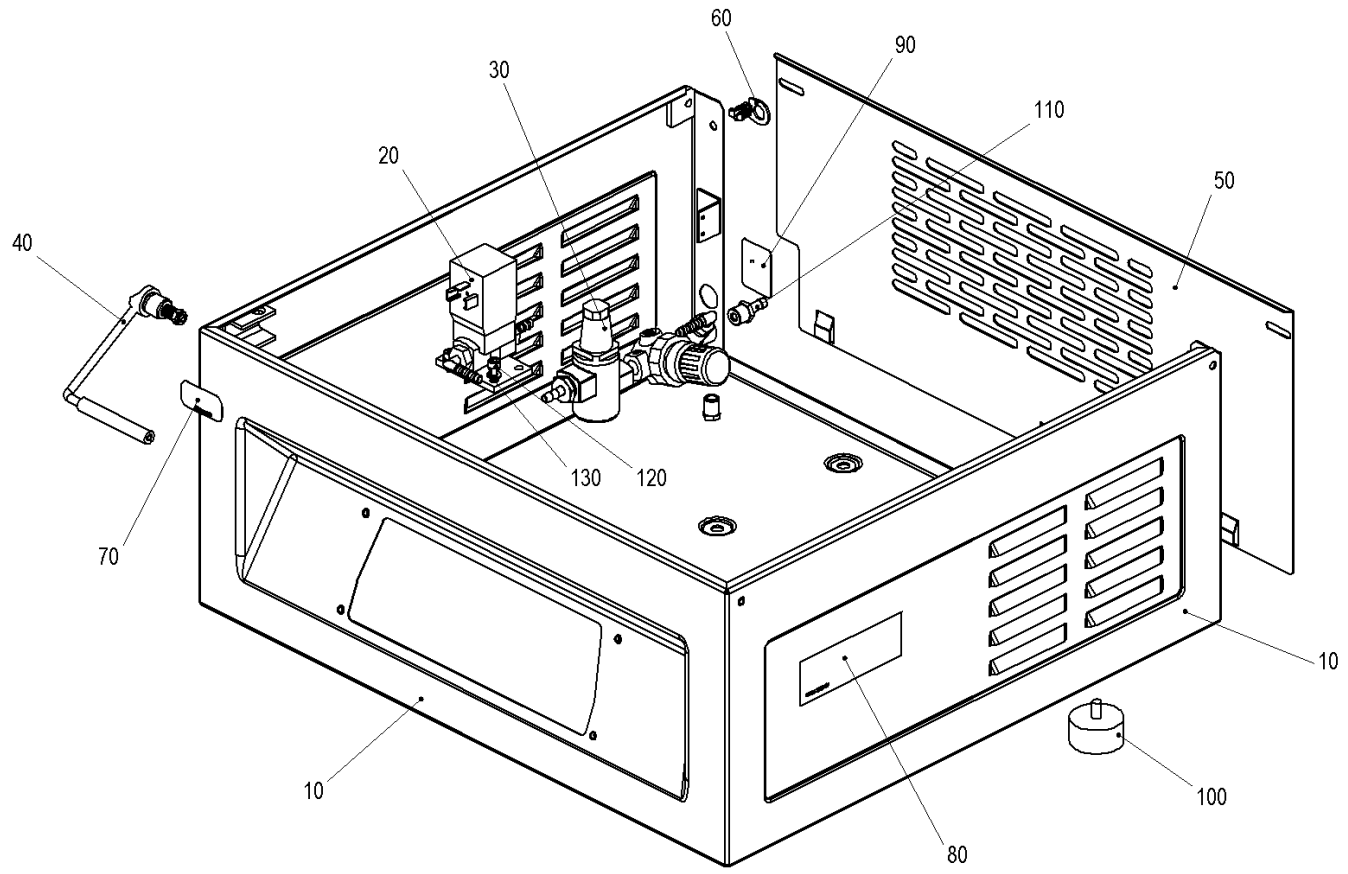
2 / 42

SYMBOLISCHE
DARSTELLUNG

SYMBOLIC
REPRESENTATION

SCHEMA

REPRESENTACION
SIMBOLICA



Document

16000022494

Version Name

a heider

Date Sheet

19.2.2007 1 / 1


16000022494_gehäuse



Gehäuse
housing

boitier
carcasa

Pos.	Material	Document	Version	Description	Standard specifications	Quantity	Unit	SPI
0010	105325454			housing		1.000	PC	N
0040	101758018	101843955	A	lock		1.000	PC	N
0050	11103788950			sheet		1.000	PC	N
0060	81961161000			lock		2.000	PC	N
0070	105106378			GS mark of conformity		1.000	PC	N
0080	105529547			plate		1.000	PC	N
0100	81932112040			rubber metal cushion		4.000	PC	N
0140	85148201110			fixing base		2.000	PC	N
0150	75210071602			thrust washer	D2=16 Niro	1.000	PC	9
0160	75200001602			hexagon nut	M16x2 A2 DIN 934	1.000	PC	9
0170	81981211002			self-adhesive sign		1.000	PC	N

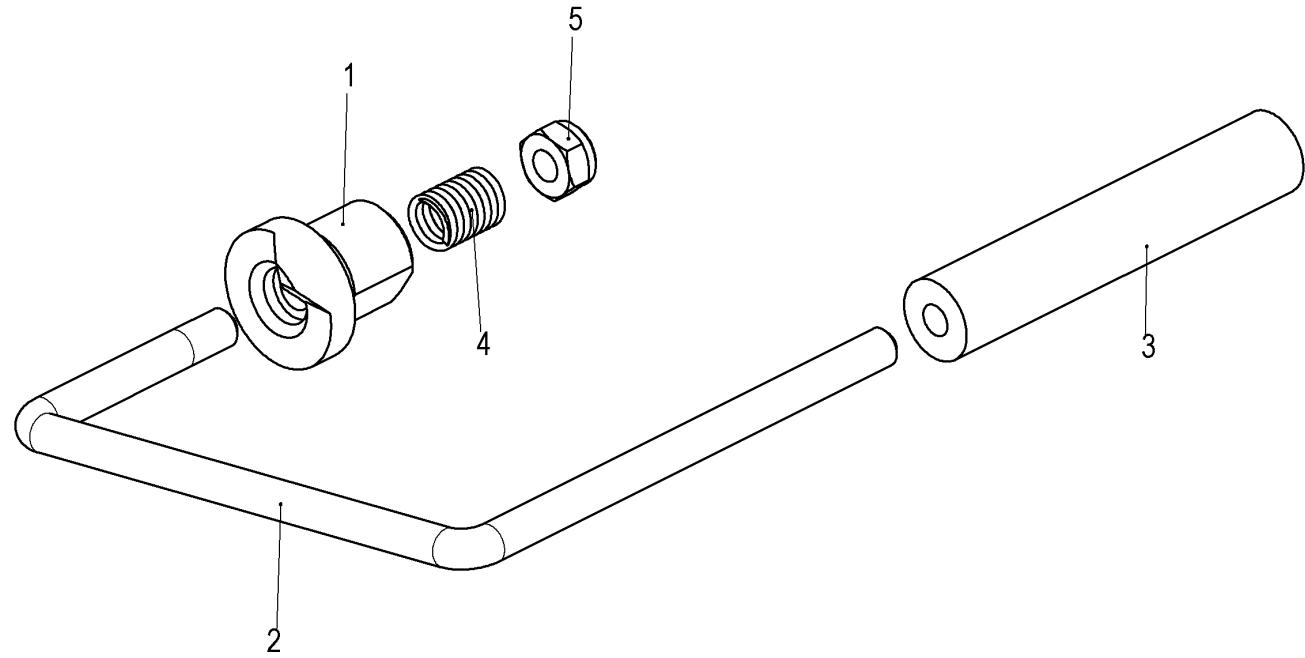
	1.1 housing			C200 MC06-Stg KPL Gas-N		Machine type	C200
	Document	Material	Sheet			Serial number	
	16000022494	105364751	1 / 1			Page	4 / 42

SYMBOLISCHE
DARSTELLUNG

SYMBOLIC
REPRESENTATION

SCHEMA

REPRESENTACION
SIMBOLICA



Document
101843955

Version	Name
a	Dreyer

Date	Sheet
9.3.2004	1 / 1


101843955_verriegelung



Verriegelung
lock

verrouillage
bloqueo

Pos.	Material	Document	Version	Description	Standard specifications	Quantity	Unit	SPI
0001	11103738001			guide bolt		1.000	PC	N
0002	11103783903			bracket		1.000	PC	N
0003	81810200508			silicon hose	D2=5 D1=13 S=4 natur Silikon	0.070	M	9
0004	19781110930			pressure spring	DA=9/Drd.1,1 Länge 28 ERCO 1707S Rund	1.000	PC	3
0005	75200200602			hexagon nut	m. Klemmteil M6 DIN 985 A2	1.000	PC	9

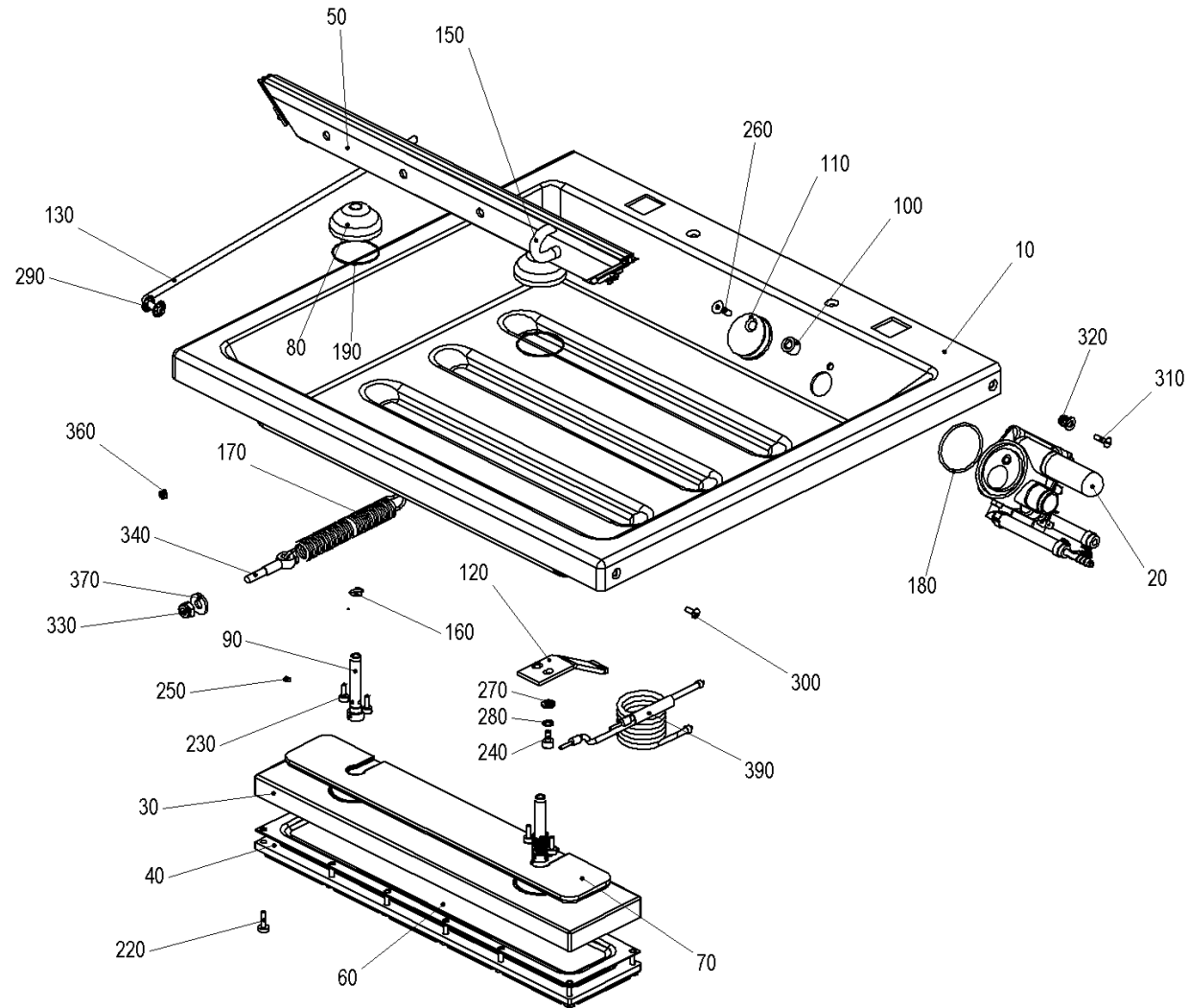
	1.1.1 lock			Maschine A200/15 A300/16	Machine type	C200	
	Document	Material	Sheet	Serial number			
	101843955	101758018	1 / 1	Page			
							6 / 42

SYMBOLISCHE
DARSTELLUNG

SYMBOLIC
REPRESENTATION

SCHEMA

REPRESENTACION
SIMBOLICA



Document
16000030665

Version	Name
e	huberch

Date	Sheet
18.9.2007	1 / 1




Unterteil
bottom section

partie inférieure
parte inferior

16000030665_unterteil

Pos.	Material	Document	Version	Description	Standard specifications	Quantity	Unit	SPI
0010	11103781292			bottom section		1.000	PC	N
0020	11181716011	101767566	-	valve		1.000	PC	N
0030	101940078	16000030674	-	housing		1.000	PC	N
0040	101940129	16000030675	-	lid		1.000	PC	N
0050	105174192	16000030680	-	sealing bar	KPL L1=465 SWB3 C200 DTSG Wakü-N Gas-N	1.000	PC	5
0060	11181798050			diaphragm	H1=1,2 B1=92 L1=408 Vulkollan	1.000	PC	3
0070	11131784060			pressure plate		1.000	PC	N
0080	11131735900			guide		2.000	PC	N
0090	11131736560			bolt		2.000	PC	N
0100	19717106300			disk		1.000	PC	N
0110	11111790001			sieve		1.000	PC	N
0120	101779388			brake bracket		1.000	PC	N
0130	11101792501			rod		1.000	PC	N
0160	19781151410			pressure spring	DA=14,6/Drd.1,5 Länge 35,4 ERCO 1808	2.000	PC	3
0170	101643292			tension spring	DA=19,8/Drd.2,5 L0=153,5 ERCO 1707SG	1.000	PC	3
0180	78301040501			o-ring	D2=40 D3=5 Viton schwarz	1.000	PC	1
0190	78301040250			o-ring	D2=40 D3=2,5 NBR	2.000	PC	1
0220	75019051116			oval head screw	M5 L2=16 DIN 7985 A2 KL TufLok	12.000	PC	9
0230	75010050916			cylindrical screw	M5 x12 DIN 912 A2 -70 KL TufLok	4.000	PC	9
0240	75010060802			cylindrical screw	M6 x10 DIN 912 A2 -70	2.000	PC	9
0250	75053040402			set screw	M4 L=6 A2 -70 DIN 914	2.000	PC	9
0260	75020061302			countersunk flat head screw	M6 L1=20 70 DIN EN ISO 10642 A2	1.000	PC	9
0270	75211010602			disk	D2=6,4 A2 DIN 125	4.000	PC	9
0280	75210070602			thrust washer	D2=6 Niro	2.000	PC	9

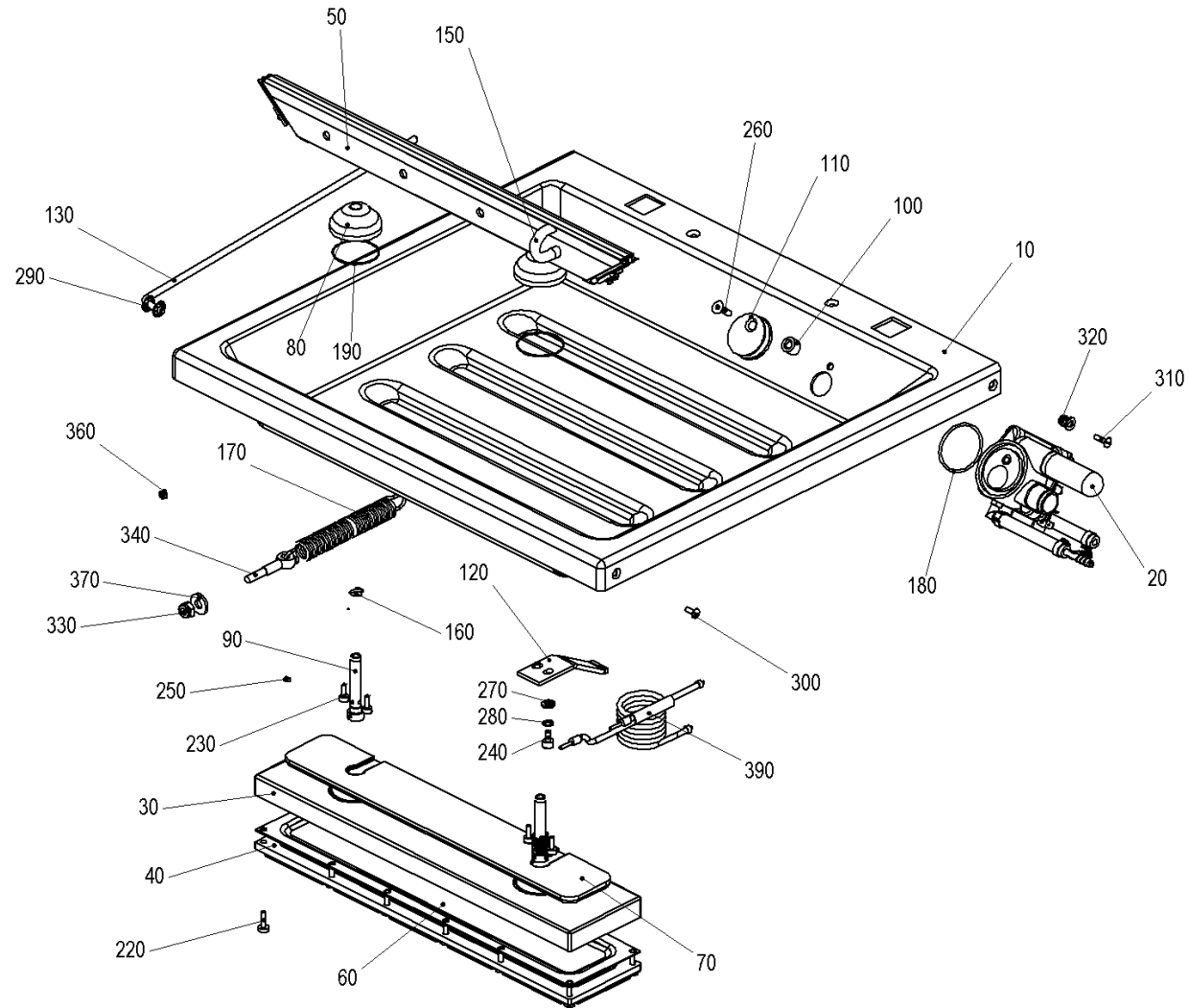
 MULTIVAC	1.2 bottom section	C200 DTSG SGL=465 1xvorn Gas-N 230 V KPL	Machine type	C200
	Document 16000030665	Material 105174199	Serial number	
		Sheet 1 / 2	Page	8 / 42

SYMBOLISCHE
DARSTELLUNG

SYMBOLIC
REPRESENTATION

SCHEMA

REPRESENTACION
SIMBOLICA



Document
16000030665

Version Name
e huberch

Date Sheet
18.9.2007 1 / 1




Unterteil
bottom section

partie inférieure
parte inferior

16000030665_unterteil

Pos.	Material	Document	Version	Description	Standard specifications	Quantity	Unit	SPI
0290	75750060600			washer for quick fastening	DA=15xDI6	2.000	PC	9
0300	75021050902			countersunk flat head screw	DIN 963 M5x12 70 A2	2.000	PC	9
0310	75021051102			countersunk flat head screw	DIN 963 M5x16 70 A2	2.000	PC	9
0320	75200200502			hexagon nut	m. Klemmteil M5 DIN 985 A2	2.000	PC	9
0330	75200200802			hexagon nut	m. Klemmteil M8 DIN 985 A2	1.000	PC	9
0340	75072082109			eyebolt		1.000	PC	N
0360	75200000401			hexagon nut	M4x0,7 St. DIN 934 gal.vernickelt	1.000	PC	9
0370	75212082002			disk	D2=8,5 A2 DIN 125	1.000	PC	9
0380	81981211002			self-adhesive sign		1.000	PC	N
0390	11186128253			cable	KPL C200 A200/15 A300/16 DNSG/DTSG vorn L=2,1	1.000	PC	9

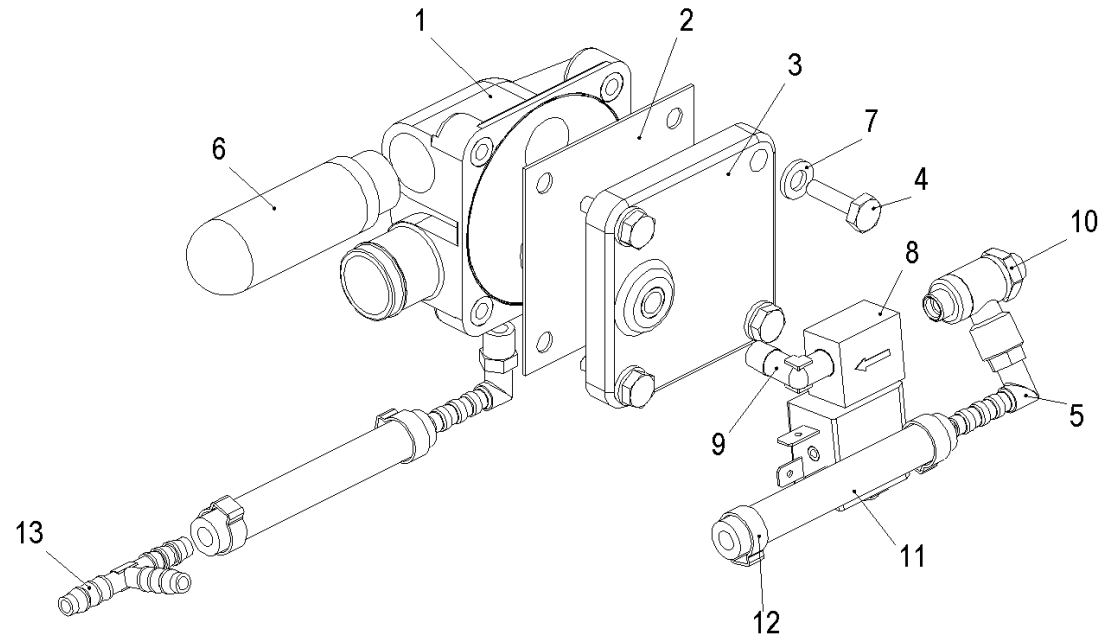
	1.2 bottom section	C200 DTSG SGL=465 1xvorn Gas-N 230 V KPL	Machine type	C200
	Document 16000030665	Material 105174199	Sheet 2 / 2	Serial number
				Page 10 / 42

SYMBOLISCHE
DARSTELLUNG

SYMBOLIC
REPRESENTATION

SCHEMA

REPRESENTACION
SIMBOLICA



Ident-No.
101767566

Index	Name
0	heider

Date	Sheet
5.11.2003	1 / 1

MULTIVAC

Ventil
valve

vanne
valvula

101767566_valvul

Pos.	Material	Document	Version	Description	Standard specifications	Quantity	Unit	SPI
0001	11181751080			valve body		1.000	PC	N
0002	11181798040			diaphragm	H1=1,1 B1=70 L1=70 PAG600B2=8 L2=8 L3=54 B3=54	1.000	PC	3
0003	11181756500			valve bonnet	L1=70 B1=70 Grivory GVN-35 H anthrazit	1.000	PC	5
0004	75001061316			hexagon-head bolt	M6 L1=20 DIN 933 A2 -70 KL TufLok	4.000	PC	9
0005	81141213210			threaded socket	DA1/8Z konisch Polyamid	2.000	PC	9
0006	80291114500			sound absorber	R1/2Z	1.000	PC	3
0007	75211010602			disk	D2=6,4 A2 DIN 125	4.000	PC	9
0008	80260112000			3/2 valve	elektr. NW-2 0 -2 bar 230V 50/60Hz IP 65 G1/8Z	1.000	PC	3
0009	81141809200			L-bracket	90 Grad A-A 1/8Z Messing vernickelt	1.000	PC	9
0010	80271111010			throttle valve	G1/8Z Schlitzschraube	1.000	PC	5
0011	81811130620			spiral hose	DI=6 D2=6 D1=11 S=2,5 PVC transparent	200.000	MM	9
0012	81190200621			hose clamp	1-OHR 10,8-12,8 1.4301	4.000	PC	9
0013	81141293122			hose connector	Kunststoff LW6 T D2=4	1.000	PC	9



MULTIVAC

1.2.1 valve

KPL 230 V

Machine type

C200

Document

Material

Sheet

Serial number

101767566

11181716011

1 / 1

Page

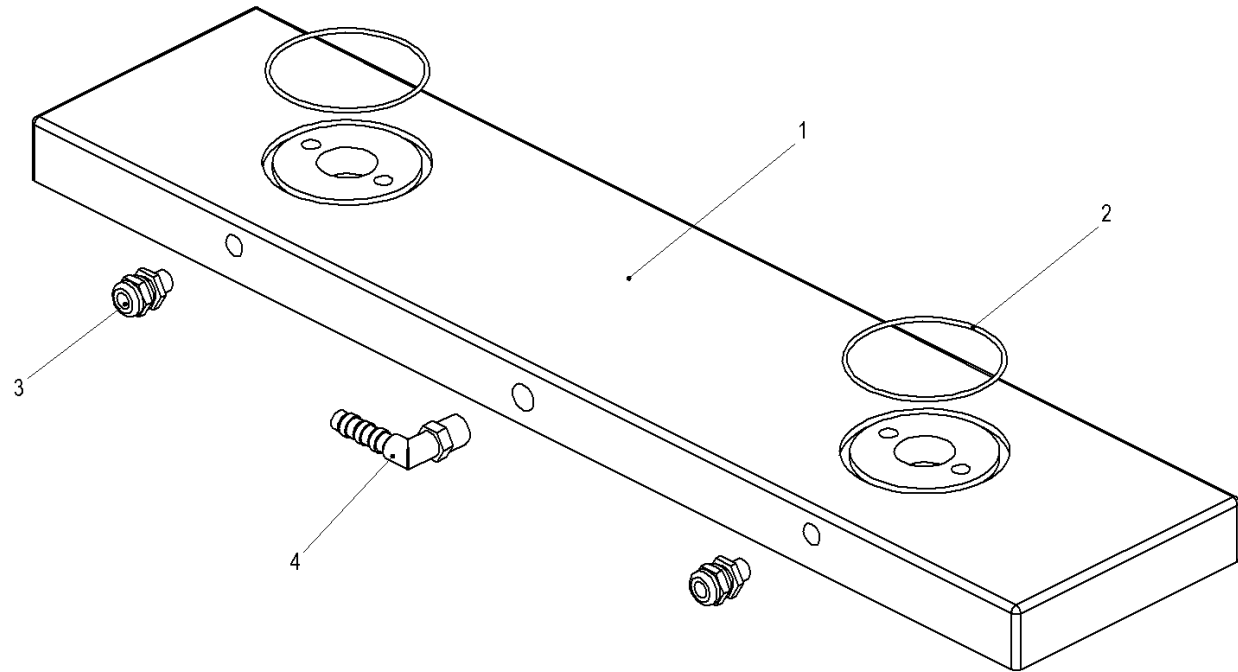
12 / 42

SYMBOLISCHE
DARSTELLUNG

SYMBOLIC
REPRESENTATION

SCHEMA

REPRESENTACION
SIMBOLICA



Document

16000030674

Version	Name
0	huberch

0	huberch
---	---------

Date	Sheet
18.9.2007	1 / 1

18.9.2007	1 / 1
-----------	-------



Gehäuse


housing

boitier

carcasa

16000030674_gehäuse

Pos.	Material	Document	Version	Description	Standard specifications	Quantity	Unit	SPI
0001	11131762101			housing		1.000	PC	N
0002	78301044300			o-ring	D2=44 D3=3 NBR	2.000	PC	1
0003	85131115710			screwed cable gland		2.000	PC	N
0004	81141213210			threaded socket	DA1/8Z konisch Polyamid	1.000	PC	9

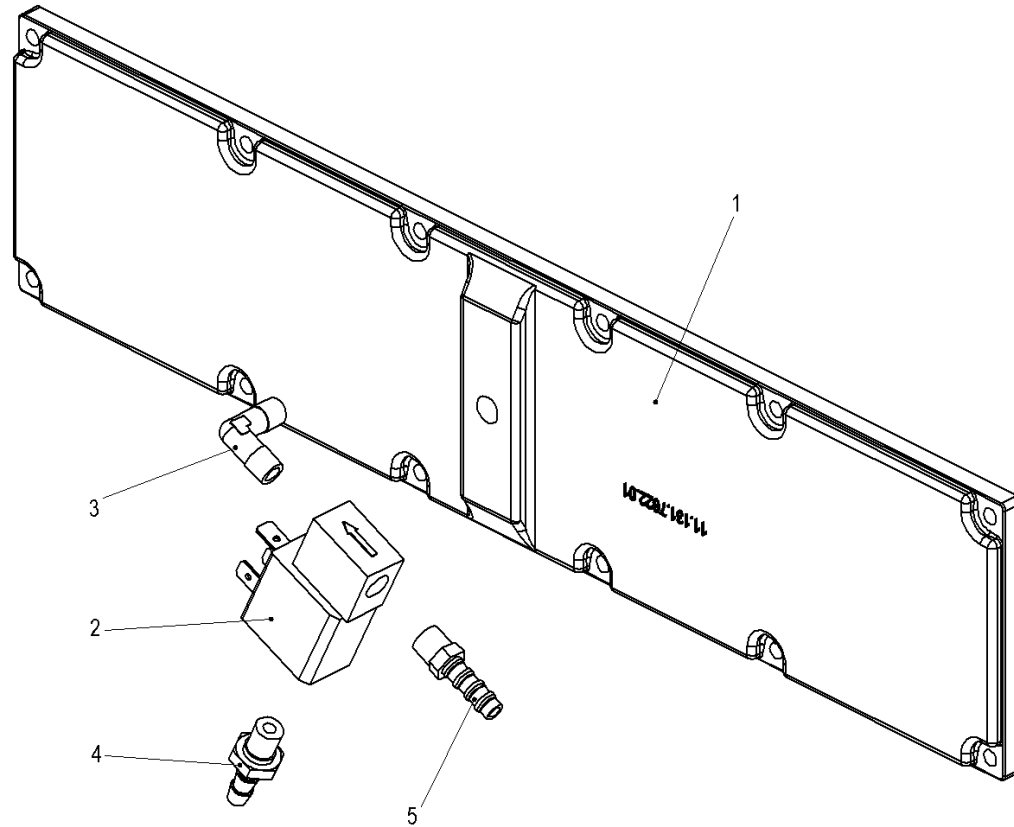
	1.2.2 housing			EBT f.Membrane C200 B1=94 L1=410		Machine type	C200
	Document	Material	Sheet			Serial number	
	16000030674	101940078	1 / 1			Page	14 / 42

SYMBOLISCHE
DARSTELLUNG

SYMBOLIC
REPRESENTATION

SCHEMA

REPRESENTACION
SIMBOLICA



Document

16000030675

Version	Name
0	huberch

Date	Sheet
18.9.2007	1 / 1

Date	Sheet
18.9.2007	1 / 1



Deckel


lid

couvercle

tapa

16000030675_deckel

Pos.	Material	Document	Version	Description	Standard specifications	Quantity	Unit	SPI
0001	11131762201			lid		1.000	PC	N
0002	80260112000			3/2 valve	elektr. NW-2 0 -2 bar 230V 50/60Hz IP 65 G1/8Z	1.000	PC	3
0003	81141809200			L-bracket	90 Grad A-A 1/8Z Messing vernickelt	1.000	PC	9
0004	81141153010			threaded socket	M5 Messing	1.000	PC	9
0005	80291114100			sound absorber	R1/8Z SIKA B70 SINTERBRONZE	1.000	PC	3
0006	85148201110			fixing base		1.000	PC	N

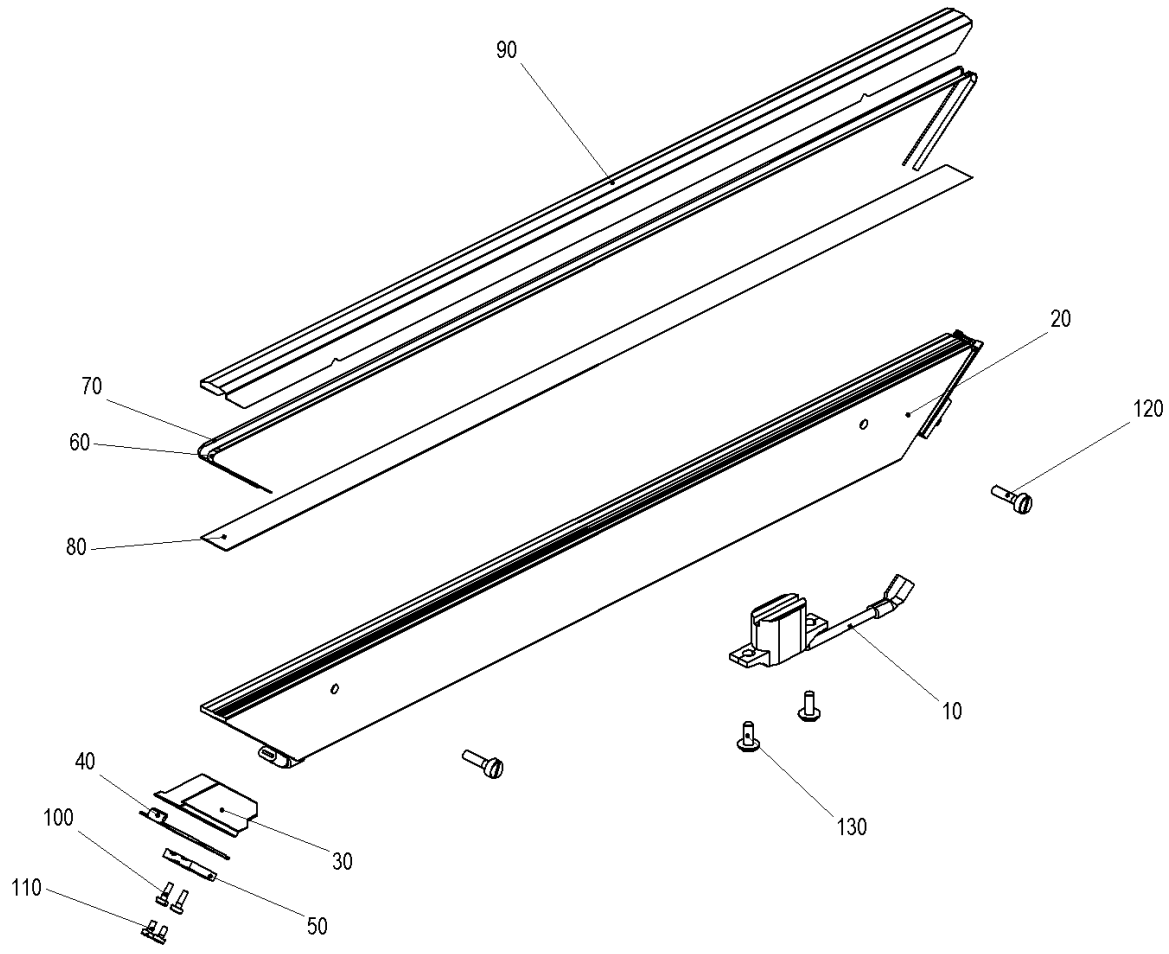
	1.2.3 lid			Machine type	C200
	Document	Material	Sheet	Serial number	
	16000030675	101940129	1 / 1	Page	16 / 42

SYMBOLISCHE
DARSTELLUNG

SYMBOLIC
REPRESENTATION

SCHEMA

REPRESENTACION
SIMBOLICA



Document
16000030680

Version	Name
0	huberch

Date	Sheet
18.9.2007	1 / 1


16000030680_siegelschiene



Siegelschiene
sealing bar

barre de soudure
barra de soldadura

Pos.	Material	Document	Version	Description	Standard specifications	Quantity	Unit	SPI
0010	85123126100	101835620	-	contact jack		2.000	PC	N
0020	105174197			sealing bar		1.000	PC	N
0030	11131243230			insulator		2.000	PC	N
0040	11131187050			contact spring	B1=61 L1=16 CuSn6 F65	2.000	PC	5
0050	11131268010			clamping piece	L1=20 CuZn44Pb2P	2.000	PC	3
0060	11131198180			heat band	L 650 mm B 3 mm D 0,3 mm NiCr80-20 Hohl	1.000	PC	1
0070	85662802090			round wire	50 mmx0,9 mm NiCr80-20 rund	650.000	MM	1
0080	81848121001			Teflon tape	0,25x16	610.000	MM	1
0090	81848121006			Teflon tape	0,13x40	490.000	MM	1
0100	75015030602			cylindrical screw	M3 L2=8 DIN 84 A2 70	4.000	PC	9
0110	75015030302			cylindrical screw	M3 L2=5 DIN 84 A2	4.000	PC	9
0120	75015051102			cylindrical screw	M5 L2=16 DIN 84 A2 70	2.000	PC	9
0130	75028050802			oval head screw	M5 L2=10 ISO 7380 A2	4.000	PC	9

	1.2.4 sealing bar	KPL L1=465 SWB3 C200 DTSG Wakü-N Gas-N	Machine type	C200
	Document 16000030680	Material 105174192	Serial number	
		Sheet 1 / 1	Page	18 / 42

Stückliste ohne Zeichnung

Parts list without drawing

Liste des pièces sans illustration

Lista de piezas sin ilustración

DE 101835630 001 -



MULTIVAC

Pos.	Material	Document	Version	Description	Standard specifications	Quantity	Unit	SPI
------	----------	----------	---------	-------------	-------------------------	----------	------	-----

--	--	--	--	--	--	--	--	--



MULTIVAC

1.2.4.1 contact jack

100 mm 10 mm 22,5 mm

Machine type

C200

Serial number

Document
101835620

Material
85123126100

Sheet
1 / 1

Page

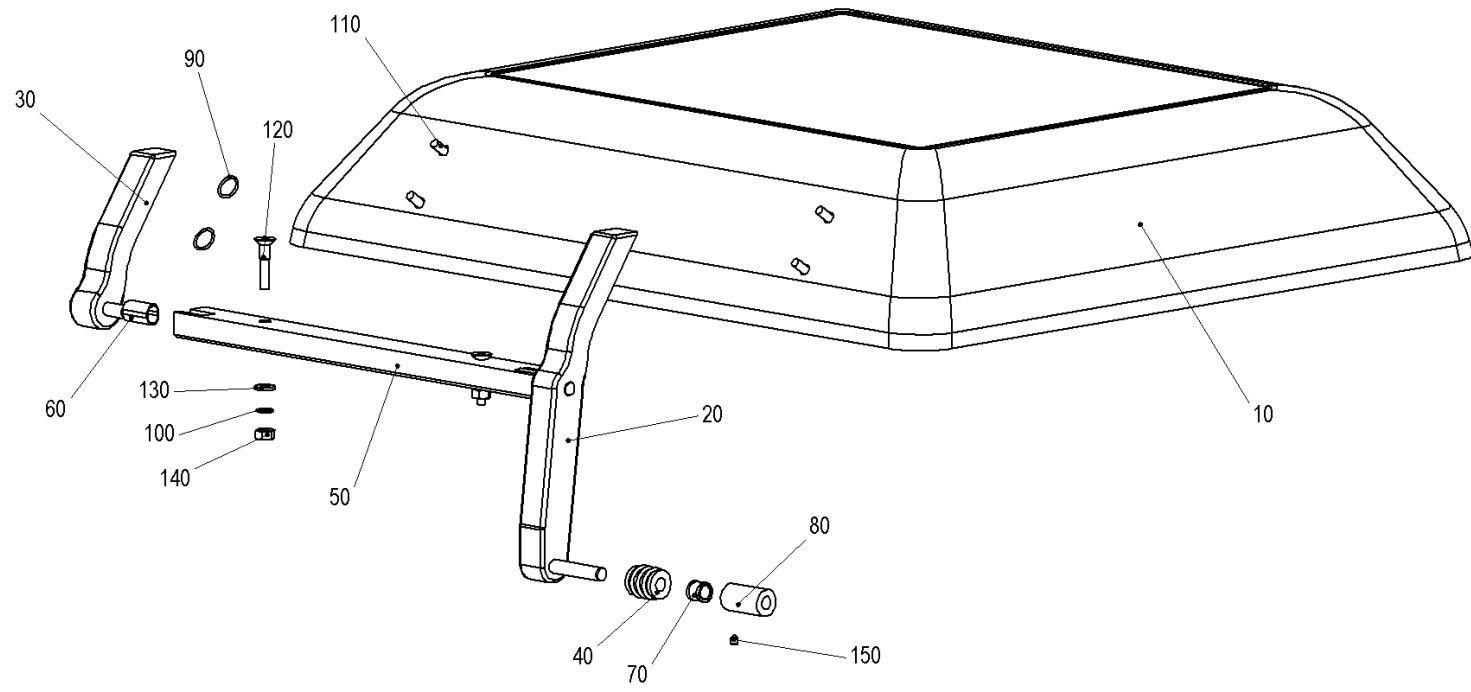
20 / 42

SYMBOLISCHE
DARSTELLUNG

SYMBOLIC
REPRESENTATION

SCHEMA

REPRESENTACION
SIMBOLICA



Document

16000036894

Version Name

a huberch

Date Sheet

31.1.2008 1 / 1



MULTIVAC

Deckel

lid

couvercle

tapa

16000036894_deckel

Pos.	Material	Document	Version	Description	Standard specifications	Quantity	Unit	SPI
0010	105128865	16000036897	D	lid		1.000	PC	N
0020	105312357	16000036898	-	hinge		1.000	PC	N
0030	105312358	16000036900	-	hinge		1.000	PC	N
0040	101939882			reel		1.000	PC	N
0050	101723033			hinge		1.000	PC	N
0060	19410109000			socket		2.000	PC	N
0070	11631036000			socket		1.000	PC	N
0080	101779596			holder		1.000	PC	N
0090	78301010300			o-ring	D2=10 D3=3 NBR	4.000	PC	1
0100	75210070602			thrust washer	D2=6 Niro	2.000	PC	9
0110	75020061302			countersunk flat head screw	M6 L1=20 70 DIN EN ISO 10642 A2	4.000	PC	9
0120	75020061702			countersunk flat head screw	M6 L1=30 70 DIN EN ISO 10642 A2	2.000	PC	9
0130	75211010602			disk	D2=6,4 A2 DIN 125	2.000	PC	9
0140	75200000602			hexagon nut	M6x1 A2 DIN 934	2.000	PC	9
0150	75053040402			set screw	M4 L=6 A2 -70 DIN 914	1.000	PC	9



MULTIVAC

1.3 lid

KPL KH150 Fenst.-J Wakü-N C200 DNSG/DTSG/EFSG SGL=

Machine type

C200

Document

Material

Sheet

Serial number

16000036894

105128864

1 / 1

Page

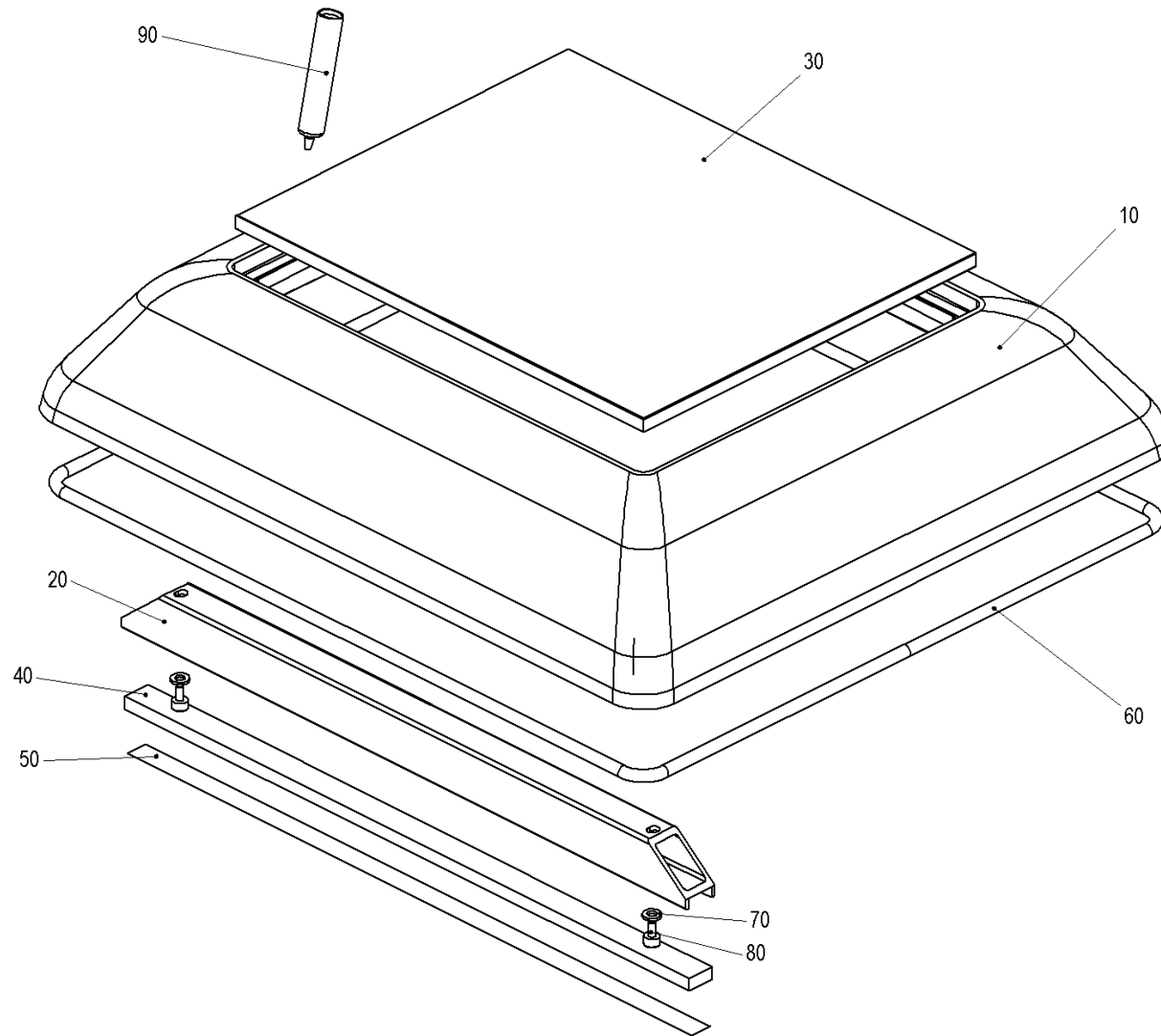
22 / 42

SYMBOLISCHE
DARSTELLUNG

SYMBOLIC
REPRESENTATION

SCHEMA

REPRESENTACION
SIMBOLICA



Document

16000036897

Version	Name
d	huberch

Date	Sheet
31.1.2008	1 / 1

16000036897_deckel



Deckel
lid

couvercle
tapa

Pos.	Material	Document	Version	Description	Standard specifications	Quantity	Unit	SPI
0010	105172630			lid		1.000	PC	N
0020	11131244530			rail		1.000	PC	N
0030	102014404			window		1.000	PC	N
0040	81863151040			profile cord	Silikongummi 60 Shore B1=20,3 H1=9	490.000	MM	1
0050	81848121000			Teflon tape	0,13x16	490.000	MM	1
0060	81810200456			silicon hose	D2=4,5 ±0,3mm D1=8,5 S=2 transparent Silikon	2.000	M	9
0070	75211010602			disk	D2=6,4 A2 DIN 125	2.000	PC	9
0080	75010060816			cylindrical screw	M6 x10 DIN 912 A2 -70 KL TufLok	2.000	PC	9
0090	105060495			silicone elastomer		1.000	PC	N



MULTIVAC

1.3.1 lid

KPL KH150 Fenst.-J Wakü-N C200 DNSG/DTSG/EFSG SGL=

Machine type

C200

Document

Material

Sheet

Serial number

16000036897

105128865

1 / 1

Page

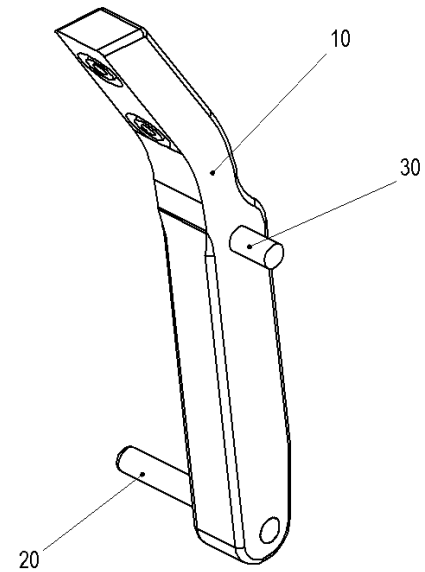
24 / 42

SYMBOLISCHE
DARSTELLUNG

SYMBOLIC
REPRESENTATION

SCHEMA

REPRESENTACION
SIMBOLICA



Document

16000036898

Version Name

0 huberch

Date Sheet

31.1.2008 1/1




Scharnier

hinge

charnière

bisagra

Pos.	Material	Document	Version	Description	Standard specifications	Quantity	Unit	SPI
0010	101667280			hinge		1.000	PC	N
0020	75300082402			straight pin	D1=8 L1=60 DIN 7 A2	1.000	PC	9
0030	75301081902			straight pin	D1=8 L1=36 DIN 6325 A2	1.000	PC	9

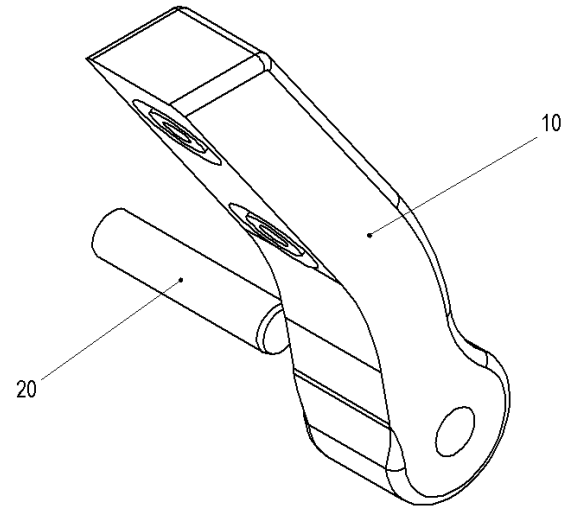
	1.3.2 hinge			Machine type	C200
	Document	Material	Sheet	Serial number	
	16000036898	105312357	1 / 1	Page	26 / 42

SYMBOLISCHE
DARSTELLUNG

SYMBOLIC
REPRESENTATION

SCHEMA

REPRESENTACION
SIMBOLICA



Document

16000036900

Version	Name
0	huberch

0	huberch
---	---------

Date	Sheet
31.1.2008	1 / 1

31.1.2008	1 / 1
-----------	-------



Scharnier


hinge

charnière

bisagra

16000036900_scharnier

Pos.	Material	Document	Version	Description	Standard specifications	Quantity	Unit	SPI
0010	101667279			hinge		1.000	PC	N
0020	75301081902			straight pin	D1=8 L1=36 DIN 6325 A2	1.000	PC	9

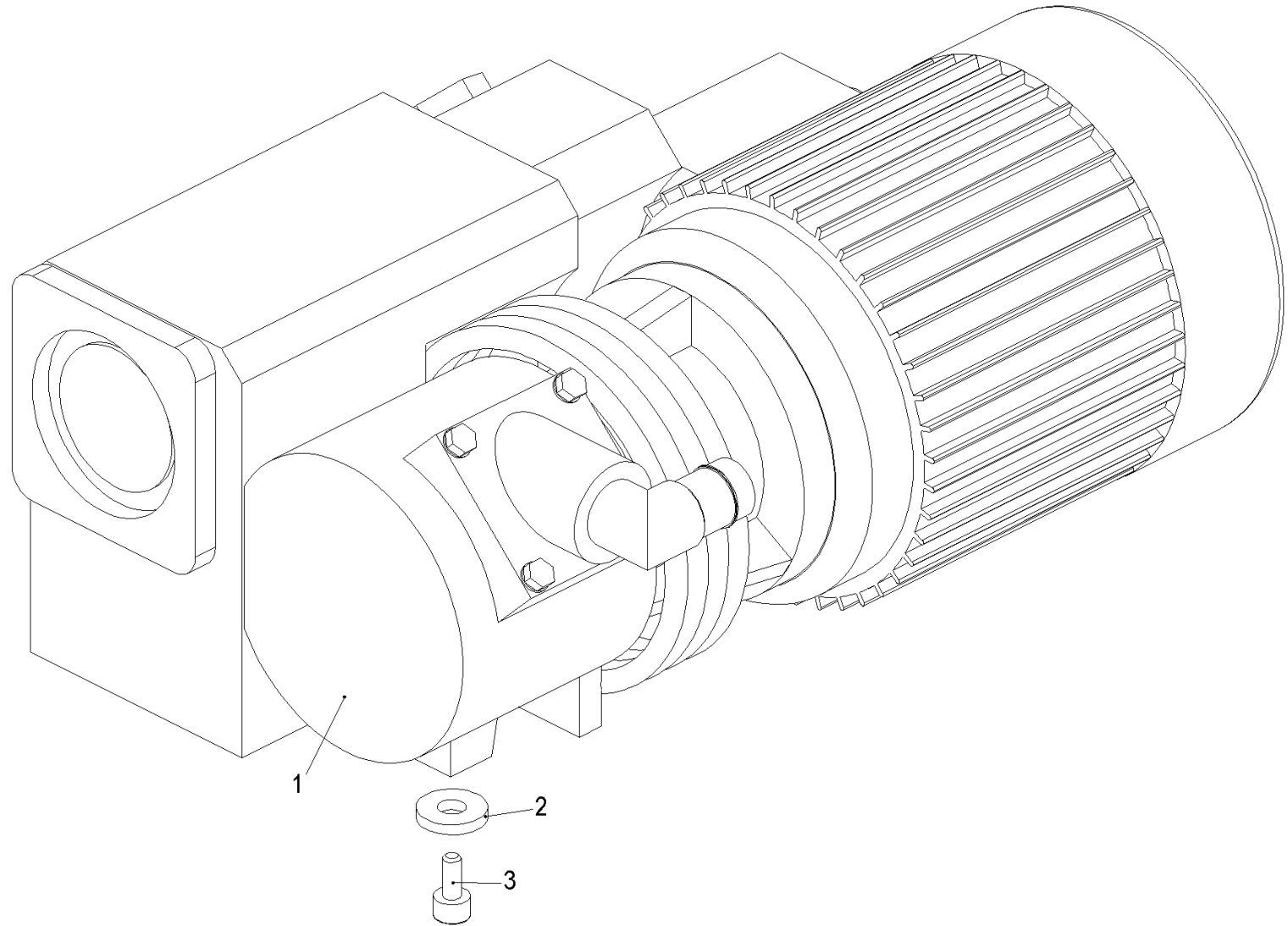
	1.3.3 hinge			Machine type	C200
	Document	Material	Sheet	Serial number	
	16000036900	105312358	1 / 1	Page	28 / 42

SYMBOLISCHE
DARSTELLUNG

SYMBOLIC
REPRESENTATION

SCHEMA

REPRESENTACION
SIMBOLICA



Ident-No.
101843604

Index	Name
0	Dreyer

Date	Sheet
8.3.2004	1 / 1


MULTIVAC

Vakuumpumpe
vacuum pump

pompe à vide
bomba de vacío

101843604_vakuumpumpe

Pos.	Material	Document	Version	Description	Standard specifications	Quantity	Unit	SPI
0001	80121402814			vacuum pump		1.000	PC	N
0002	19717110150			disk		3.000	PC	N
0003	75010081116			cylindrical screw	M8 x16 DIN 912 A2 -70 KL TufLok	3.000	PC	9
0004	75211030802			disk	D2=8,4 A2 DIN 9021	3.000	PC	9

	1.4 vacuum pump			EBT R5-RB0021B 1x 220V 50Hz		Machine type	C200
	Document	Material	Sheet			Serial number	
	101843604	101779910	1 / 1			Page	30 / 42

Stückliste ohne Zeichnung

Parts list without drawing

Liste des pièces sans illustration

Lista de piezas sin ilustración

DE 101835620 001 -



MULTIVAC

Pos.	Material	Document	Version	Description	Standard specifications	Quantity	Unit	SPI
0001	90810180502			label		1.000	PC	N



MULTIVAC

1.5 type plate

DE 120x80

Machine type

C200

Document
101835620

Material
81981101300

Sheet
1 / 1

Serial number

Page

32 / 42

Stückliste ohne Zeichnung

Parts list without drawing

Liste des pièces sans illustration

Lista de piezas sin ilustración



MULTIVAC

Pos.	Material	Document	Version	Description	Standard specifications	Quantity	Unit	SPI
0020	81141809200			L-bracket	90 Grad A-A 1/8Z Messing vernickelt	1.000	PC	9
0021	80260112000			3/2 valve	elektr. NW-2 0 -2 bar 230V 50/60Hz IP 65 G1/8Z	1.000	PC	3
0022	81141153010			threaded socket	M5 Messing	1.000	PC	9
0023	75290000500			sealing ring	D1=8 D2=5 H1=1 Kunststoff	1.000	PC	1
0031	19717110150			disk		3.000	PC	N
0032	75010081116			cylindrical screw	M8 x16 DIN 912 A2 -70 KL TufLok	3.000	PC	9
0037	81811132230			spiral hose	DI=22 D2=22 D1=29,2 S=3,6 PVC transparent	750.000	MM	9
0057	81141293122			hose connector	Kunststoff LW6 T D2=4	1.000	PC	9
0080	81811120610			fabric hose	DI=6 D2=6 D1=12 3 PVC transparent	1.750	M	9
0082	81190200621			hose clamp	1-OHR 10,8-12,8 1.4301	8.000	PC	9
0094	81190112282			hose clamp	D28 B15 ZY ST GAL ZN	2.000	PC	9



MULTIVAC

1.6 pneumatics

C200 MC06 Maschine 230 V

Machine type

C200

Document

Material

Sheet

Serial number

16000010430

101782562

1 / 1

Page

34 / 42

Stückliste ohne Zeichnung

Parts list without drawing

Liste des pièces sans illustration

Lista de piezas sin ilustración

DE 101835620 001 -



MULTIVAC

Pos.	Material	Document	Version	Description	Standard specifications	Quantity	Unit	SPI
0020	105416805			wiring harness		1.000	PC	N
0030	85631512561			power relay	220 V 20 A	1.000	PC	1
0040	85631512561			power relay	220 V 20 A	1.000	PC	1
0050	85641281115			transformer		1.000	PC	N
0060	85211050000			jumper wire		1.000	PC	N
0070	85211050000			jumper wire		1.000	PC	N



MULTIVAC

1.7 switchboard KPL C200 o.Gas 230V1+N DNSG/DTSG/EFSG MC06-K20-Stg

Document
101835620

Material
105382108

Sheet
1 / 1

Machine type C200

Serial number

Page 36 / 42

Stückliste ohne Zeichnung

Parts list without drawing

Liste des pièces sans illustration

Lista de piezas sin ilustración

DE 101835630 001 -



MULTIVAC

Pos.	Material	Document	Version	Description	Standard specifications	Quantity	Unit	SPI
0010	105326253			control unit	2Eing.5Ausg.programmiert MC06-K20 IP 20 teilbestüc	1.000	PC	
0030	105387752			magnetic reed switch	150 V 0,5 A 10 W 1 m	1.000	PC	3
0040	105063889			electrical system		1.000	PC	N
0050	85211050080			earthing contact lead		1.000	PC	N
0060	105061366			switchboard		1.000	PC	N



MULTIVAC

1.8 electrical system

EBT C200 230V 1+N DNSG/DTSG/EFSG MC06-K20

Machine type

C200

Document

Material

Sheet

Serial number

101835620

105415903

1 / 1

Page

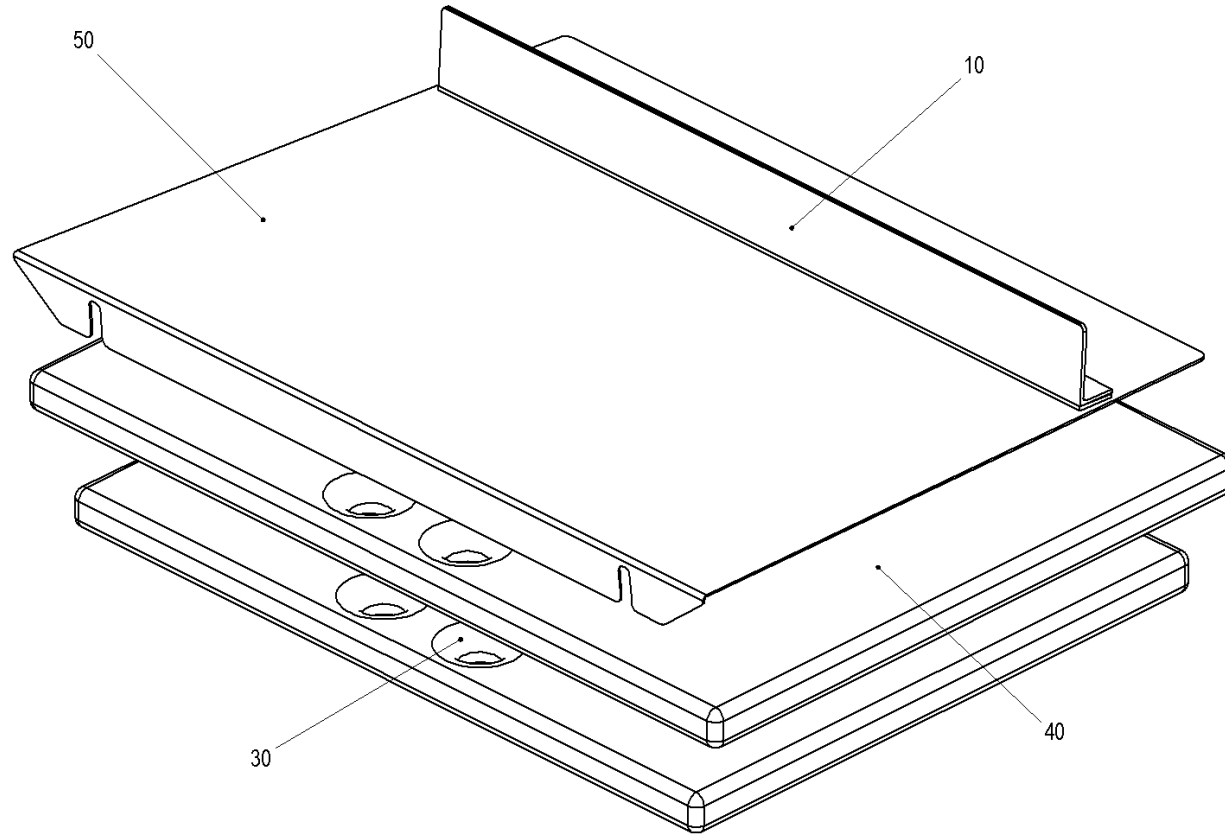
38 / 42

SYMBOLISCHE
DARSTELLUNG

SYMBOLIC
REPRESENTATION

SCHEMA

REPRESENTACION
SIMBOLICA



Document

16000030664

Version	Name
0	huberch

Date	Sheet
18.9.2007	1 / 1

Date	Sheet
18.9.2007	1 / 1



Zubehör


accessories

accessoires

accesorios

16000030664_zubehör

Pos.	Material	Document	Version	Description	Standard specifications	Quantity	Unit	SPI
0010	11191786022			L-bracket		1.000	PC	N
0020	11131117217	102039852	-	repair kit	C100 DTSG	1.000	PC	5
0030	11191772590			filling plate		1.000	PC	N
0040	11191772580			filling plate		1.000	PC	N
0050	11191782140			diagonal insert		1.000	PC	N

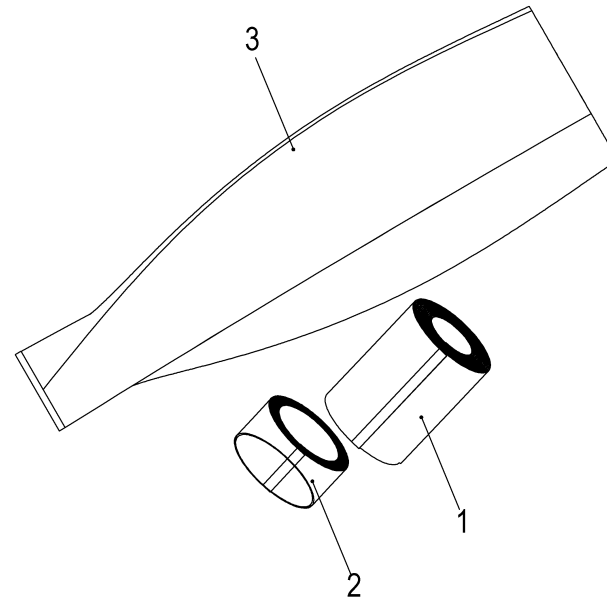
	1.9 accessories			C200 DTSG/DNSG/EFSG	Machine type	C200
	Document	Material	Sheet	Serial number		
	16000030664	105489463	1 / 1	Page		
						40 / 42

SYMBOLISCHE
DARSTELLUNG

SYMBOLIC
REPRESENTATION

SCHEMA

REPRESENTACION
SIMBOLICA



Ident-No.
102039852

Index	Name
0	schmoelz

Date	Sheet
9.12.2004	1 / 1


MULTIVAC

Reparatursatz
repair kit

jeu de réparation
juego para reparaciones

102039852_reparatursatz

Pos.	Material	Document	Version	Description	Standard specifications	Quantity	Unit	SPI
0001	81848121006			Teflon tape	0,13x40	2.000	M	1
0002	81848121001			Teflon tape	0,25x16	2.000	M	1
0003	81897205101			pouch		1.000	PC	N

	1.9.1 repair kit			C100 DTSG	Machine type	C200
	Document	Material	Sheet	Serial number		
	102039852	11131117217	1 / 1	Page		
						42 / 42