

Spare Parts List GS 24

Edited: 05/92
Revised: 04/00

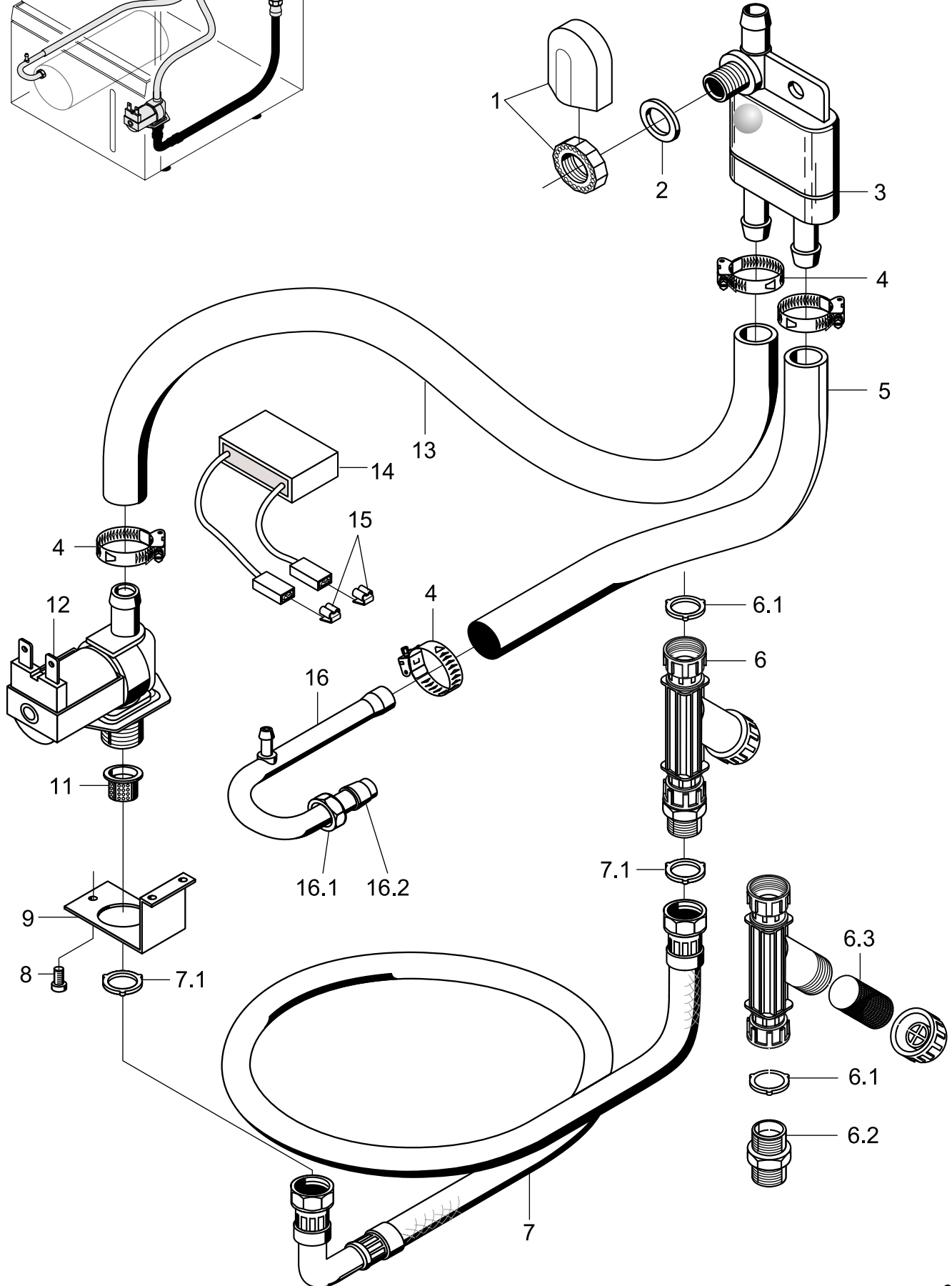
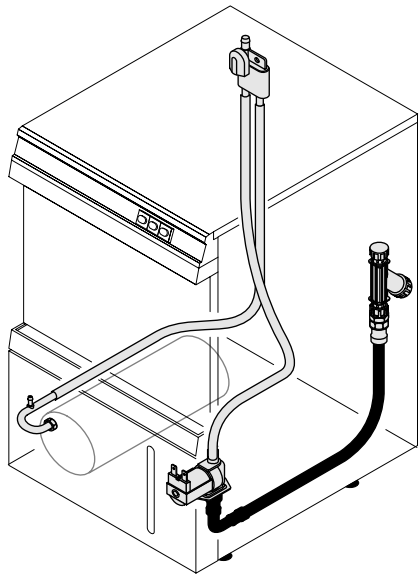
Part no.: 890010854

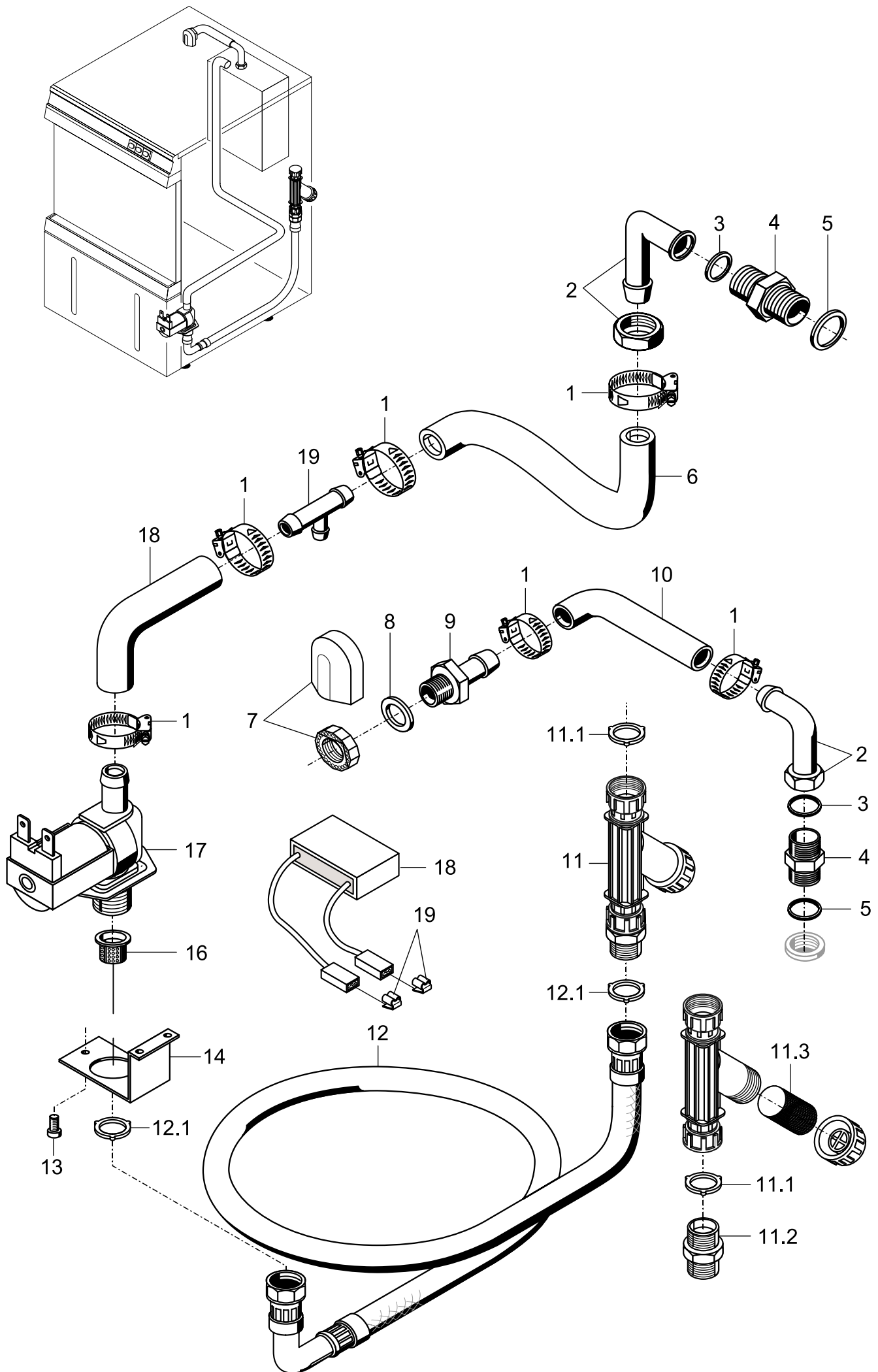
Summary

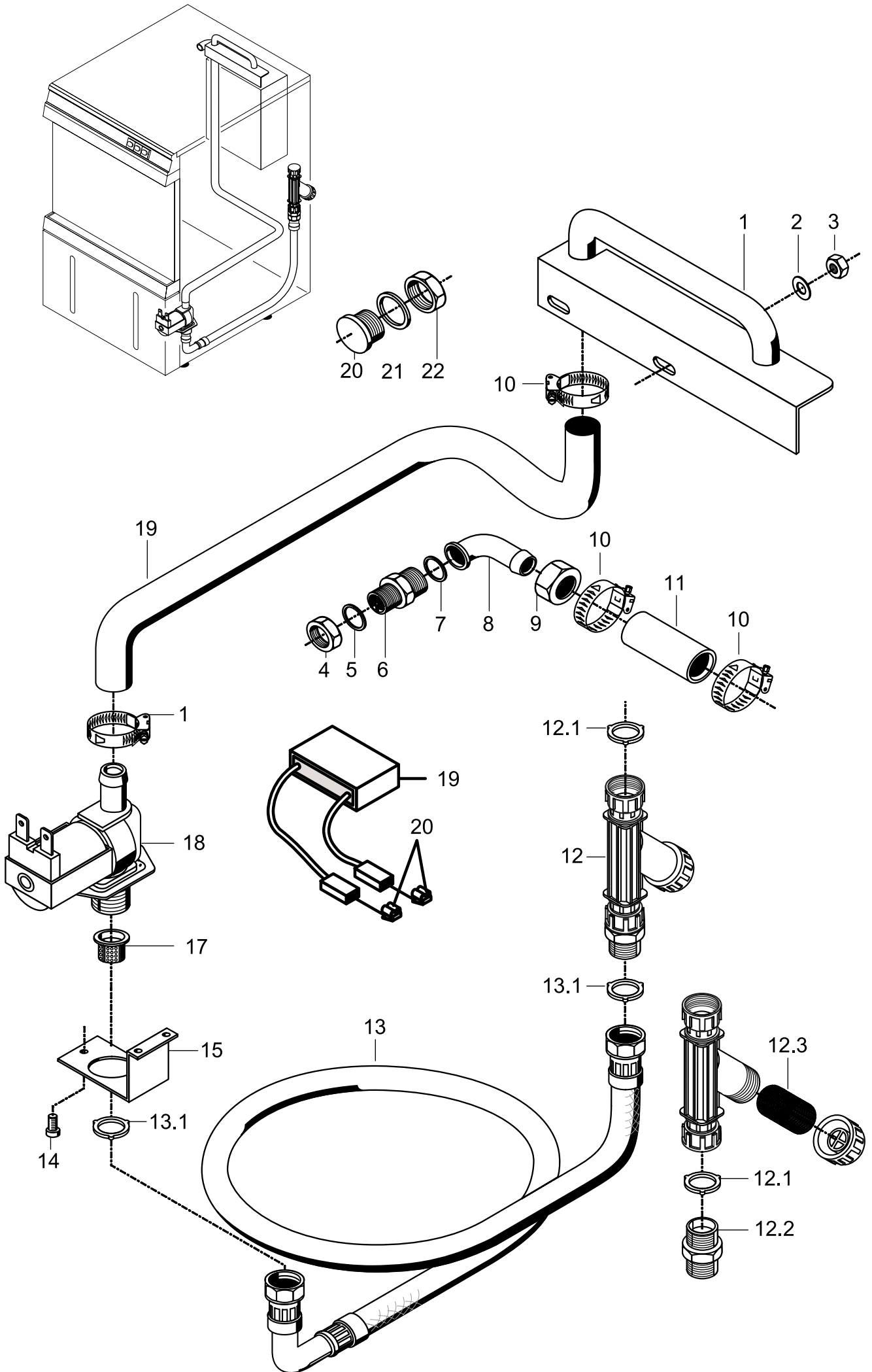
Water inlet	Pages 1 and 2
Water inlet AquaMatik Machine no.: ⇒ 353 914	Pages 3 and 4
Water inlet AquaMatik / Tundish Machine no.: 353 915 ⇒	Pages 5 and 6
Water outlet and tank heating	Pages 7 and 8
Wash system I	Pages 9 and 10
Wash system II	Pages 11 and 12
Rinse I	Pages 13 and 14
Rinse II AquaMatik Machine no.: ⇒ 353 914	Pages 15 and 16
Rinse II AquaMatik Machine no.: 353 915 ⇒	Pages 17 and 18
Rinse III Tundish	Pages 19 and 20
Rinse IV	Pages 21 and 22
Rinse V AquaMatik / Tundish	Pages 23 and 24
Dosing	Pages 25 and 26
Door; machine no.: ⇒ 180 734	Pages 27 and 28
Door; machine no.: 180 735 ⇒	Pages 29 and 30
Panelling, base frame and tank Machine no.: ⇒ 231 800	Pages 31 and 32
Electrical parts I; machine no.: ⇒ 215 150	Pages 33 and 34
Electrical parts I; machine no.: 215 151 ⇒	Pages 35 and 36
Electrical parts II; machine no.: ⇒ 215 150	Pages 37 and 38
Electrical parts II; machine no.: 215 151 ⇒	Pages 39 and 40
Cold-water rinse (Option)	Pages 41 and 42
Drain pump (Option)	Pages 43 and 44

See separate list for racks and accessories.

Enter the required quantity in the column marked "Pc." if more than 1 part is installed and if this part is not a standard part.







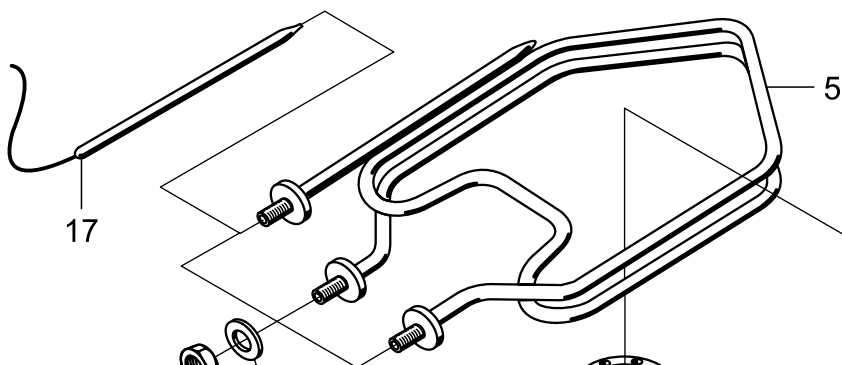
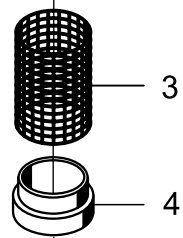
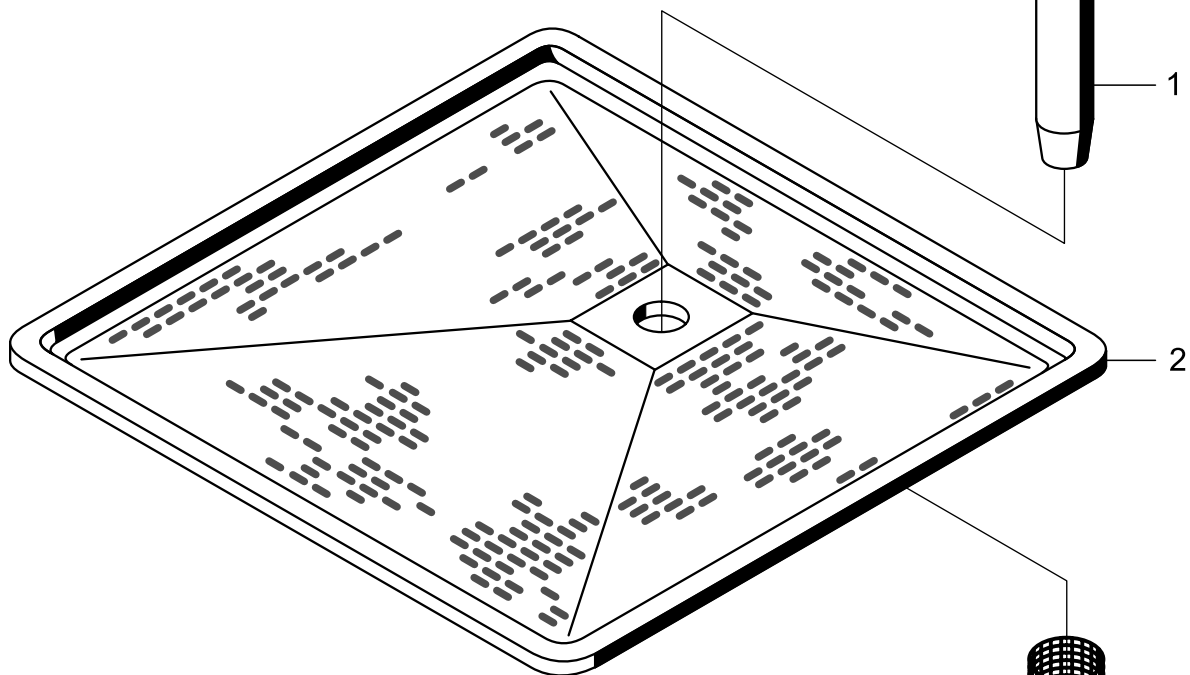
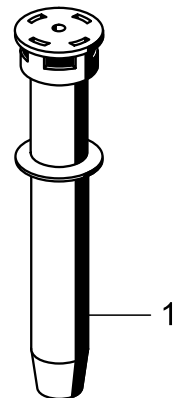
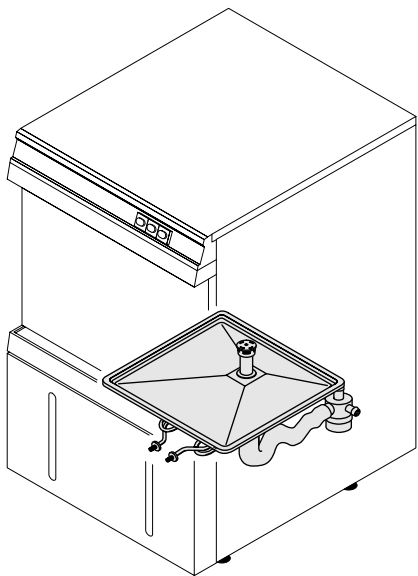
GS 24 - AquaMatik

Machine no.: 353 915 ⇒

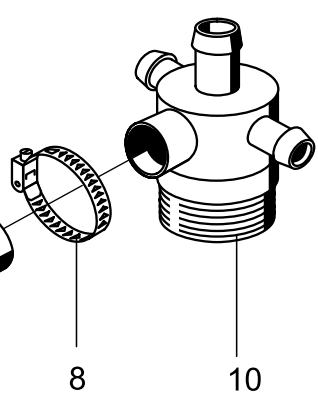
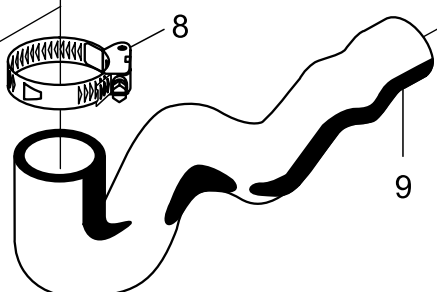
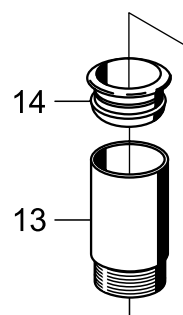
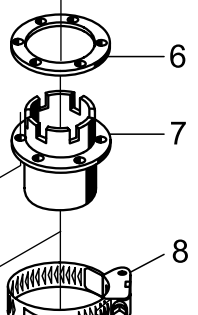
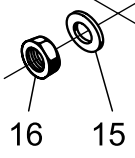
GS 24 - Tundish

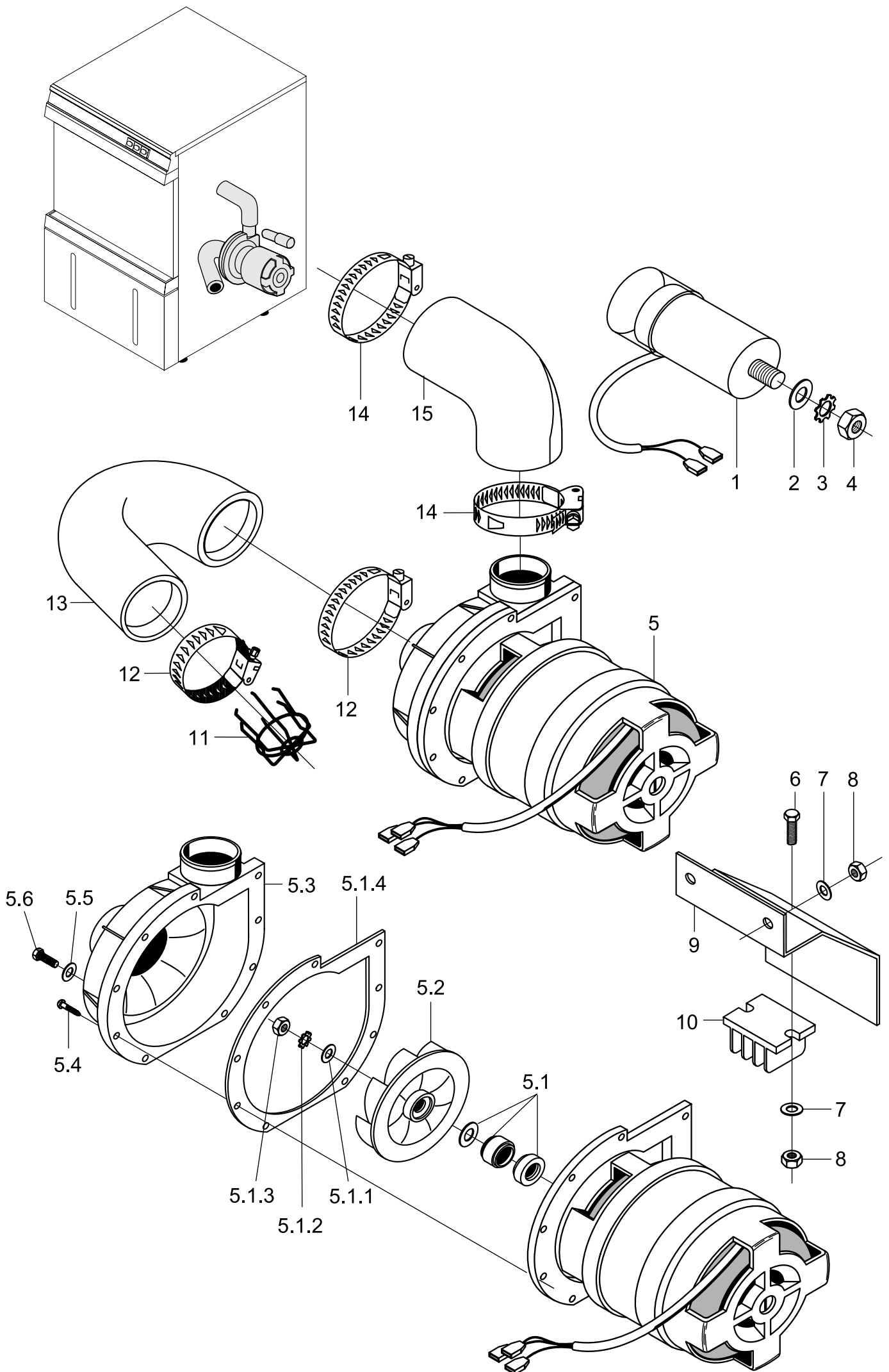
Water inlet

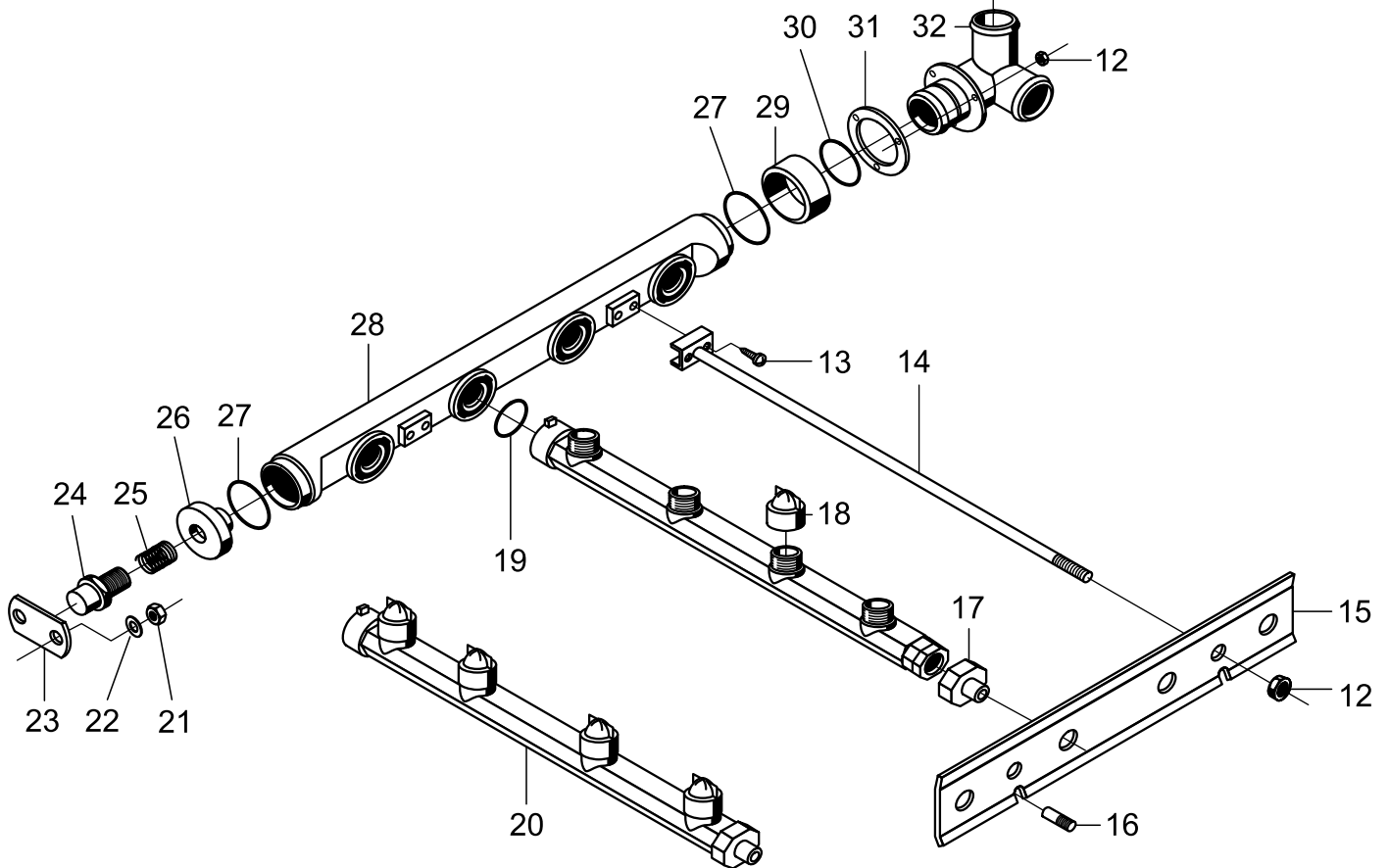
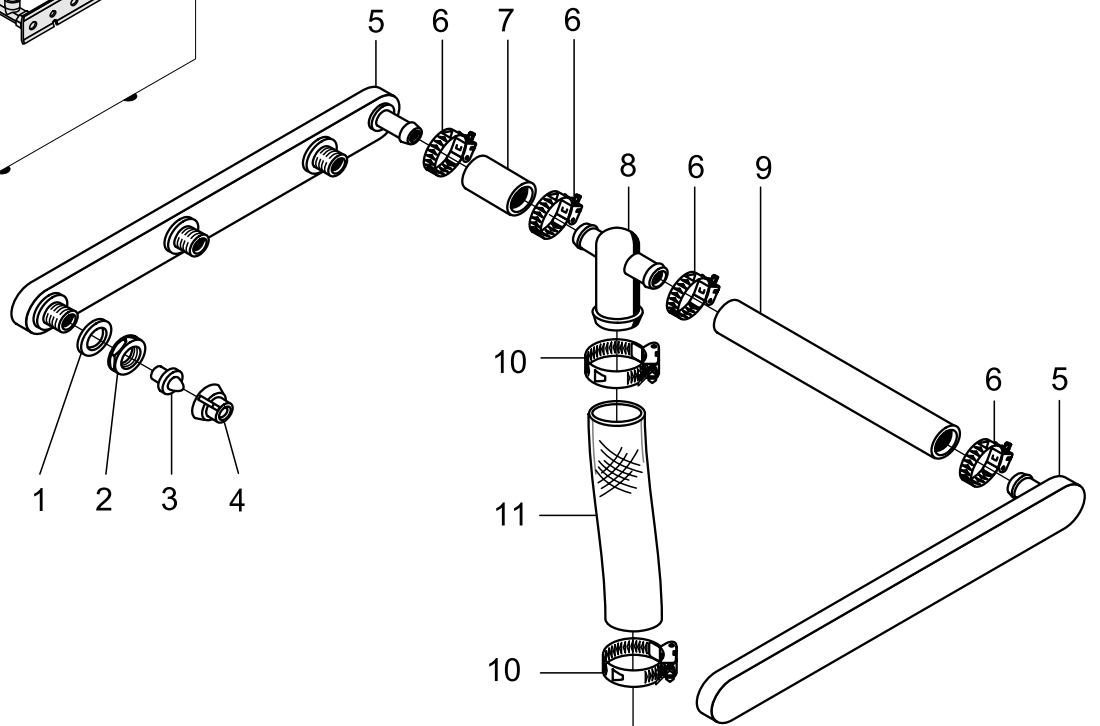
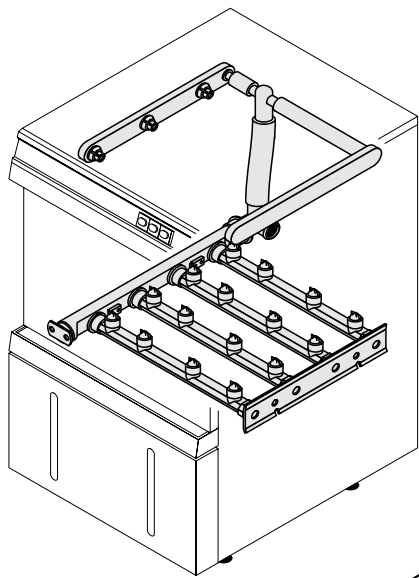
Item	Designation	Part no.	Pc.	Notes
1	Inlet bend cpl.	62002242		Tundish only
2	Washer; \varnothing 5.3 x \varnothing 10.0 x 1.0	22 01 300		
3	Hex nut; M 5 self-locking	21 05 302		
4	Lock nut; G 1/2" x 8; width A/F 27	30 09 201		
5	Seal; \varnothing 19.5 x \varnothing 24 x 1.5	27 09 010		
6	Mediamat connecting nipple; G 1/2" x G 3/4" x 32	30 11 502		
7	Seal; \varnothing 22 x \varnothing 30 x 1.5	27 09 015		
8	Mediamat connecting bend	29 06 524		
9	Cap nut; G 3/4" x \varnothing 20; width A/F 30 x 14	29 07 203		
10	Hose clip; \varnothing 14 - \varnothing 24	28 02 108		
11	Hose; DN 13.5 x 3.5 x 60	40 02 002		Per metre
12	Dirt trap cpl.	80002153		Incl. items 12.1 - 12.3
12.1	Seal; \varnothing 16 x \varnothing 24 x 3.0	80002241	2	
12.2	Double nipple; G 3/4" x 40; width A/F 30	80002167		
12.3	Dirt trap	80002728		
13	Metal hose; DN 15 x 1500; G 3/4"	29 01 303		Incl. item 13.1
	Metal hose; DN 12 x 1500; G 3/4"; incl. item 13.1	29 01 305		Great Britain only
13.1	Seal; \varnothing 16 x \varnothing 24 x 3.0	80002241	2	
n.p.	Extension hose; 1m	29 01 307		Optional extra
n.p.	Seal; \varnothing 16 x \varnothing 24 x 3.0	80002241		Optional extra
14	Pan-head screw; M 4 x 8	20 10 210		
15	Solenoid valve holder	62001284		
16	Flow controller			Replaced by item 18
17	Dirt trap	31 06 186		
18	Solenoid valve (flow controller 15l); 220-240V;50/60Hz	31 06 180		AquaMatik; incl. item 11
	Solenoid valve (flow controller 15l); 180-220V;50/60Hz	31 06 198		AquaMatik; Japan; incl. item 17
	Solenoid valve (flow controller 5l); 220-240V; 50/60Hz	31 06 184		Tundish; incl. item 17
19	RC element; 0,15 μ F; 3,3k Ω	31 13 114		only with AquaMatik; connect
20	Tab connector	31 12 018	2	parallel to item 18
21	Shaped hose; DN 12.5 x 4	40 03 051		Adapt
	Plastic hose; DN 12.7 x 3.4 x 1000; per metre	29 01 521		Great Britain only
22	Filler plug; G 3/8" x \varnothing 24	62001582		
23	Seal; \varnothing 17 x \varnothing 24 x 2.0	27 09 009		
24	Lock nut; G 3/8"	30 09 200		



17



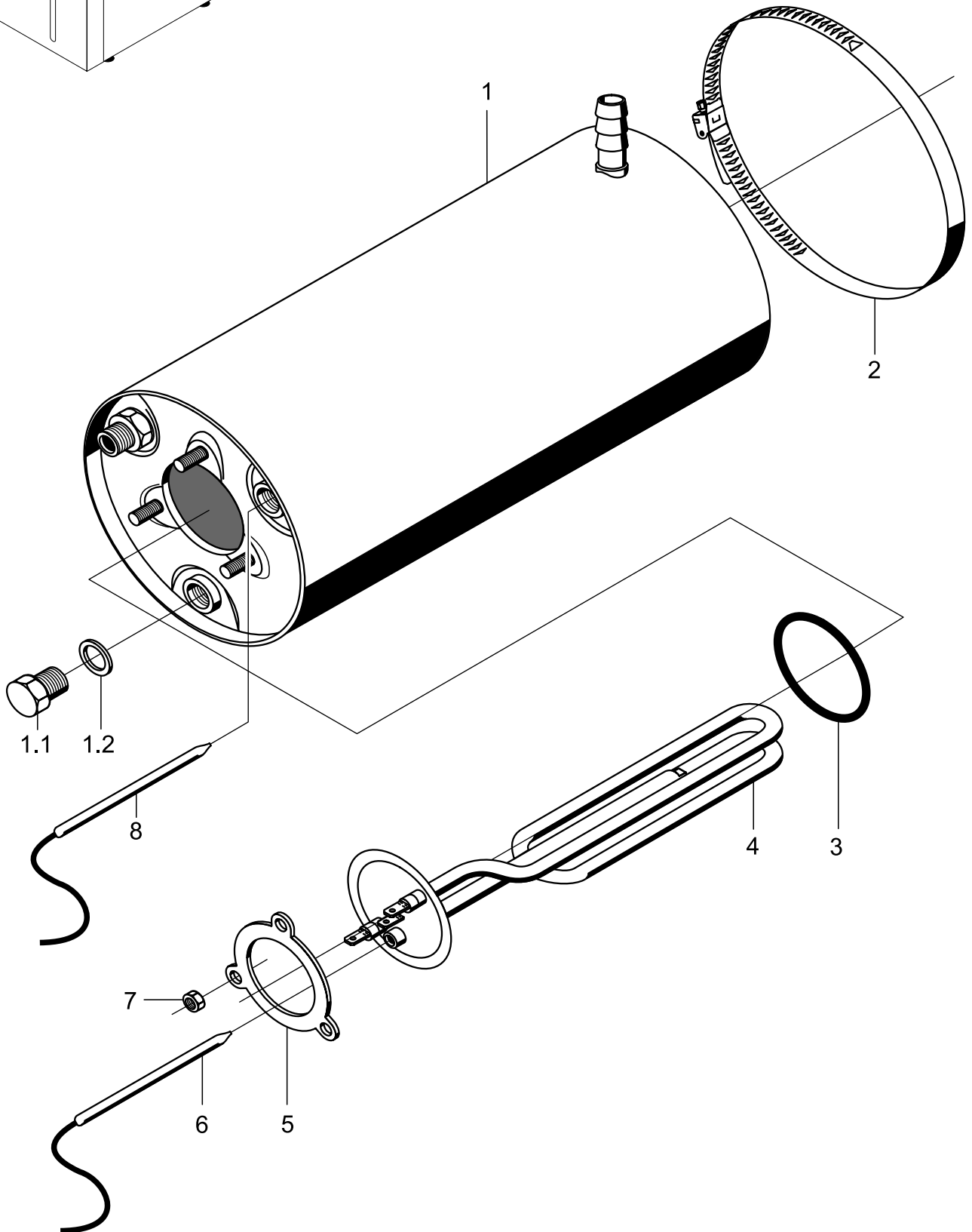
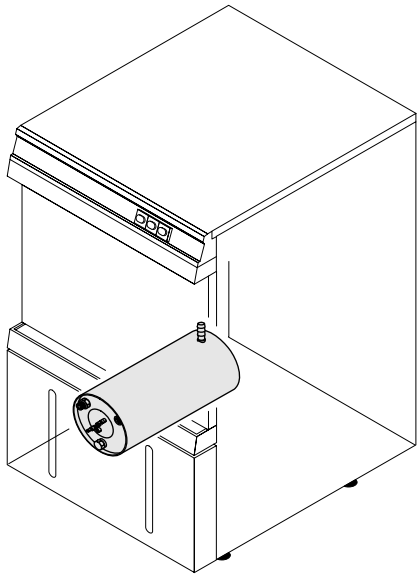




GS24

Wash system II

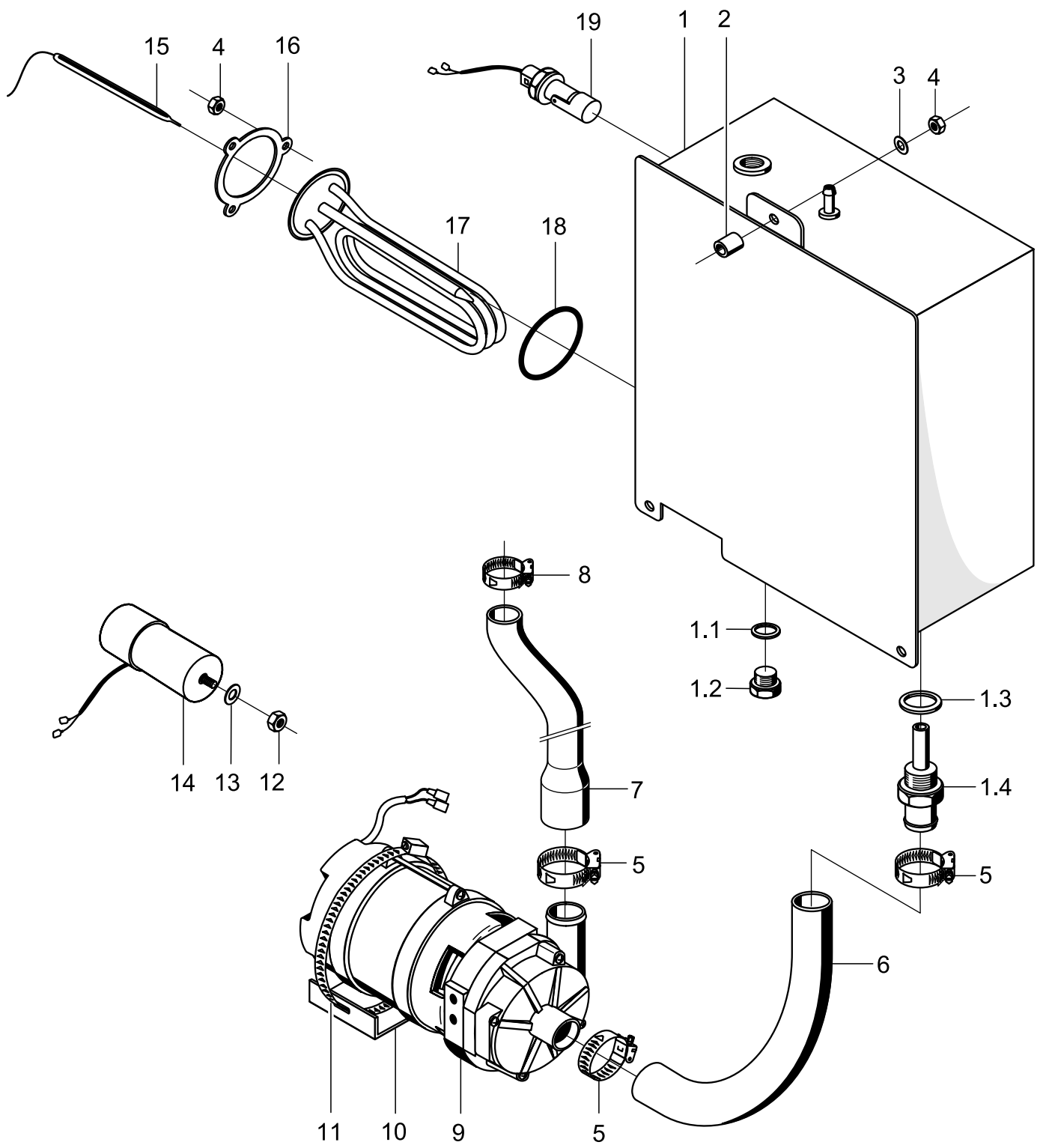
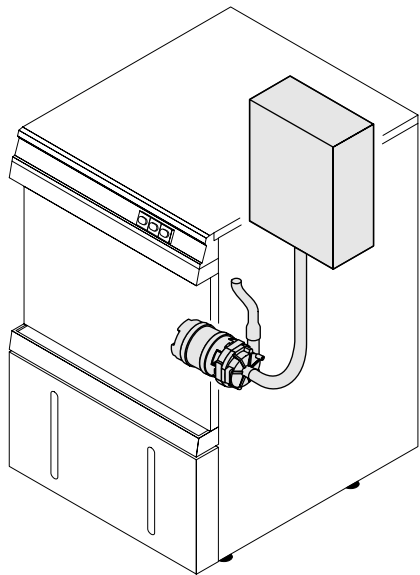
Item	Designation	Part no.	Pc.	Notes
1	Seal; \varnothing 17 x \varnothing 24 x 2.0	62001366	6	
2	Lock nut; G 3/8"	30 09 200	6	
3	Slotted nozzle	62001173	6	
4	Cap nut for nozzle	62001174	6	
5	Upper wash manifold	62001172	2	
6	Hose clip; \varnothing 14 - \varnothing 24	28 02 108		
7	Fabric hose; DN 13 x 3.5 x 130	40 01 030		Per metre
	Fabric hose; DN 13 x 3.5 x 50	40 01 030		AquaMatik, Tundish; per metre
8	Tee for upper wash manifold	62001329		
9	Fabric hose; DN 13 x 3.5 x 275	40 01 030		Per metre
	Fabric hose; DN 13 x 3.5 x 355	40 01 030		AquaMatik, Tundish; per metre
10	Hose clip; \varnothing 24 - \varnothing 36	28 02 111		
11	Fabric hose; DN 25 x 4.5 x 360	40 01 023		Per metre
	Fabric hose; DN 25 x 4.5 x 330	40 01 023		Per metre; AquaMatik / Tundish
12	Hex nut; M 5 self-locking	21 05 302		
13	Sheet-metal screw; B 3.9 x 9.5	20 20 307		
14	Pipe holder support	62001368	2	
15	Pipe holder	62001333		
16	Stud; \varnothing 6 x 38	62001239	2	Up to Machine no.: 351 837
17	End piece	62001152	4	
18	Slotted nozzle	62001153	16	
19	O-ring; \varnothing 18 x 1.5	27 07 039	4	
20	Wash arm, cpl.	62001150	4	incl. item 17, 18
21	Hex nut; M 4 self-locking	21 05 300		
22	Washer; \varnothing 4.3 x \varnothing 8 x 0.5	22 02 302		
23	Manifold bearing	62001354		
24	Bearing bolt for manifold	62001355		
25	Compressed spring	28 04 006		
26	Manifold end piece	62001156		
27	O-ring; \varnothing 42 x 2.5	27 07 035	2	
28	Manifold centre piece	62001154		
29	Manifold inlet	62001155		
30	O-ring; \varnothing 36 x 2	27 07 052		
31	Seal; \varnothing 41 x \varnothing 73.5 x 2.0	62001336		
32	Manifold cross	62001157		



GS24

Rinse I

Item	Designation	Part no.	Pc.	Notes
1	Insulated boiler frame cpl.	62001215		Incl. items 1.1 and 1.2
1.1	Hex-head screw; M 10 x 16	20 01 352		
1.2	Seal; \varnothing 10 x \varnothing 18 x 1.5	27 03 003		
2	Hose clip; \varnothing 122 - \varnothing 142	28 02 305	2	
3	O-ring; \varnothing 46 x 6	27 07 015		
4	Cranked heating element; 5.0 kW; 230/400 V / 3	31 03 030		
	Cranked heating element; 5.0 kW; 240/420 V / 3	31 03 032		
	Cranked heating element; 5.0 kW; 200/346 V / 3	31 03 098		
	Cranked heating element; 2.8 kW; 230 V / 1 / N	31 03 084		
	Cranked heating element; 2.8 kW; 240 V / 1 / N	31 03 033		
	Cranked heating element; 2.8 kW; 200 V / 1 / N	31 03 109		
	Cranked heating element; 2.8 kW; 400 V / 1 / N	31 03 039		
	Cranked heating element; 2.6 kW; 240 V / 1 / N	31 03 111		
	Cranked heating element; 2.2 kW; 230 V / 1 / N	31 03 082		
5	Clamping plate	01 17 003		
6	Safety thermostat; 140°C - 10 K "OFF"	31 25 030		
7	Hex nut; M 5	21 01 303		
8	Thermostat; 1750 lg.	31 25 031		Short actuating shaft

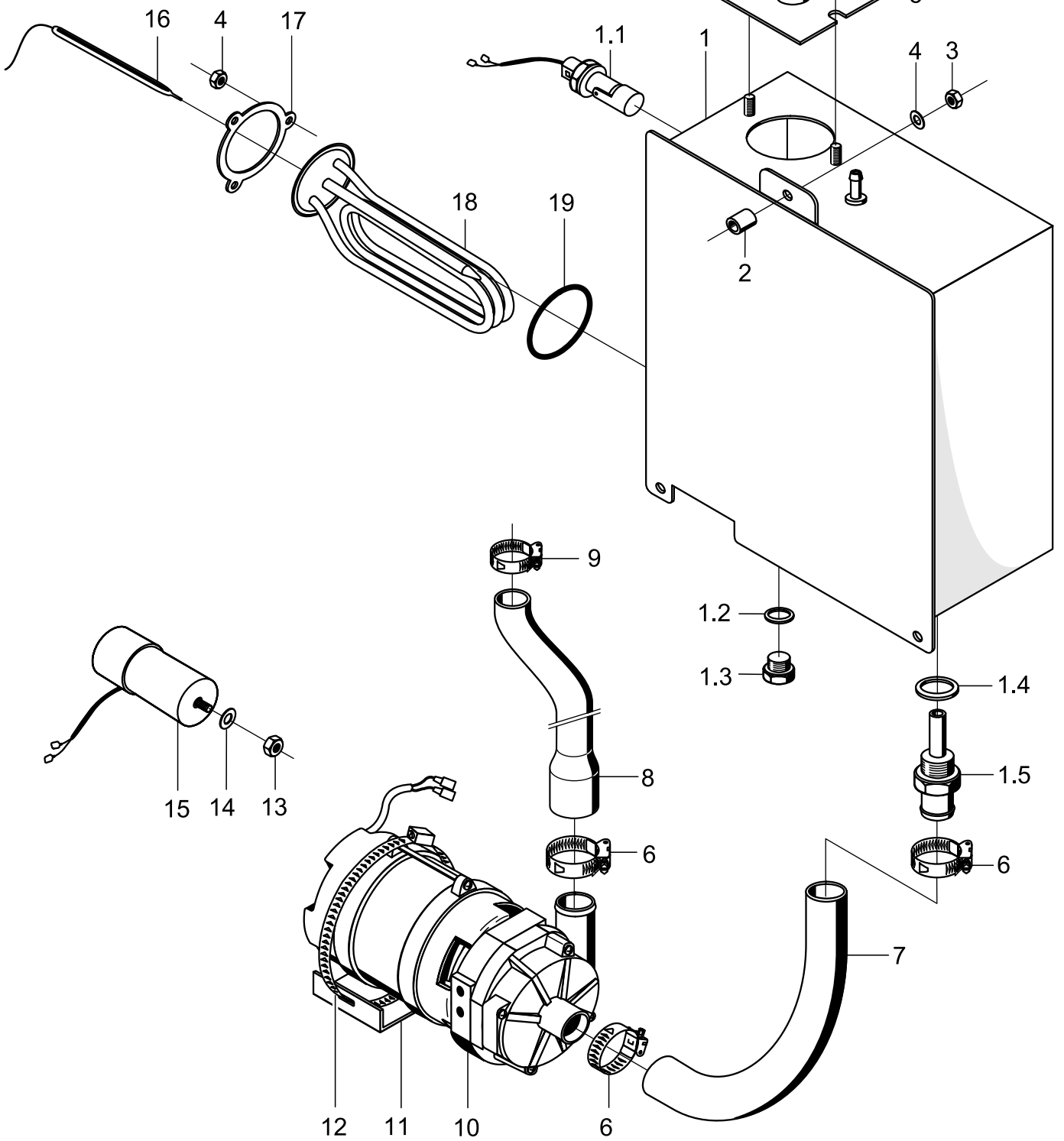
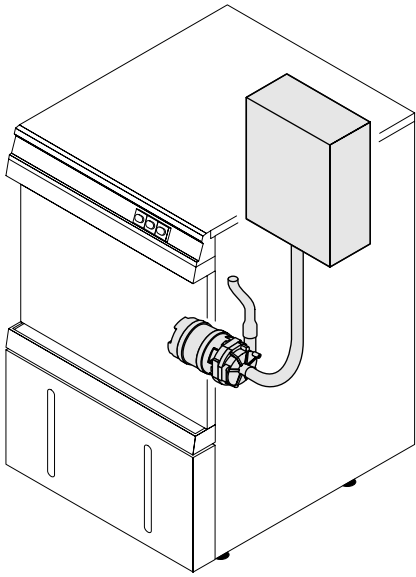


GS 24 - AquaMatik

Machine.: ⇒ 353 914

Rinse II

Item	Designation	Part no.	Pc.	Notes
1	Boiler frame cpl., non-pressurised	62002098		Incl. items 1.1 - 1.4
1.1	Seal; \varnothing 10 x \varnothing 18 x 1.5	27 03 003		
1.2	Hex-head screw; M 10 x 16	20 01 352		
1.3	Seal; \varnothing 21 x \varnothing 28 x 2.0	27 09 011		
1.4	Immersion tube	62002086		
2	Spacer roller; \varnothing 5.3 x \varnothing 12 x 7	22 08 513	3	
3	Washer; \varnothing 5.3 x \varnothing 10.0 x 1,0	22 01 300		
4	Hex nut; M 5 self-locking	21 05 302		
5	Hose clip; \varnothing 24 - 44	28 02 309		
6	Hose; DN 25 x 4.5 x 305	40 01 038		Per metre
7	Shaped hose DN 13/25 x 4.0 x 720	60001606		Cut to size
8	Hose clip; \varnothing 14 - 24	28 02 108		
9	Pump 0.27 kW; 1 x 220 - 240 V 50 Hz	31 02 477		Incl. item 14
	Pump 0.27 kW; 1 x 220 - 240 V 60 Hz	31 02 445		
	Pump 0.27 kW; 1 x 180 - 200 V 50 Hz	31 02 446		
	Pump 0.27 kW; 1 x 180 - 200 V 60 Hz	31 02 447		
10	Pump holder	80001405		
11	Hose clip; \varnothing 92 - \varnothing 112	28 02 125		
n.p.	Deflector plate	62002097		
12	Hex nut; M 8	21 01 305		
13	Spring washer; B8	23 03 301		
14	Capacitor; 5 μ F; 250 V 50/60 Hz	31 13 099		
15	Safety thermostat; 140° C - 10 K "OFF"	31 25 030		
16	Clamping plate, galvanised	01 17 003		
17	Cranked heating element; 5.0 kW; 230/400 V / 3	31 03 030		
	Cranked heating element; 5.0 kW; 240/420 V / 3	31 03 032		
	Cranked heating element; 5.0 kW; 200/346 V / 3	31 03 098		
	Cranked heating element; 2.8 kW; 230 V / 1 / N	31 03 084		
	Cranked heating element; 2.8 kW; 240 V / 1 / N	31 03 033		
	Cranked heating element; 2.8 kW; 200 V / 1 / N	31 03 109		
	Cranked heating element; 2.8 kW; 400 V / 1 / N	31 03 039		
	Cranked heating element; 2.6 kW; 240 V / 1 / N	31 03 111		
	Cranked heating element; 2.2 kW; 230 V / 1 / N	31 03 082		
18	O-ring; 6 x \varnothing 46	27 07 015		
19	Float switch	55 28 255		
n.p.	Seal for float switch	31 26 036		

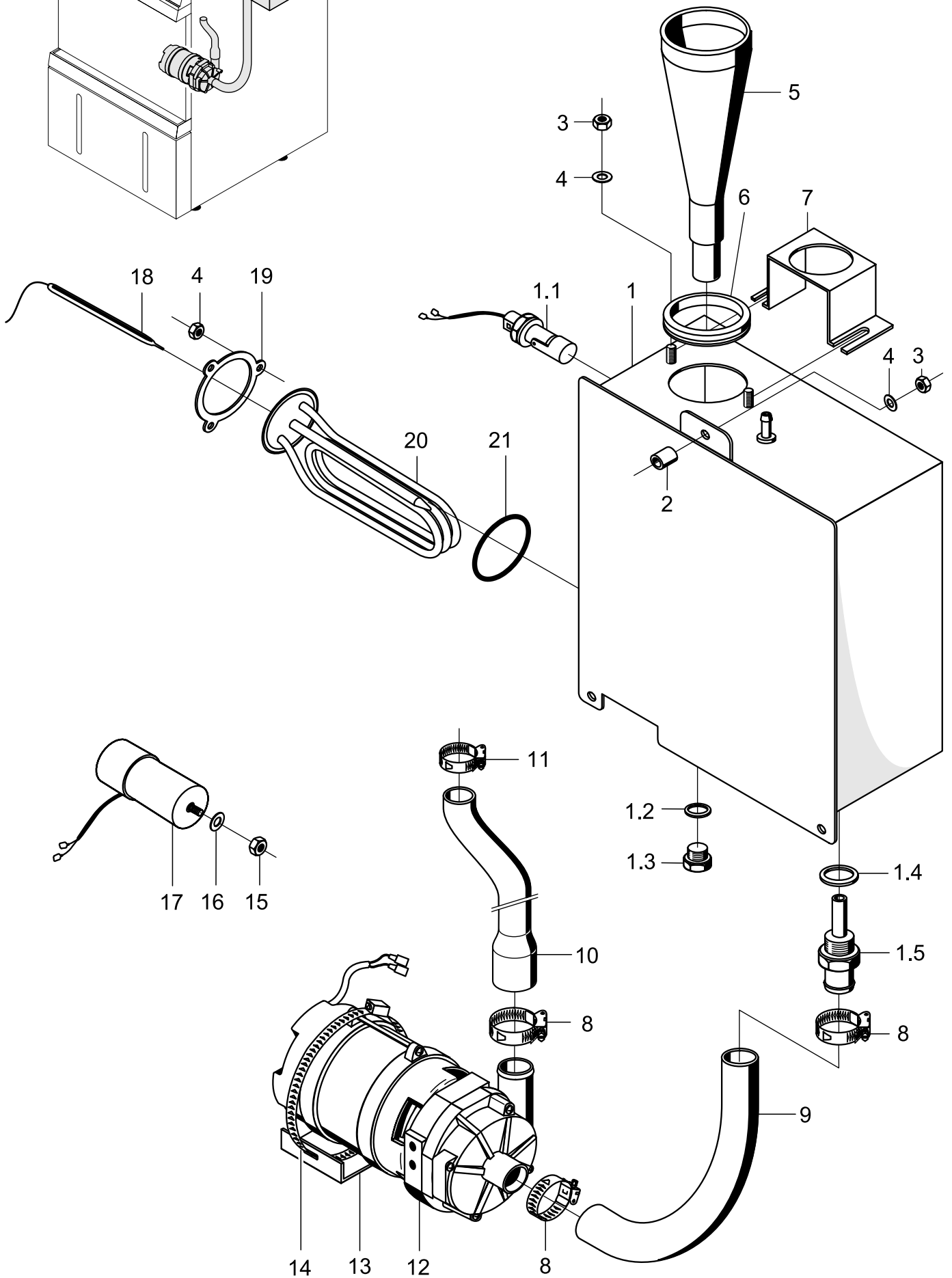
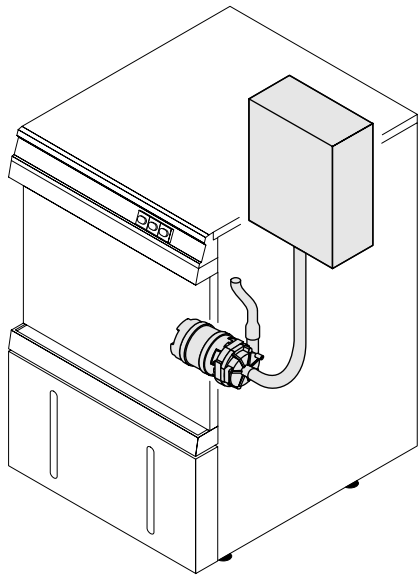


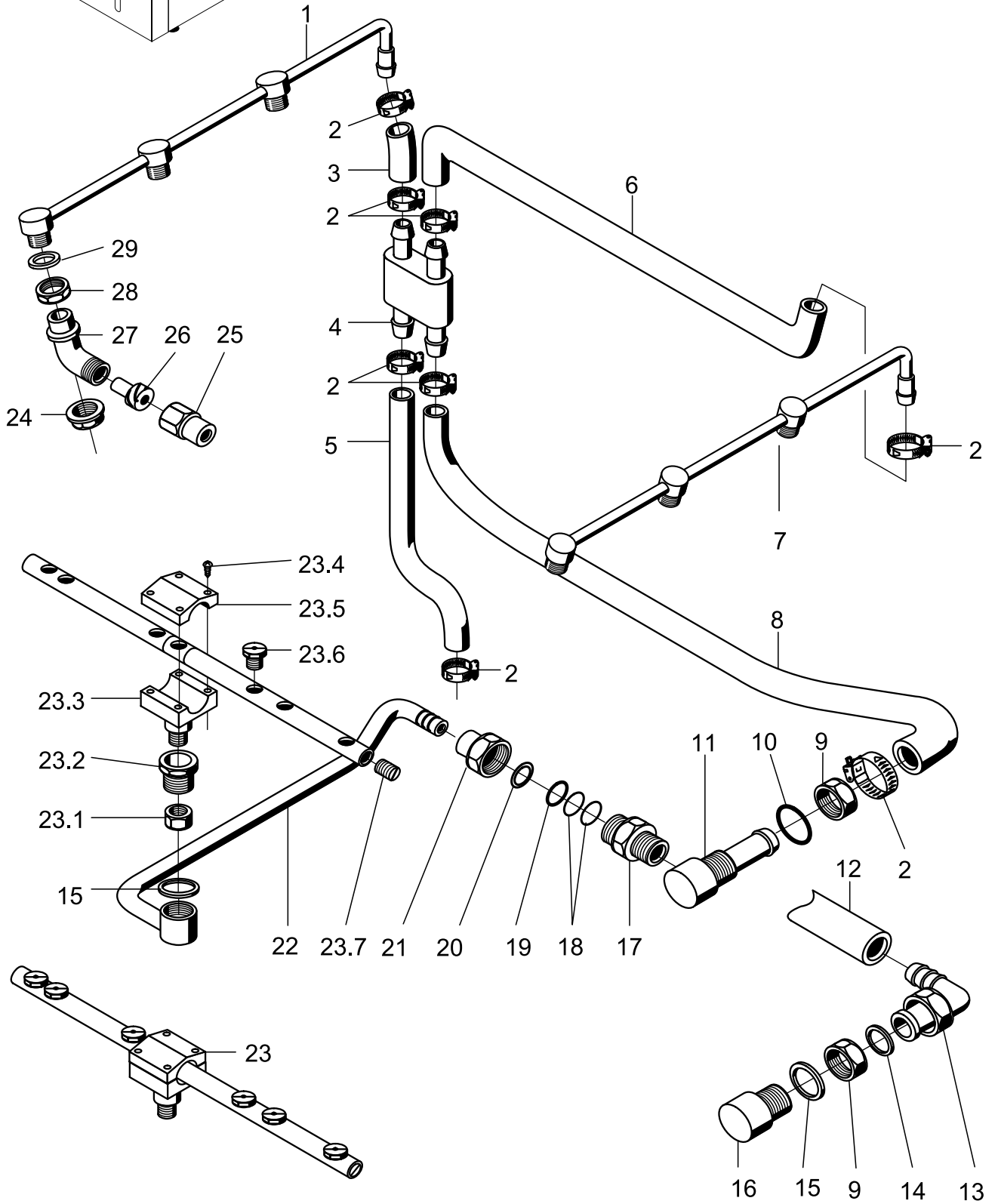
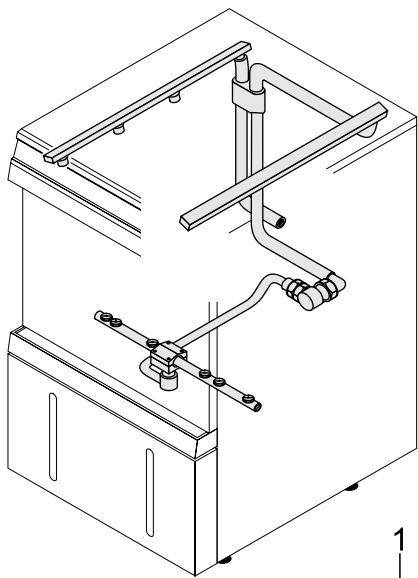
GS 24 - AquaMatik

Machine no.: 353 915 ⇨

Rinse II

Item	Designation	Part no.	Pc.	Notes
1	Boiler frame cpl., non-pressurised	62002166		Incl. items 1.1 - 1.5
1.1	Float switch	55 28 255		
n.p.	Seal for float switch	31 26 036		
1.2	Seal; \varnothing 10 x \varnothing 18 x 1.5	27 03 003		
1.3	Hex-head screw; M 10 x 16	20 01 352		
1.4	Seal; \varnothing 21 x \varnothing 28 x 2.0	27 09 011		
1.5	Immersion tube	62002086		
2	Spacer roller; \varnothing 5.3 x \varnothing 12 x 7	22 08 513	3	
3	Washer; \varnothing 5.3 x \varnothing 10.0 x 1,0	22 01 300		
4	Hex nut; M 5 self-locking	21 05 302		
5	Adapter plate	62002766		
6	Hose clip; \varnothing 24 - \varnothing 44	28 02 309		
7	Hose; DN 25 x 4,5 x 305	40 01 038		Per metre
8	Shaped hose DN 13/25 x 4.0 x 720	60001606		Cut to size
9	Hose clip; \varnothing 14 - \varnothing 24	28 02 108		
10	Pump 0.27 kW; 1 x 220 - 240 V 50 Hz	31 02 477		Incl. item 15
	Pump 0.27 kW; 1 x 220 - 240 V 60 Hz	31 02 445		
	Pump 0.27 kW; 1 x 180 - 200 V 50 Hz	31 02 446		
	Pump 0.27 kW; 1 x 180 - 200 V 60 Hz	31 02 447		
11	Pump holder	80001405		
12	Hose clip \varnothing 92 - \varnothing 112	28 02 125		
n.p.	Deflector plate	62002097		
13	Hex nut; M 8	21 01 305		
14	Spring washer; B8	23 03 301		
15	Capacitor; 5 μ F; 250 V 50/60 Hz	31 13 099		
16	Safety thermostat; 140° C - 10 K "OFF"	31 25 030		
17	Clamping plate, galvanised	01 17 003		
18	Cranked heating element; 5.0 kW; 230/400 V / 3	31 03 030		
	Cranked heating element; 5.0 kW; 240/420 V / 3	31 03 032		
	Cranked heating element; 5.0 kW; 200/346 V / 3	31 03 098		
	Cranked heating element; 2.8 kW; 230 V / 1 / N	31 03 084		
	Cranked heating element; 2.8 kW; 240 V / 1 / N	31 03 033		
	Cranked heating element; 2.8 kW; 200 V / 1 / N	31 03 109		
	Cranked heating element; 2.8 kW; 400 V / 1 / N	31 03 039		
	Cranked heating element; 2.6 kW; 240 V / 1 / N	31 03 111		
	Cranked heating element; 2.2 kW; 230 V / 1 / N	31 03 082		
19	O-ring; 6 x \varnothing 46	27 07 015		

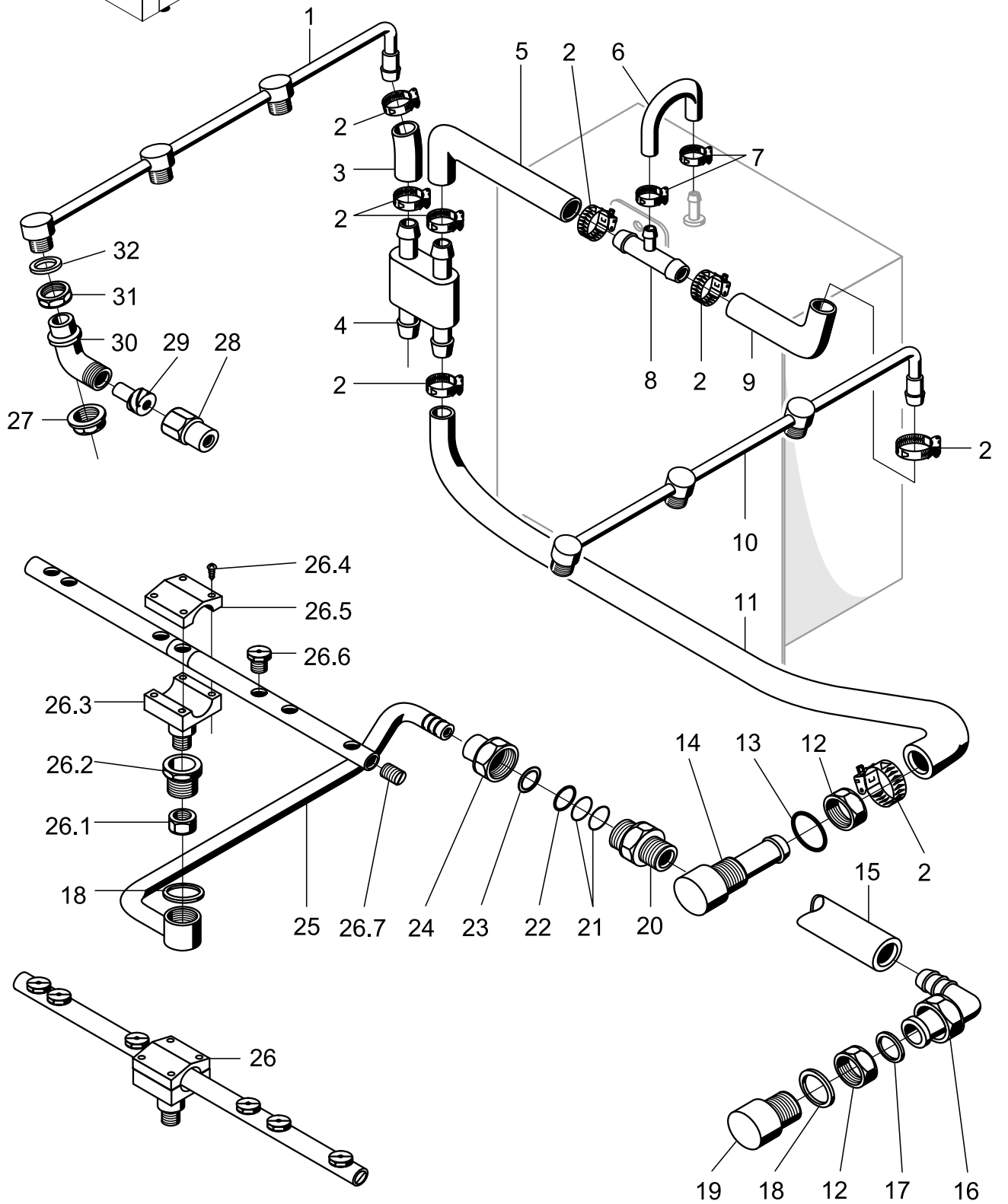
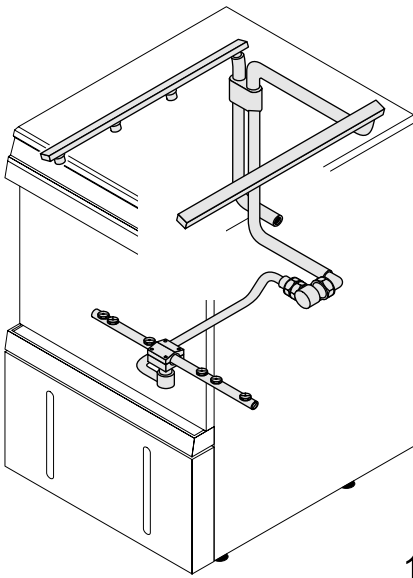




GS24

Rinse IV

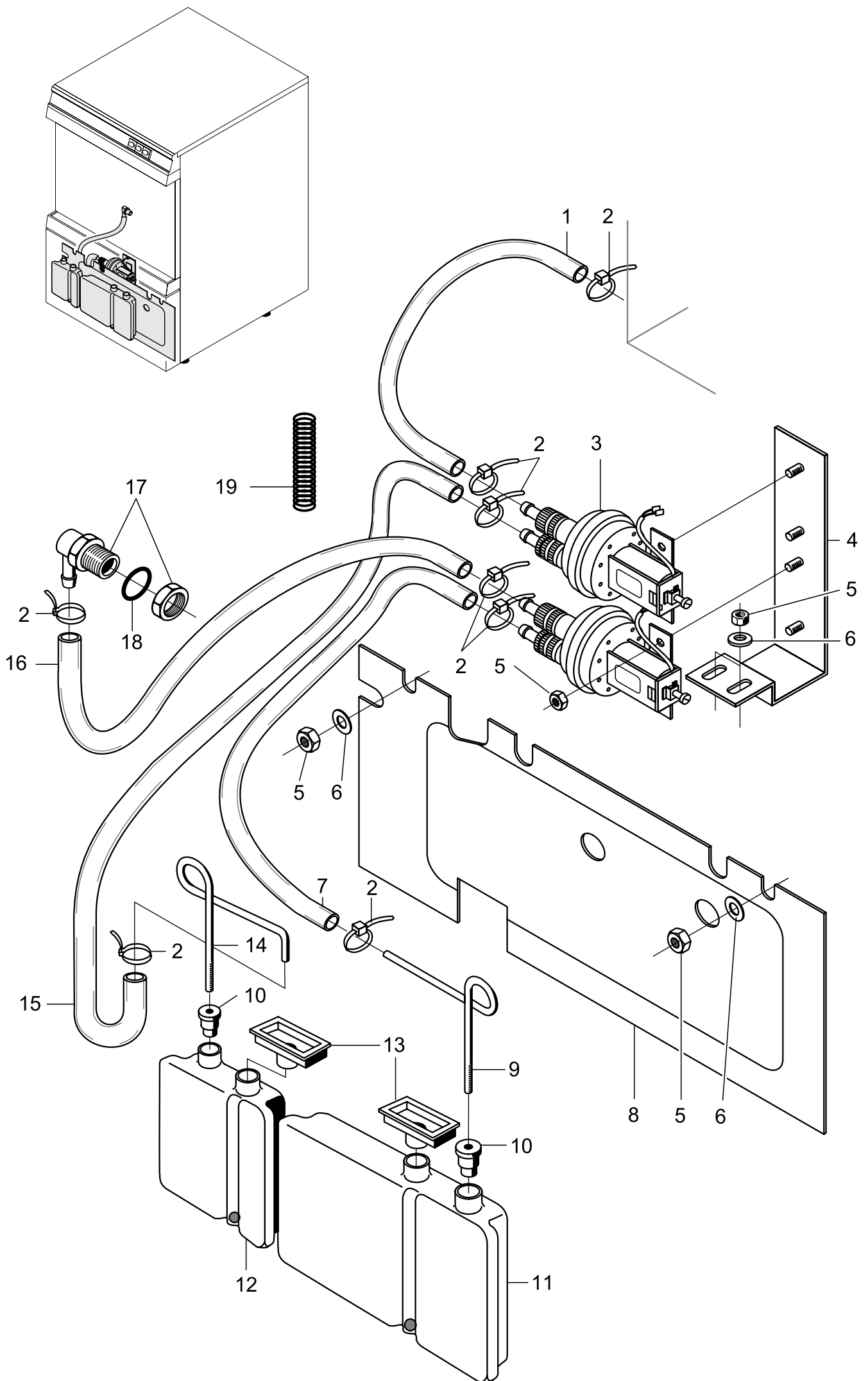
Item	Designation	Part no.	Pc.	Notes
1	Rinse manifold, left	62002644		
2	Hose clip; \varnothing 14 - \varnothing 24	28 02 108		
3	Hose; DN 13.5 x 3.5 x 130 (per metre)	40 02 002		Up to machine no.: 366 337
	Hose; DN 13.5 x 3.5 x 210 (per metre)	40 02 002		From machine no.: 366 338
4	Distributor for rinse manifold	62001391		
5	Hose; DN 13.5 x 3.5 x 360 (per metre)	40 02 002		Up to machine no.: 366 337
	Hose; DN 13.5 x 3.5 x 280 (per metre)	40 02 002		From machine no.: 366 338
6	Hose; DN 13.5 x 3.5; 40 x 312 x 60	62001573		Up to machine no.: 366 337
	Hose; DN 13.5 x 3.5 x 470 (per metre)	40 02 002		From machine no.: 366 338
7	Rinse manifold; right	62002642		
8	Shaped hose; DN 13.5 x 3.5; 40 x 312 x 60	62001573		From machine no.: 340 901 Cut to: 40 x 250
9	Lock nut; 1/2"	30 09 201		
10	O-ring; \varnothing 20 x 3.5	27 07 040		
11	Rinse connection (incl. item 10)	62002404		From machine no.: 340 901 Replacement for 13,14,15,16
12	Hose; DN 13.5 x 3.5 x 250; per metre	40 02 002		Up to machine no.: 340 900
13	Elbow coupling			
14	Seal; \varnothing 13.3 x \varnothing 18 x 2.0			Replaced by item 8 and 11
15	Seal; \varnothing 21 x \varnothing 28 x 2.0	27 09 011		
16	Rinse connection; G 1/2"			Replaced by item 8 and 11
17	Double nipple for rinse connection	62001484		
18	O-ring; \varnothing 8 x 1	27 07 048	2	
19	O-ring; \varnothing 7 x 2.5	27 07 013		
20	Plastic washer; \varnothing 14.7 x \varnothing 12 x 1.5	62001658		
21	Cap nut; G 3/8" x 15	62001485		
22	Stay pipe for rotary arm	62001539		
23	Rotary arm cpl.	62001158		Incl. items 23.1 – 23.7
23.1	Hex nut; M 10 x 1 x 5	62001401		
23.2	Rotary arm bearing	62001486		
23.3	Rotary arm head - bottom part	62001159		
23.4	Sheet-metal screw; B 2.9 x 13	20 20 302		
23.5	Rotary arm head - upper part	62001160		
23.6	Flat jet	29 10 312	6	
23.7	Grub screw; M 9 x 6	29 10 238	2	
24	Cap nut for nozzle	62001174	6	
25	Spray nozzle cap	65002754	6	
26	Spray nozzle swirl device	65002755	6	
27	Rinse nozzle adapter	62001176	6	
28	Lock nut; G 3/8"	30 09 200	6	
29	Seal; \varnothing 17 x \varnothing 24 x 2.0	62001366	6	



GS24 - AquaMatik / Tundish

Rinse V

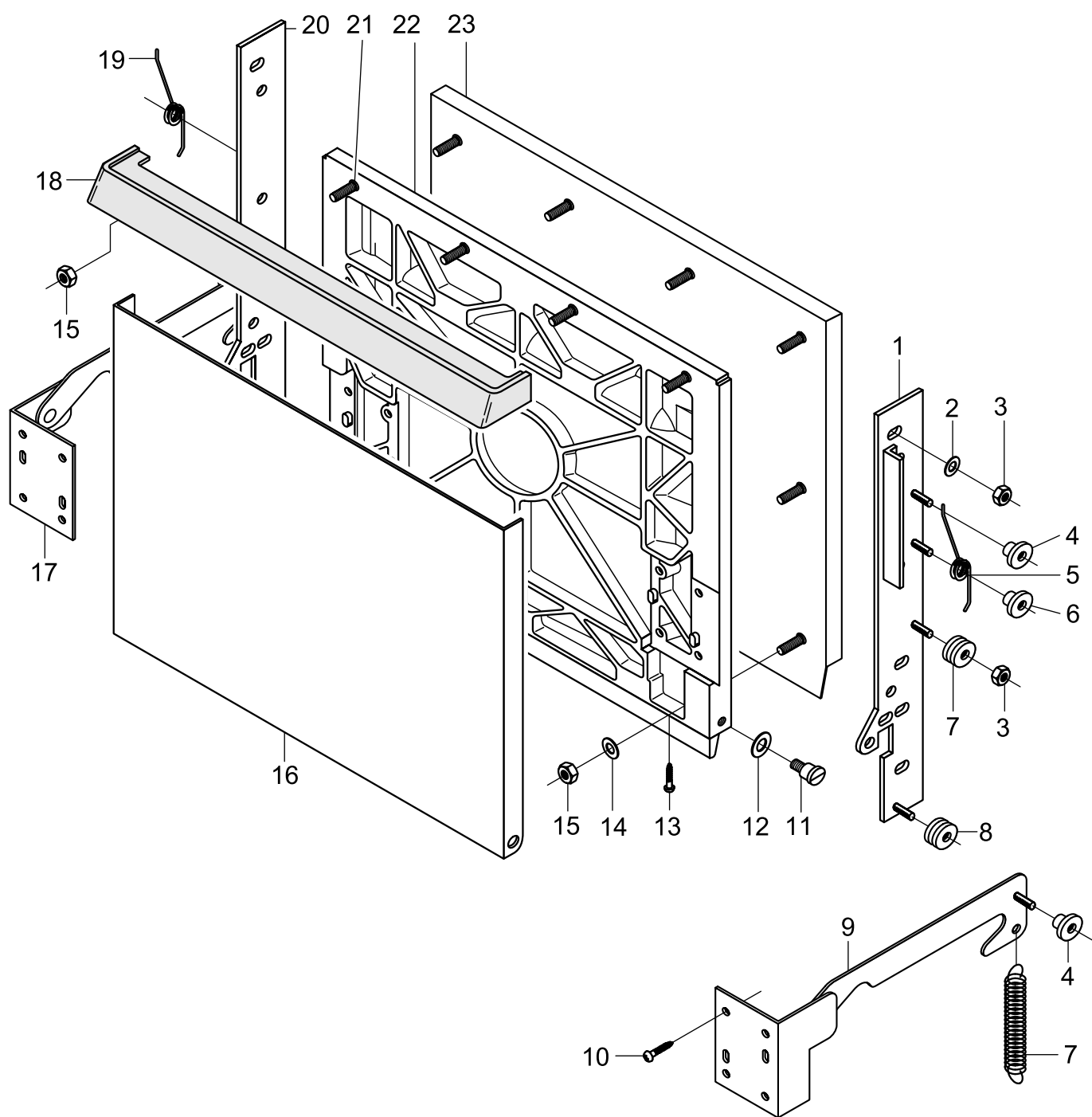
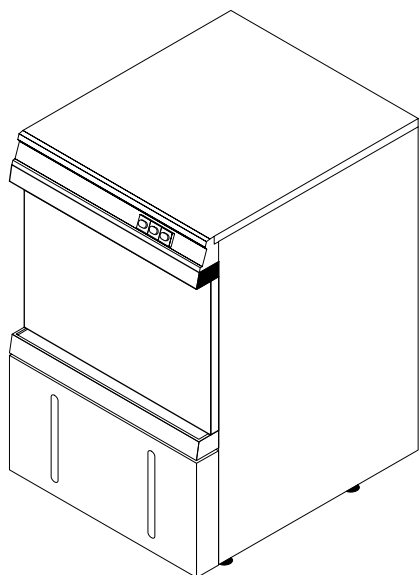
Item	Designation	Part no.	Pc.	Notes
1	Rinse manifold; left	62002644		
2	Hose clip; \varnothing 14 - \varnothing 24	28 02 108		
3	Hose; DN 13.5 x 3.5 x 90	62002066		Made from: 40 03 050
4	Distributor for rinse manifold	62001391		
5	Shaped hose; DN 13.5 x 3.5; 40 x 230	62002068		Made from: 62001573
6	Hose; DN 5 x 1.5 x 200	40 01 037		Per metre
7	Hose clip; \varnothing 8 - \varnothing 12	28 02 102		
8	Tee with diffuser	35 01 087		
9	Shaped hose; DN 13.5 x 3.5; 60 x 92	62002070		Made from: 62001573
10	Rinse manifold; right	62002642		
11	Shaped hose; DN 13.5 x 3.5 x 40 x 312 x 60	62001573		From machine no.: 340 901 Cut to: 40 x 250
12	Lock nut; 1/2"	30 09 201		
13	O-ring; \varnothing 20 x 3.5	27 07 040		
14	Rinse connection (incl. item 13)	62002831		From machine no.: 340 901 Replacement for 16, 17 and 19
15	Hose; DN 13.5 x 3.5 x 250; per metre	40 02 002		Up to machine no.: 340 900
16	Elbow coupling	29 06 238		Replaced by item 11 and 14
17	Seal; \varnothing 13.3 x \varnothing 18 x 2.0	27 09 012		
18	Seal; \varnothing 21 x \varnothing 28 x 2.0	27 09 011		
19	Rinse connection; G 1/2"	62001483		
20	Double nipple; G 3/8" x 26; SW 17	62001484		
21	O-ring; \varnothing 8 x 1	27 07 048	2	
22	O-ring; \varnothing 7 x 2.5	27 07 013		
23	Plastic washer; \varnothing 14.7 x \varnothing 12 x 1.5	62001658		
24	Cap nut; G 3/8" x 15	62001485		
25	Stay pipe for rotary arm	62001539		
26	Rotary arm cpl.	62001158		Incl. item 26.1 – 26.7
26.1	Hex nut; M 10 x 1 x 5	62001401		
26.2	Rotary arm bearing	62001486		
26.3	Rotary arm head - bottom part	62001159		
26.4	Sheet-metal screw; B 2.9 x 13	20 20 302		
26.5	Rotary arm head - upper part	62001160		
26.6	Flat jet	29 10 312	6	
26.7	Grub screw; M 9 x 6	29 10 238		
27	Cap nut of nozzle	62001174	6	
28	Spray nozzle cap	65002754	6	
29	Spray nozzle swirl device	65002755	6	
30	Rinse nozzle adapter	62001176	6	
31	Lock nut; G 3/8"	30 09 200	6	
32	Seal; \varnothing 17 x \varnothing 24 x 2.0	62001366	6	

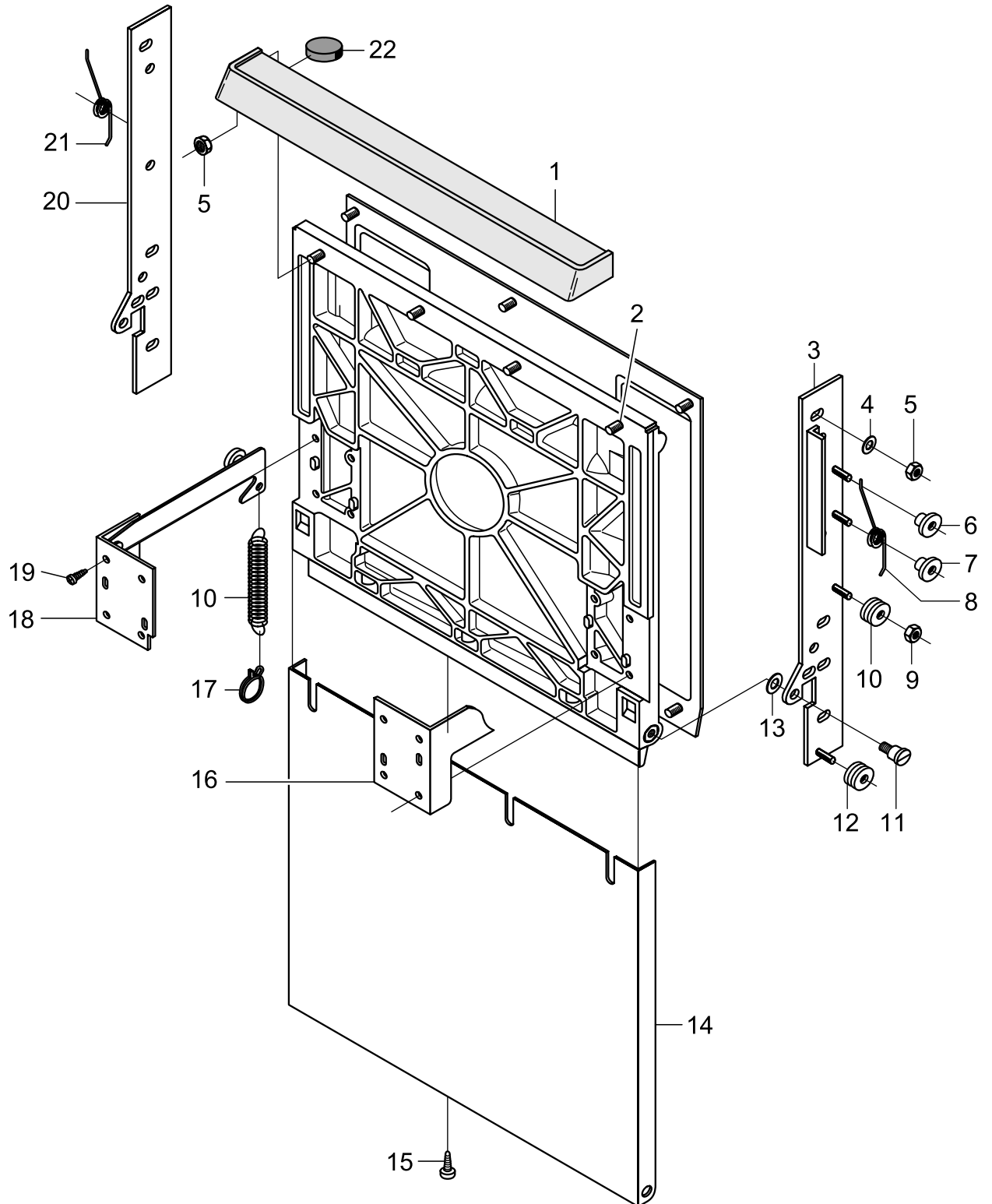
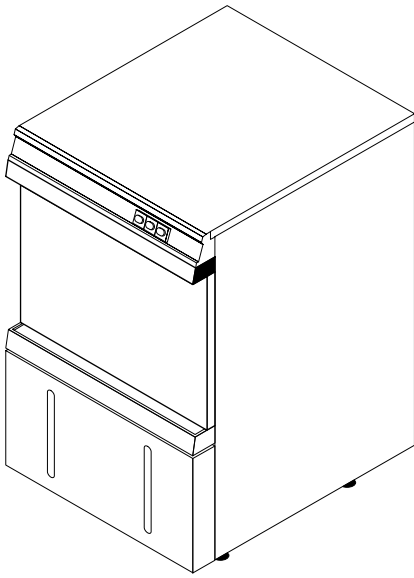


GS24

Dosing

Item	Designation	Part no.	Pc.	Notes
1	Hose; DN 5 x 1.5 x 300	40 01 024		Per metre
2	Cable binder; 162 x 2.5	31 20 014		
3	Dispenser; ELT 10 GS cpl. left	80000554	2	
4	Dispenser holder	62001314		
5	Hex nut; M 5 self-locking	21 01 302		
6	Washer; \varnothing 5.3 x \varnothing 12.0 x 0.8	22 02 213		
7	Hose; DN 5 x 1.5 x 370	40 01 024		Per metre
8	Shock hazard protection	62001761		
9	Detergent intake pipe	62001300		
10	Gauge plug	40 06 011	2	
11	Detergent tank	62001292		
12	Rinse aid tank	62001304		
13	Filling pocket	62001331	2	
14	Rinse aid intake pipe	62002449		
15	Hose; DN 5 x 1.5 x 600	40 01 024		Per metre
16	Hose; DN 5 x 1.5 x 350	40 01 024		Per metre
17	Set dispensing nipple for detergent	62002869		incl. items 17.1, 17.2
17.1	Back-up ring; \varnothing 18 x 5	62002874		
17.2	O-ring; \varnothing 10 x 2.5	27 07 030		
	Seal; \varnothing 10 x \varnothing 18 x 1.5			replaced by item 17
18	Spring; 0.8 x 10 x 280	62002419	4	For items 1, 7, 15 and 16



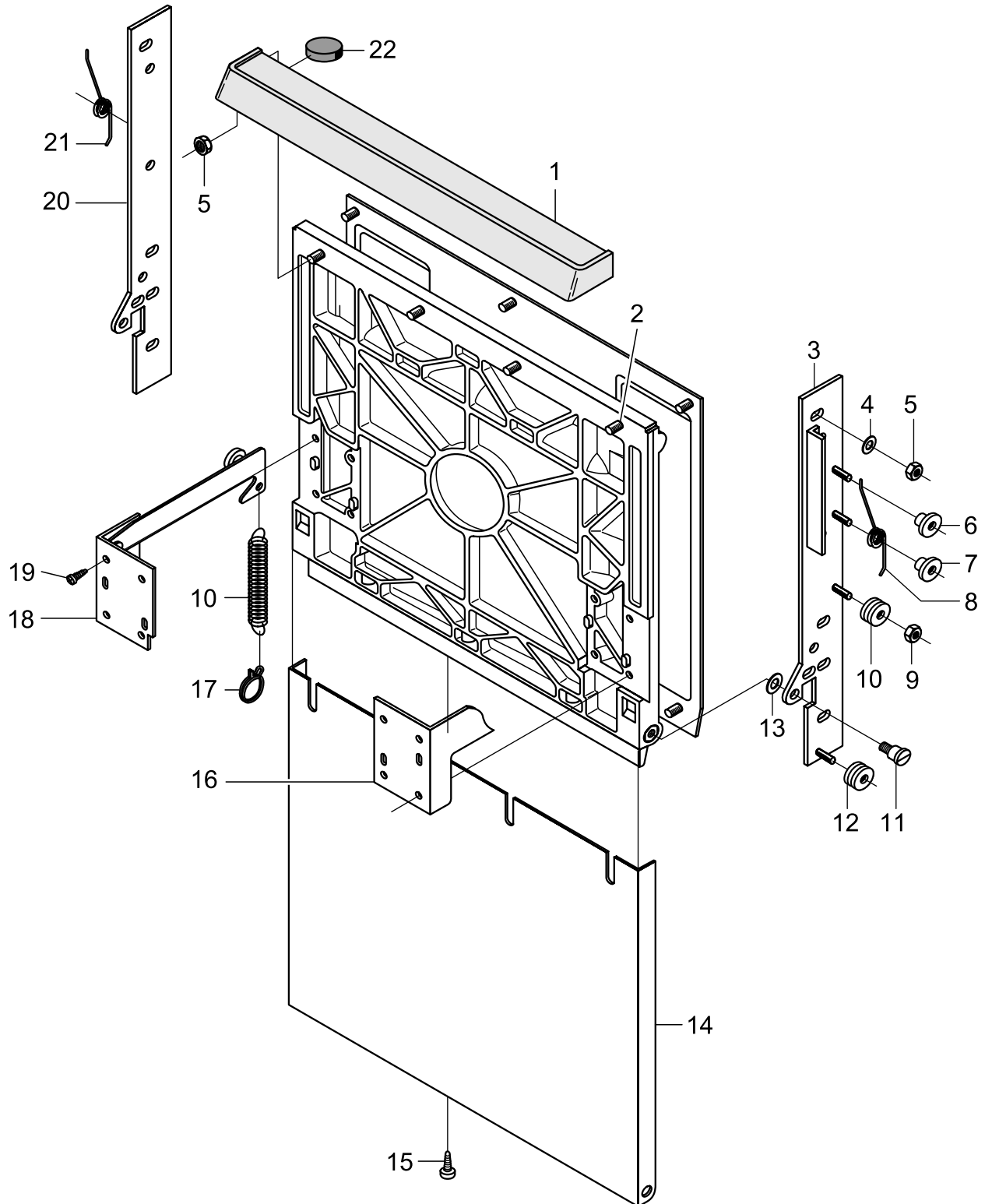
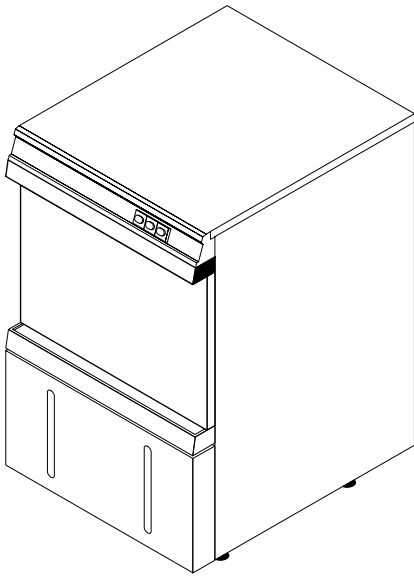


GS24

Machine no.: 180 735⇒

Door

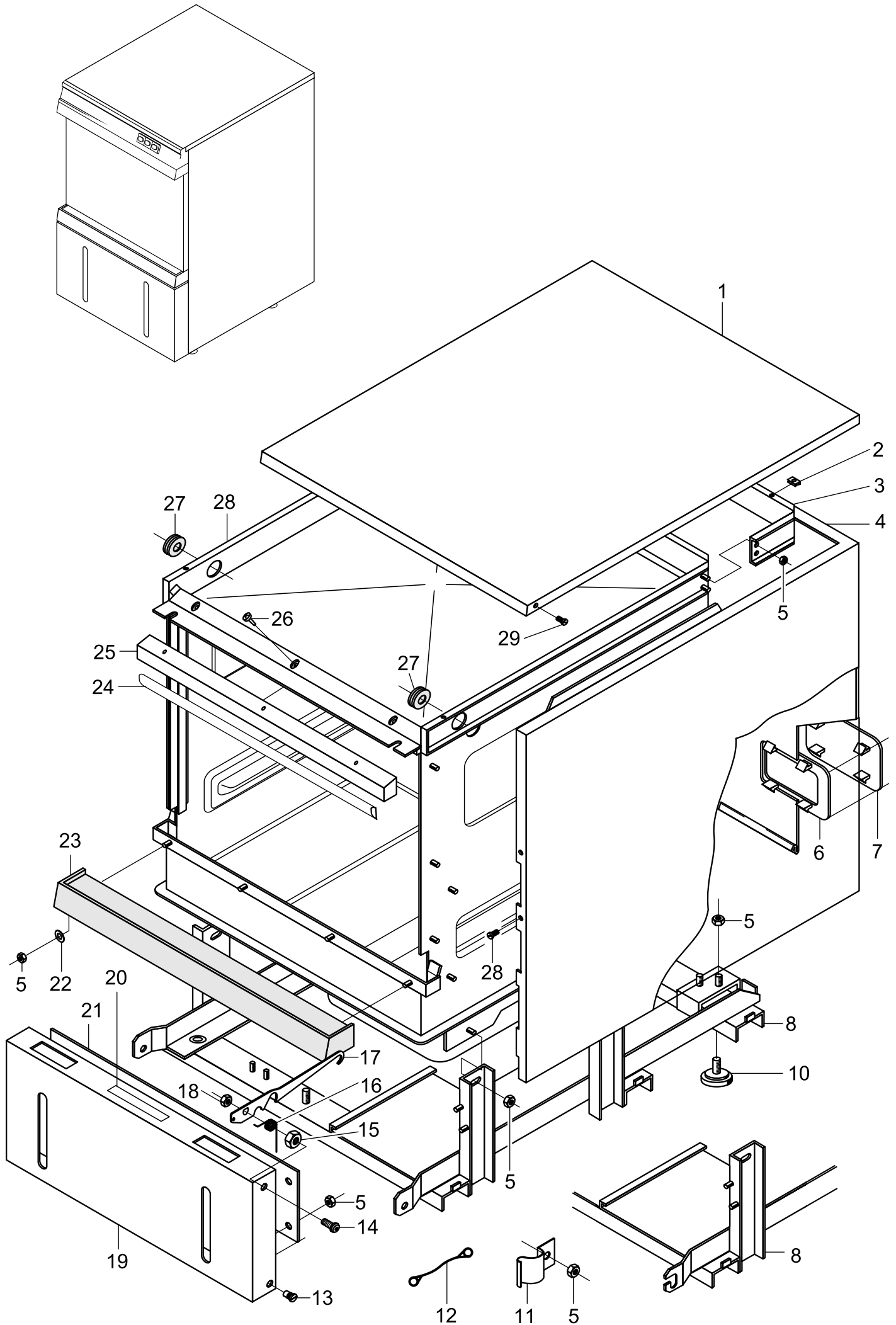
Item	Designation	Part no.	Pc.	Notes
1	Door handle with magnet	55 15 164		Incl. item 22
2	Grub screw; M 4 x 16	20 30 306		
3	Door suspension; right	62001241		
n.p.	Repair kit door suspension	55 28 168		If stud for door lever roller is broken
4	Washer; \varnothing 5.3 x \varnothing 10.0 x 1.0	22 01 300		
5	Hex nut; M 4 self-locking	21 05 300		
6	Buffer for torsion spring	62001433	2	
7	Pivot bearing for torsion spring	62001191	2	
8	Torsion spring; right	62001189		
9	Hex nut; M 4 self-locking	21 05 300		Up to machine no.: 351 177
	Lock washer; \varnothing 6 x 0.7	23 10 304		From machine no.: 351 178
10	Conversion door lever rollers	55 28 192		Incl. lock washer 23 10 304
11	Door bearing bolt; M 8 x 28	62001729	2	
12	Door lever roller	62002546	2	Up to machine no.: 231 824 order pod 62002547 too
13	Washer; \varnothing 6.4 x \varnothing 12.5 x 1.6	22 01 500		
14	Outer door panel	62001725		
15	Sheet-metal screw; 3.9 x 9.5	20 20 307		
16	Door mounting; right	62001374		
17	Wire hose clip; \varnothing 9 / T = \varnothing 1	28 02 133		
18	Door mounting; left	62001373		
19	PT screw; 50 x 16	20 17 301		
20	Door suspension; left	62001240		
n.p.	Repair kit door suspension	55 28 168		If stud for door lever roller is broken
21	Torsion spring; left	62001190		
22	Magnet; \varnothing 10 x 10	31 24 191		From machine no.: 231 801
n.p.	Door cpl.	62001726		Incl. items 1, 2, 5, 14-16, 18,19



GS24

Panelling, base frame and tank

Item	Designation	Part no.	Pc.	Notes
1	Cover plate	62002272		
	Cover plate	62002340		AquaMatik, Tundish
2	Sheet-metal nut; B 3.9	21 17 002		
3	Auxiliary frame for housing	62001464		AquaMatik, Tundish
4	Housing panelling (one part); up to machine no.: 231 824	62001305		
	Housing panelling (one part); up to machine no.: 231 824	62002110		AquaMatik, Tundish
n.p.	Panel left; from machine no.: 231 825	62002217		
	Panel left; from machine no.: 231 825	62002258		AquaMatik, Tundish
n.p.	Panel right; from machine no.: 231 825	62002218		
	Panel right; from machine no.: 231 825	62002259		AquaMatik, Tundish
n.p.	Panel rear; from machine no.: 231 825	62002219		
5	Hex nut; M 5 self-locking	21 05 302		
6	Edge protection	62001437		
7	Cover for installation opening (option)	62001404		For bottom connections
8	Base frame	62001271		Up to machine no.: 231 824
9	Base frame	62002062		From machine no.: 231 825
10	Adjusting plate; M 8 x 20	62002442	4	
11	Closing spring	62002187	2	Up to machine no.: 231 825
12	Anti-tilt device	28 06 007		
13	Door bearing bolt	62001729		Up to machine no. 231 824
14	Bearing bolt for locking bar; M 8 x 21	62001461		
15	Hex nut; M 8 self-locking	21 05 306		
16	Locking bar spring	62001458		
17	Locking bar for detergent flap	62001457		
18	Hex nut; M 6 self-locking	21 05 304		
19	Front panel	62001290		
	Front panel	62001621		From machine no.: 231 825
20	Information sign "Filling"	62001382		
21	Retaining plate	62001460		Up to machine no.: 231 824
22	Washer; \varnothing 5.3 x \varnothing 12 x 0.8	22 02 213		
23	Cover for water channel; plastic	62001419		Up to machine no.: 201 048
	Cover for water channel; plastic	62001617		From machine no.: 201 049
	Cover for water channel; stainless steel	62002443		From machine no.: 351 504
24	Profile gasket; 10 x 4,0 x 450	62001618		Per metre
25	Door frame profile; top	62001270		
26	PT screw; KB 30 x 8	20 17 303		
27	Bush; \varnothing 5 x 1.5 x 6.5 x 14.5	31 10 105		
28	Housing	62002490		
	Housing	62002162		AquaMatik, Tundish
29	Oval-head countersunk screw; M 4 x 12	20 12 315		Up to machine no.: 342 321
	Sheet-metal screw; B 3.9 x 13	20 20 310		

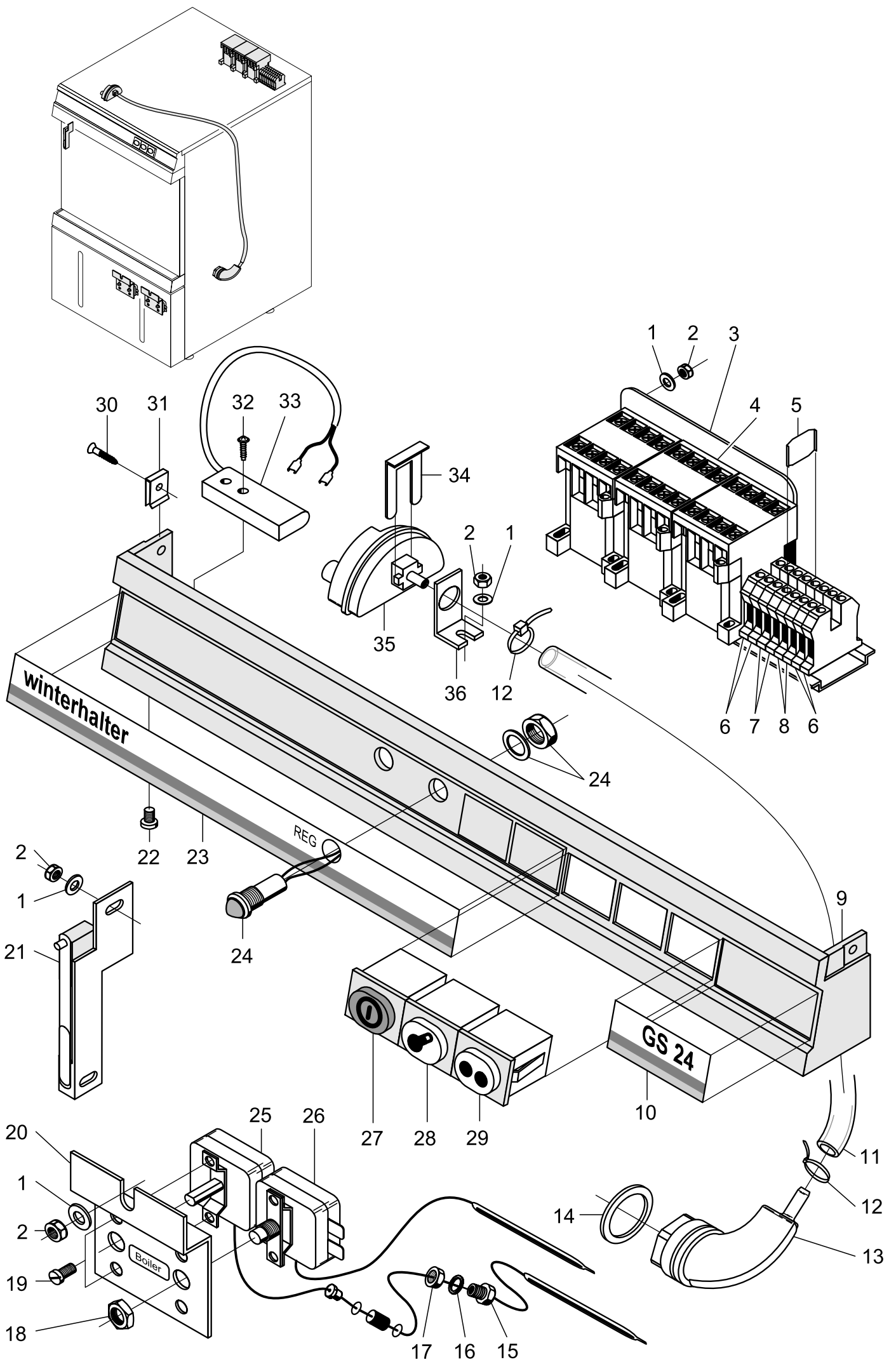


GS24

Machine no.: ⇨ 215 150

Electrical parts I

Item	Designation	Part no.	Pc.	Notes
1	Miniature PE terminal	31 09 101		Green-yellow
2	Miniature terminal	31 09 102		Grey
3	Miniature terminal	31 09 103		Blue
4	Cable gland; PG 9	31 10 042		
5	Hex nut; PG 9	31 10 043		
6	Pan-head screw; M 4 x 8	20 10 309		
7	Hex nut; M 4	21 01 302		
8	Mounting plate	62001516		
9	Miniature contactor; 230 V 50/60 Hz	31 04 098		
	Contactor LS 07	31 04 142	3	Japan
10	Clamping spring for level controller	31 26 001		
11	Level controller; 85/55 ± 5; 16 A 250 V	31 26 029		Violet-blue 50-60 Hz
12	Level controller holder	62001350		
13	Cable binder	31 20 015		
14	Fabric hose; DN 5 x 1.5 x 1540	41 01 024		Per metre
15	Air chamber	55 04 030		Incl. item 15.1
15.1	Seal; ø 26 x ø 36 x 2.0	27 01 003		
16	Switch panel	55 19 101		Incl. items 17, 23, 36, 37
17	Panel sign; "GS 24"	28 03 267		
18	Pushbutton	31 24 130		PROGRAMME I; white
19	Lamp; 220 V	31 08 116		White; oval
20	Pushbutton switch	31 24 185		ON - Off
21	LED; red 12 V	31 08 111		REG
n.p.	LED; yellow 12 V	31 08 112		DOS
22	Oval head screw; M 4 x 8	20 10 310		
23	Panel sign; "Winterhalter"	28 03 266		Without hole
	Panel sign; "Winterhalter"	62002409		1 hole - "REG"
	Panel sign; "Winterhalter"	62001652		2 holes - "REG" and "DOS"
24	Stuffing box for thermostat M 14 x 1	31 25 001		
25	Seal; ø 14.2 x ø 20 x 2.0	27 09 036		Thermostat tank
26	Hex nut; M 14 x 1	31 25 002		
27	Thermostat holder	62001372		Tank
28	Tank thermostat	31 25 023		Incl. item 28.1
28.1	Stuffing box gland	31 25 012		
29	Thermostat; 1750 lg.	31 25 010		Boiler; incl. item 29.1
29.1	Stuffing box gland	31 25 012		
30	Thermostat holder	62001285		Boiler
31	Safety thermostat; ON 89°C; OFF 93°C	31 25 022		
32	Insulated hose; ø 25	31 14 025		
33	Bracket for safety thermostat	62001583		
34	Door limit switch	62002770		Up to machine no.: 201 048
	Door limit switch	62001349		From machine no.: 201 049 up to machine no.: 231 800
35	Distributor strip	31 09 011		
36	Sheet-metal screw; St 3.9 x 13	20 20 310		
37	Sheet-metal nut; B 3,9	21 17 303		

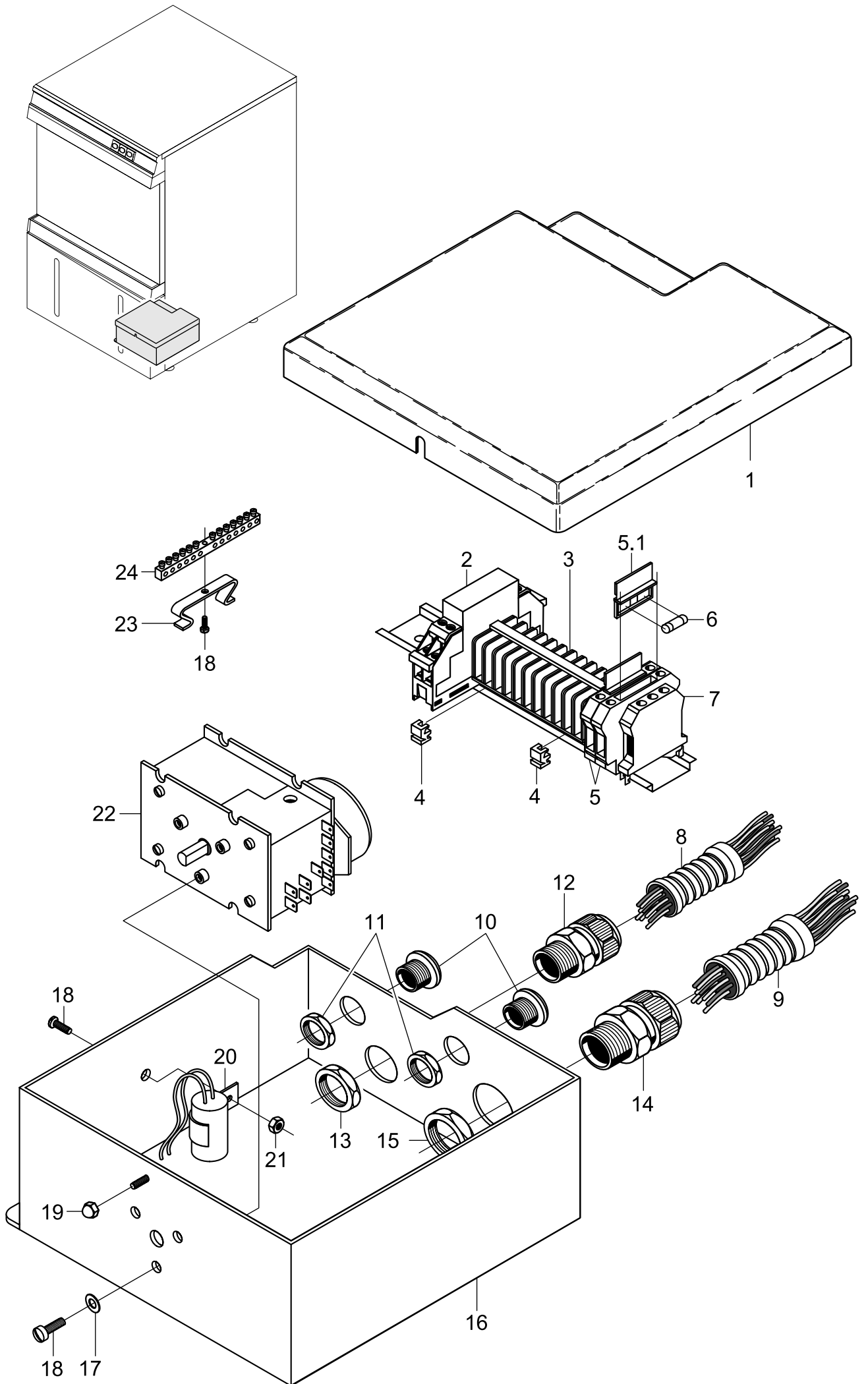


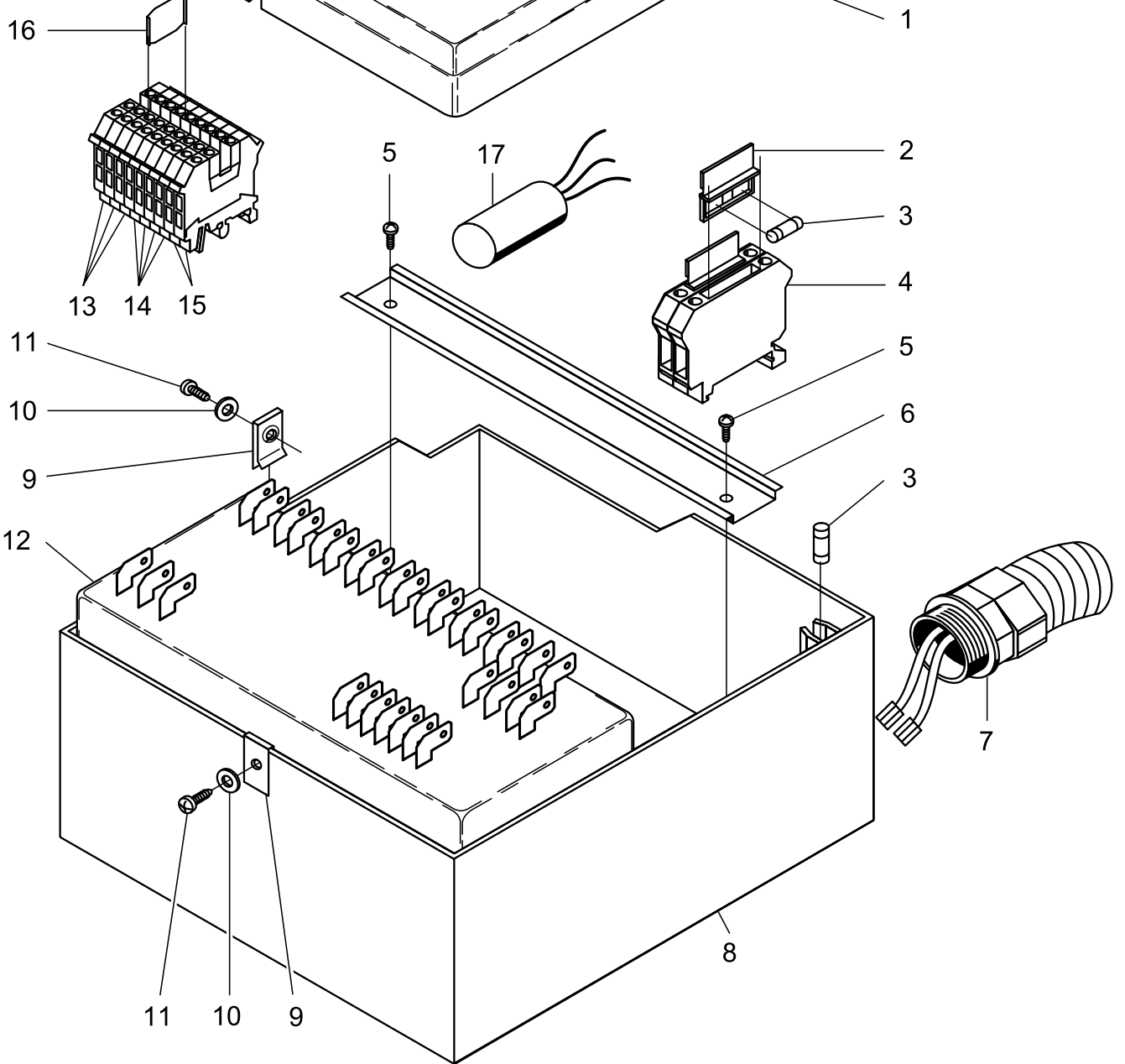
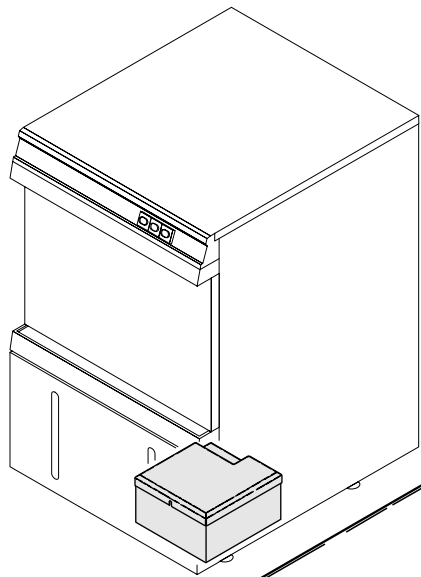
GS24

Machine no.: 215 151 ⇒

Electrical parts I

Item	Designation	Part no.	Pc.	Notes
1	Washer \varnothing 5.3 x \varnothing 12.0 x 0.8	22 02 213		
2	Hex nut; M 5 self-locking	21 05 302		
3	Snap-on rail	62001753		
4	Miniature contactor; 220-140 V; 50/60 Hz	31 04 098	3	
	Contactor; LS 07	31 04 142	3	Japan
5	Isolating disk; TS-K	31 09 066		
6	Universal terminal; green/yellow USLKG 4	31 09 064	4	
7	Universal terminal; grey UK 5	31 09 049	4	
8	Universal terminal; blue UK 5	31 09 050		
n.p.	Fixed bridge; FB 2-6	31 09 126		Two-pole
9	Switch panel	55 19 101		Incl. items 10, 23, 30, 31
10	Panel sign; "GS 24"	28 03 267		
11	Hose; DN 5 x 1.5 x 1080	40 01 024		Per metre
12	Cable binder	31 20 014		
13	Air chamber	55 04 030		
14	Seal; \varnothing 26 x \varnothing 36 x 2.0	27 01 003		
15	Stuffing box for thermostat; M 14 x 1	31 25 001		For tank thermostat
16	Seal; \varnothing 14.2 x \varnothing 20 x 2.0	27 09 036		
17	Hex nut; M 14 x 1	31 25 002		
18	Hex nut; M 8 self-locking	21 05 306		
19	Pan-head screw; M 4 x 6	20 10 309		
20	Thermostat holder	62001741	2	
21	Door limit switch	62001349		From 201 049 until 231 800
	Door limit switch	62002770		up to 201 048
22	Oval-head screw; M 4 x 8	20 10 310		
23	Panel sign; "Winterhalter"	28 03 266		Without hole
	Panel sign; "Winterhalter"	62002409		1 hole - "REG"
	Panel sign; "Winterhalter"	62001652		2 holes - "REG" and "DOS"
24	LED; red 12 V	31 08 111		REG
n.p.	LED; yellow 12 V	31 08 112		DOS
25	Thermostat; 1750 mm lg.	31 25 031	2	Short actuating shaft
26	Safety thermostat; 140° C - 10 K "OFF"	31 25 030		
27	Pushbutton switch; "W" green 250 V	31 24 185		ON-OFF
28	Lamp; white 230 V	31 08 116		HEATING
29	Pushbutton; white 250 V	31 24 130		PROGRAMME II
30	Sheet-metal screw; St 3.9 x 13	20 20 310		
31	Sheet-metal nut; B 3,9	21 17 303		
32	PT screw; KB 50 x 10	20 17 304		From machine no.: 231 801
33	Magnetic switch; 180 – 265 V; 50/60 Hz	31 24 221		
33	Clamping spring for level controller	31 26 001		
34	Level controller; 85/55 \pm 5; 16 A; 250 V	31 26 029		Violet-blue 50-60 Hz
35	Level controller holder	62001350		
n.p.	Feeder cable, 3-core; 3 x 2.5 mm ² x 3000	31 23 125		For GS 24 W
n.p.	Feeder cable, 5-core; 5 x 2.5 mm ² x 3000	31 23 132		For GS 24 D





GS24

Machine no.: 215 151 ⇨

Electrical parts II

Item	Designation	Part no.	Pc.	Notes
1	Relay box cover	62001792		
2	Fused plug	31 09 072	2	
3	Fine-wire use 250 V; 6.3 A	31 11 043	3	
4	Universal fuse terminal UK-Si	31 09 063	2	
5	PT screw KB 50 x 8	20 17 001		
6	Snap-on rail 8 x 35 x 162	62001772		
7	Cable harness cpl.	62002391		From machine no.: 231 801
	Cable harness cpl.	62001763		Up to machine no.: 231 800
8	Bottom part of relay box	62001791		
9	Sheet-metal nut B 3.9	21 17 300		
10	Washer A 4.3	22 05 300		
11	Sheet-metal screw B 3.5 x 13	20 20 304		
12	Electr. progr. switch EPS 1.1; 230V 50-60Hz	31 05 131		
	Electr. progr. switch EPS 1.1; 200/240V 50-60Hz	31 05 132		
n.p.	Fixed bridge, 2-pole	31 09 126		
n.p.	Fixed bridge, 3-pole	31 09 136		
13	Twin terminal UK 5 - Twin	31 09 115	3	Grey
14	Twin terminal UK 5 - Twin - BU	31 09 164	4	Blue
15	Twin terminal UK 5 - Twin - PE	31 09 165	2	Green/yellow
16	Isolating disk TS-K	31 09 066	2	
17	Radio interf. suppression capacitor 0.1 + 2 x 0.01 µF	31 13 077		From machine no.: 231 801
	Radio interf. suppression capacitor 0.1 + 2 x 0.01 µF	31 13 071		Up to machine no.: 231 800
n.p.	High-voltage flash sign	28 03 009		
n.p.	Additional wires for relay box	62002392		From machine no.: 231 801
	Additional wires for relay box	62001760		Up to machine no.: 231 800
n.p.	Clock generator	31 04 152		Pulse-controlled filling
n.p.	Wire assortment pulse-controlled filling	62002846		Pulse-controlled filling

