



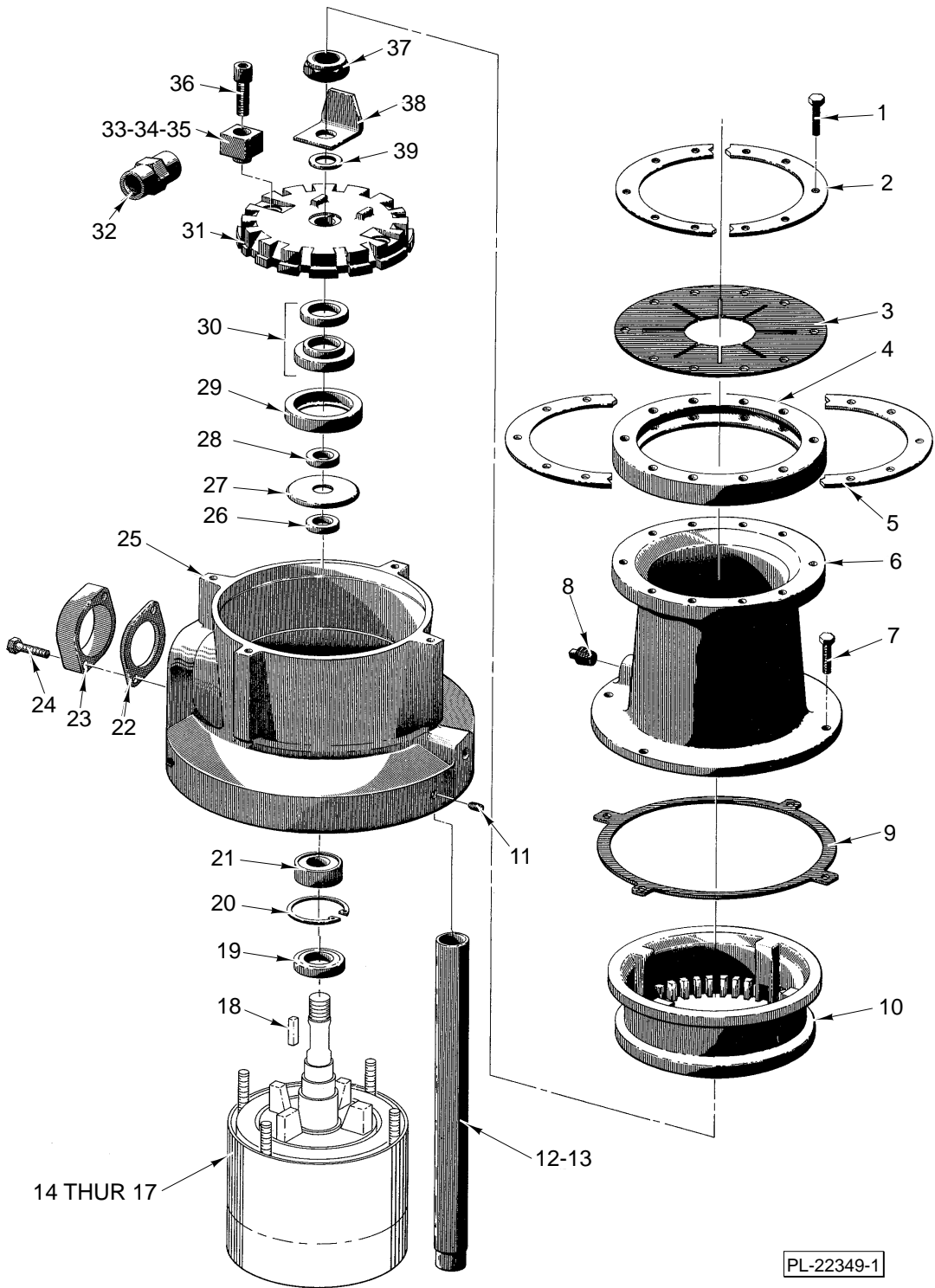
Replacement Parts



MODELS FD3-150, FD3-200 & FD3-300 FOOD WASTE DISPOSERS

ML-110301
ML-110305
ML-110309

FD3-150
FD3-200
FD3-300



DISPOSER UNIT

DISPOSER UNIT

ILLUS. PL-22349-1	PART NO.	NAME OF PART	AMT.
1	SC-118-16	Cap Screw ¼-20 x 1 ¾ Hex Hd.	10
2	203185	Ring - Top Cone Clamp (Half)	2
3	202105	Guard - Splash	1
4	201492	Ring - Isolating	1
5	203191	Ring - Bottom Cone Clamp (Half)	2
6	200942-2	Housing - Upper	1
7	SC-41-12	Cap Screw ⅝-18 x ⅞ Hex Hd.	4
8	FP-66-2	Plug ½ Sq. Hd. Pipe	1
9	289002	Gasket - Waste	1
10	201228	Ring - Shredder	1
11	SC-88-36	Set Screw ⅝-18 x ½ Hex Hd. Cup Pt.	3
12	288380-1	Leg & Bullet Foot	3
13	289026-1	Leg & Flanged Foot	3
14	475137-1	Motor (120/208-240 V., 60 Hz., 1 Ph.)(ML-110301 & ML-110305)	1
15	475137-2	Motor (110-120/220-240 V., 50 Hz., 1 Ph.)(ML-110301 & ML-110305)	1
16	475137-7	Motor (208-240/480 V.,60 Hz.,3 Ph. & 220-240/380-415 V.,50 Hz., 3 Ph.)(ML-110301)	1
17	475137-8	Motor (208-240/480 V.,60 Hz.,3 Ph. & 220-240/380-415 V.,50 Hz., 3 Ph.)(ML-110305 & ML-110309)	1
18	203619-1	Key - Shaft	2
19	288999	Seal - Oil	1
20	RR-6-2	Retaining Ring	1
21	BB-17-39	Ball Bearing - MRC 205 SZZ-01-ST-A-92-C	1
22	201420	Gasket - Spout	1
23	204852	Flange - Outlet	1
24	SC-36-40	Cap Screw ⅝-18 x 1 ¼ Hex Hd.	2
25	473199	Lower Housing	1
26	289012	Spacer	1
27	202724	Slinger - Water	1
28	289012	Spacer	1
29	203193	Support - Seal	1
30	114144	Water Seal Assy.	1
31	201210	Flywheel	1
32	292120	Flow Control (8 G.P.M.)	1
33	201223-3	Cutter - Flywheel (ML-110301)	2
34	201223-1	Cutter - Flywheel (ML-110305)	2
35	201223-4	Cutter - Flywheel (ML-110309)	2
36	202556-2	Screw	2
37	NS-31-43	Stop Nut ¾-16 "Elastic"	1
38	201234	Cutter - Hi-Bulk	1
39	272004	Seal - Shaft	1
	289037	Seal & Bearing Kit (Incls. items 19, 20, 26 thru 30 & 39)	1
	294904	Shim, Spring (Used Under Brg. Bracket End Motor Bearing)	1

The following is a list of replacement starters and overloads for the FD range of Waste Disposers, these parts are NOT interchangeable with the previous starters and overloads used on the FD2 range.

FD3-150 / FD3-300 BENCH MOUNTED

Part No,	Description
143932-1	Revering Starter
143932-18 /-20	Overload
141412	Bracket
59464-1	Solenoid Valve
PF-E-2-24	Line Strainer
137423	Outlet Spout
WA-E-1-12	Top Hat Washer
136567	Cover & Cone Assy
141410	Wiring Diagram

Double contactor SP-E-1-26

FD3-150 / FD3-300 TROUGH MOUNTED

Part No,	Description
143932-1	Revering Starter
143932-18 /-20	Overload
141412	Bracket
59464-1	Solenoid Valve
PF-E-2-24	Line Strainer
137423	Outlet Spout
WA-E-1-12	Top Hat Washer
138808	Adaptor Kit
141410	Wiring Diagram
140677	Wiring Diagram
140678	Wiring Diagram

Double contactor SP-E-1-26

Additional Parts

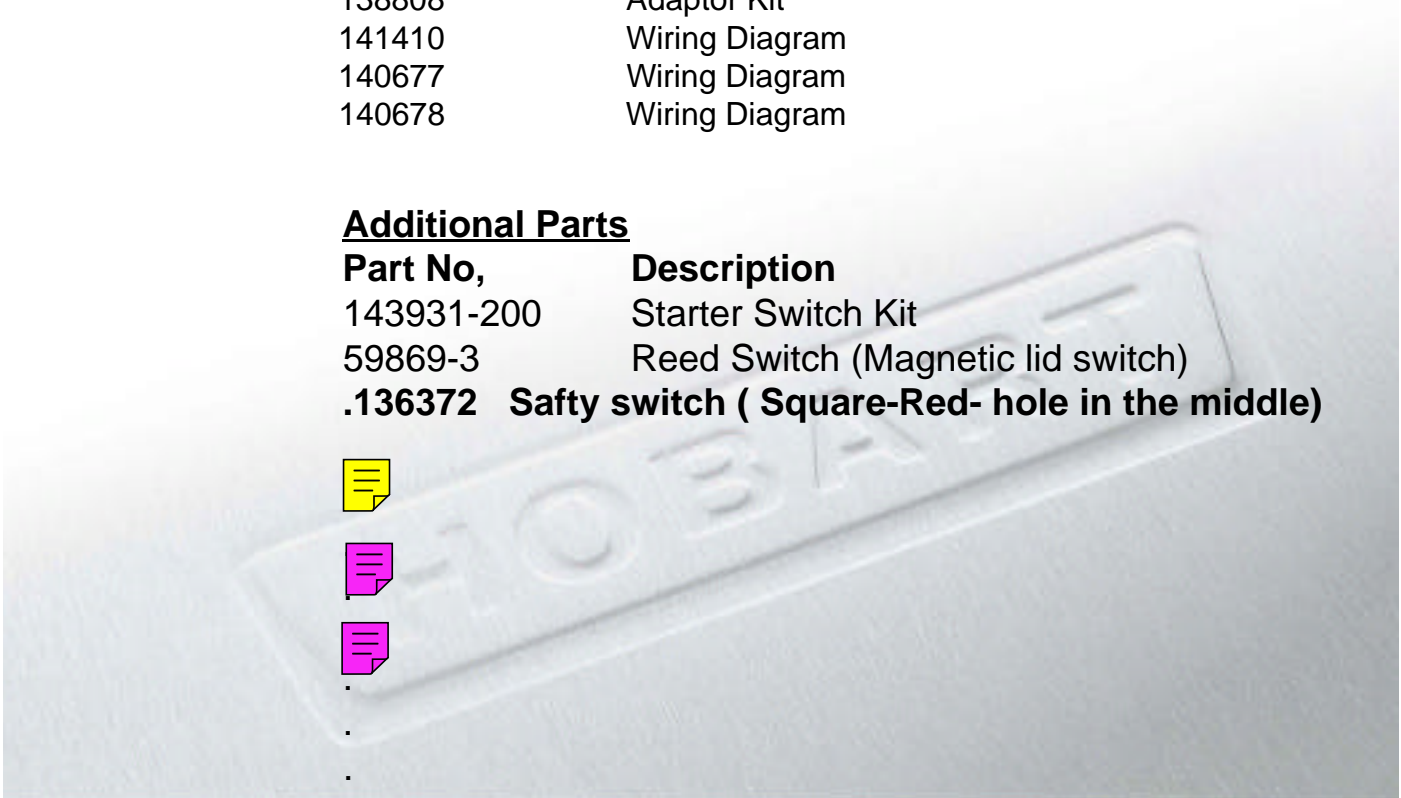
Part No,	Description
143931-200	Starter Switch Kit
59869-3	Reed Switch (Magnetic lid switch)
.136372	Safty switch (Square-Red- hole in the middle)



.

.

.



As continued product improvement is a policy of HOBART, specifications are subject to change without notice.

Ce catalogue n'est pas contractuel. HOBART se réserve le droit, et sans préavis, d'apporter toutes modifications ou améliorations à ses matériels.

HOBART behält sich das Recht vor, an allen Produkten technische Änderungen und Verbesserungen ohne Ankündigung vorzunehmen.

Voortdurende produktverbetering vormt een wezenlijk onderdeel van het beleid van HOBART. Specificaties kunnen zonder kennisgeving gewijzigd worden.