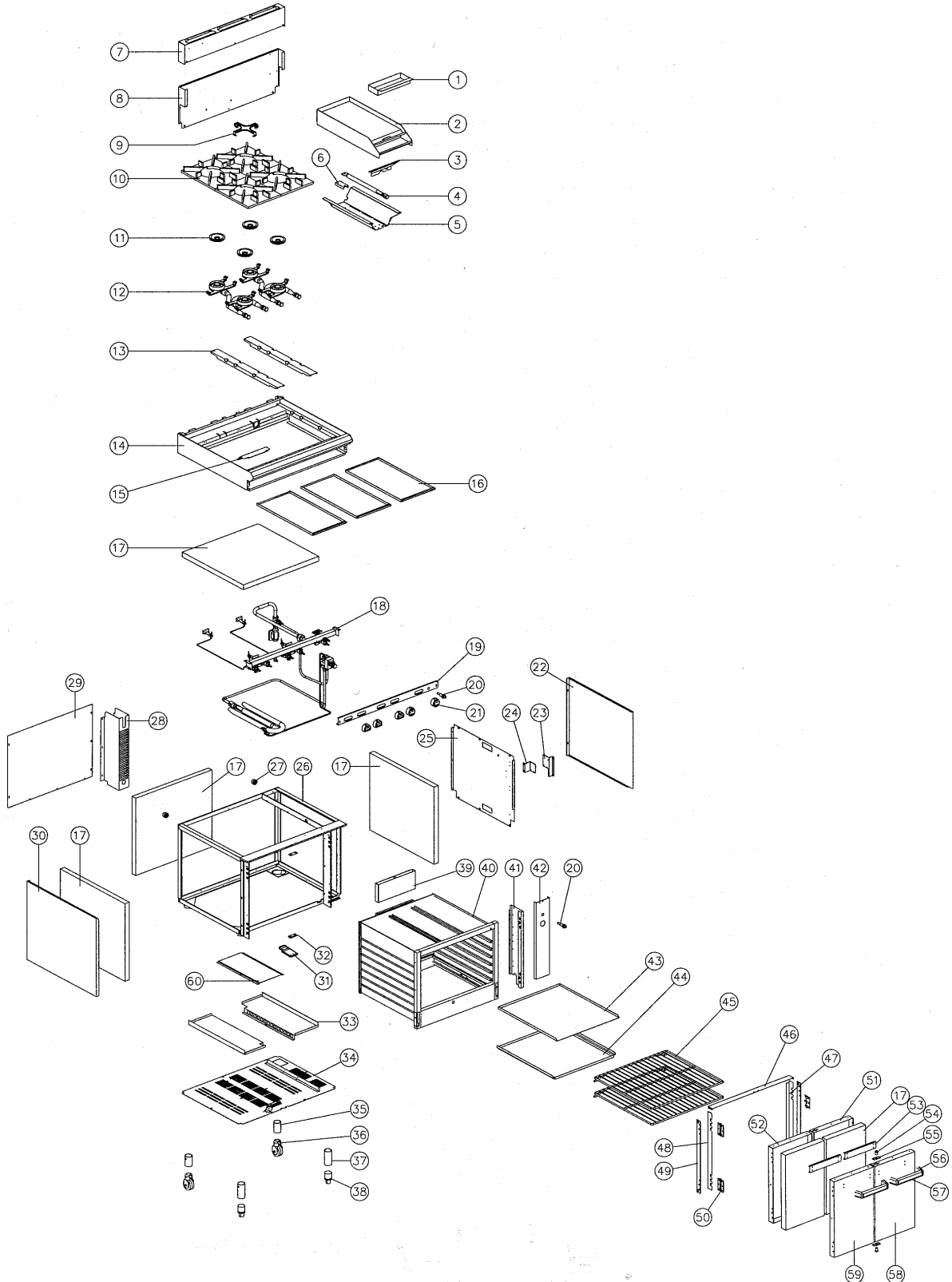


8. PARTS DIAGRAM

8.1 MAIN ASSEMBLY

G50C ILLUSTRATED

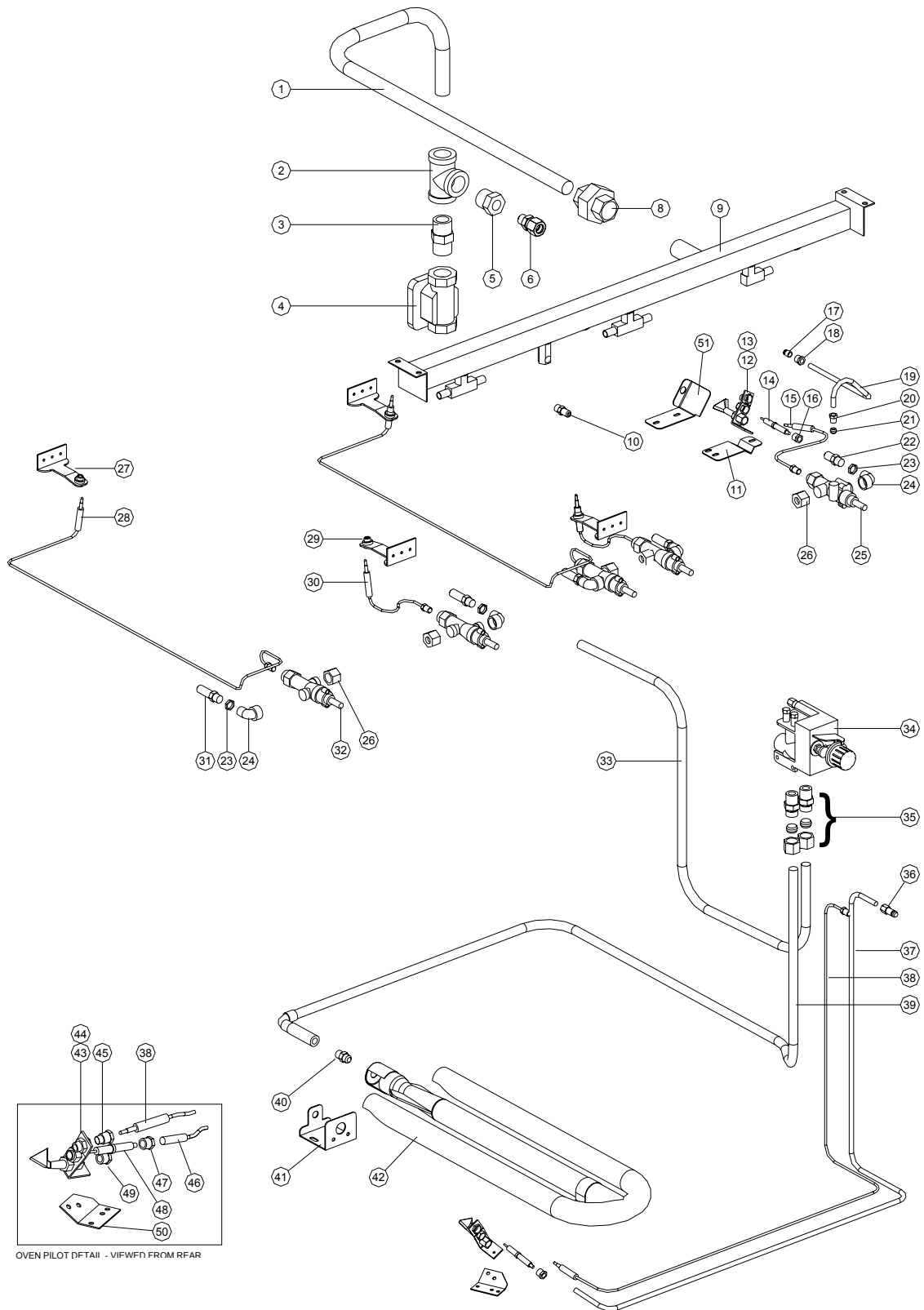


Pos	Part no.	Description
1	016511	TROUGH TRAY
2	016387	GRIDDLE ('A' OPTION)
	016386	GRIDDLE ('B' OPTION)
	016385	GRIDDLE ('C' OPTION)
3	019424	HEAT SHIELD
4	014105	GRIDDLE BURNER
5	019431	GRIDDLE REFLECTOR
6	014106	GRIDDLE BURNER BRACKET
7	012862	SPLASHBACK - G50
	012863	SPLASHBACK - G50-8
8	012849	HOB BACK PANEL - G50
	012850	HOB BACK PANEL - G50-8
9	016659	POT STAND SPIDER
10	004125	POT STAND
11	004618	BURNER CAP
12	004079	FRONT BURNER ASSEMBLY
	004080	REAR BURNER ASSEMBLY
13	019261	POT SUPPORT
14	012856	HOB - G50
	012858	HOB - G50-8
15	022064	HEAT SHIELD
16	004158	HOB TRAY
17	-----	INSULATION
18	-----	GAS PIPING ASSEMBLY (SEE SECTION 8.2)
19	004611	HOB CONTROL PANEL G50-A
	004610	HOB CONTROL PANEL G50-B
	004609	HOB CONTROL PANEL G50-C
	004608	HOB CONTROL PANEL G50-D
	004626	HOB CONTROL PANEL G50-8A
	004627	HOB CONTROL PANEL G50-8B
	004628	HOB CONTROL PANEL G50-8C
	004629	HOB CONTROL PANEL G50-8D
20	020119	PIEZO IGNITOR
	018095	H.T LEAD (NOT ILLUSTRATED)
21	019435	KNOB ASSEMBLY FRONT
	019436	KNOB ASSEMBLY REAR
22	015045	SIDE PANEL - R.H G50
	015046	SIDE PANEL - R.H G50-8
	015047	COVER PANEL G50-8
	012017	BASE PANEL G50-8
23	019260	CONTROL BRACKET - RH
24	019259	CONTROL BRACKET - LH
25	015042	SIDE INSULATION PANEL
26	004257	CHASSIS G50
	004258	CHASSIS G50-8
27	014157	SPACER FOOT
28	014798	GAS HOUSING
29	014804	BACK PANEL
	014925	SECOND BACK PANEL G50-8 ONLY
30	013249	SIDE PANEL - LH
31	004338	STRIKER PLATE EXTENSION
32	010254	STRIKER PLATE
33	004157	DRAUGHT BOX
34	014927	BOTTOM INSULATION PANEL
35	013661	LEG TUBE - CASTOR
	015139	CASTOR ASSEMBLY (34 & 35 ASSEMBLED)

36	012776	CASTOR ASSEMBLY
	015652	CASTOR YOKE
	011046	WHEEL - 75mm
	014854	WHEEL PIN
37	014873	LEG TUBE - ADJUSTABLE
	014872	ADJUSTABLE LEG ASSEMBLY (37 & 38 ASSEMBLED)
38	010990	ADJUSTABLE FOOT
39	012233	VENT
40	004259	OVEN
41	013247	SPACER PANEL
42	004612	OVEN CONTROL PANEL
43	004156	OVEN TRAY
44	011186	FLAME BAFFLE
45	010377	OVEN RACK
46	014314	OVEN TRIM - TOP
47	014356	OVEN TRIM - R.H
48	014355	OVEN TRIM - L.H
49	013248	HINGE PLATE
50	016406	BUTT HINGE
51	004334	DOOR INNER - R.H
52	004333	DOOR INNER - L.H
53	018138	HANDLE STIFFENER
54	011005	BALL & LOCKNUT
55	018789	BALL CATCH PLATE
56	018081K	HANDLE END CAP
57	018131	DOOR HANDLE
58	013243	DOOR OUTER - R.H
59	013244	DOOR OUTER - L.H
60	024023	RADIATION PANEL

8.2 GAS PIPING ASSEMBLY

G50C ILLUSTRATED



Pos	Part no.	Description
1	014803	HOB SUPPLY PIPE
2	011833	TEE - 3/4"
3	013473	NIPPLE - 3/4" HEX
4	011853	REGULATOR (NATURAL GAS ONLY)
5	012048	REDUCING BUSH - 3/8" x 3/4"
6	013837	CONNECTOR (FROM S/N 224660)
	011003	CONNECTOR - 1/2" x 3/8" (TO S/N 224659) – NOT ILLUSTRATED
	011002	CONE NUT (TO S/N 224659) – NOT ILLUSTRATED
8	011827	MACK UNION - 3/4"
9	004695	MANIFOLD G50 A
	004696	MANIFOLD G50 B
	004697	MANIFOLD G50 C
	004698	MANIFOLD G50 D
	004699	MANIFOLD G50-8 A
	004700	MANIFOLD G50-8 B
	004701	MANIFOLD G50-8 C
	004702	MANIFOLD G50-8 D
10	019371	PRESSURE TEST POINT
11	019425	GRIDDLE PILOT BRACKET
12	019215K	GRIDDLE PILOT BURNER KIT (INCLUDES ITEMS 13,14,16,17,18)
13	018692	PILOT INJECTOR Ø0.20mm - PROPANE GAS (INCLUDED AS PART OF ITEM 12)
	018693	PILOT INJECTOR Ø0.32mm - NATURAL GAS (INCLUDED AS PART OF ITEM 12)
14	018744	PILOT ELECTRODE (INCLUDED AS PART OF ITEM 12)
15	019428	THERMOCOUPLE - GRIDDLE
16	018742	ELECTRODE NUT (INCLUDED AS PART OF ITEM 12)
17	018739	OLIVE (INCLUDED AS PART OF ITEM 12)
18	018740	COMPRESSION NUT 1/4" (INCLUDED AS PART OF ITEM 12)
19	019262	GRIDDLE PILOT SUPPLY TUBE
20	017805	COMPRESSION NUT
21	017806	OLIVE
22	034120	GRIDDLE INJECTOR Ø1.20mm - PROPANE GAS
	034210	GRIDDLE INJECTOR Ø2.10mm - NATURAL GAS
23	011740	BACKNUT - 1/8" (UP TO S/N 246144)
24	019335	ELBOW - 1/8" x 1/4" (ASSEMBLED AS PART OF ITEM 25)
25	017800	GAS CONTROL - GRIDDLE
26	017804	SPIGOT NUT
	017803	OLIVE (NOT ILLUSTRATED)
27	019413	THERMOCOUPLE BRACKET - REAR
	018741	TARGET CLAMP NUT (NOT ILLUSTRATED)
28	019429	THERMOCOUPLE - REAR
29	019412	THERMOCOUPLE BRACKET - FRONT
	018741	TARGET CLAMP NUT (NOT ILLUSTRATED)
30	019428	THERMOCOUPLE - FRONT
31	037110	OPEN BURNER INJECTOR Ø1.10mm - PROPANE GAS
	037190	OPEN BURNER INJECTOR Ø1.90mm - NATURAL GAS
32	019430	GAS CONTROL - OPEN BURNERS
33	019255	CONTROL SUPPLY PIPE
34	019406K	GAS CONTROL KIT - OVEN THERMOSTAT
	022407	LOW FIRE SCREW - LPG 0.95mm
	022408	LOW FIRE SCREW - NAT 1.50mm
35	013837	CONNECTOR - 3/8" x 1/2"
36	018097	1/4" NUT & OLIVE
37	019258	PILOT TUBE
38	020253	THERMOCOUPLE - OVEN
39	019256	OVEN SUPPLY PIPE

40	032150	OVEN INJECTOR Ø1.50mm - PROPANE GAS
	032230	OVEN INJECTOR Ø2.30mm - NATURAL GAS
41	012254	INJECTOR SUPPORT BRACKET
42	011310	OVEN BURNER
43	018691K	OVEN PILOT BURNER KIT (INCLUDES ITEMS 44,45,47,48,49)
44	019217	OVEN PILOT INJECTOR Ø0.23mm - PROPANE GAS (INCLUDED AS PART OF ITEM 43)
	018693	OVEN PILOT INJECTOR Ø0.32mm - NATURAL GAS (INCLUDED AS PART OF ITEM 43)
45	018741	CLAMP NUT (INCLUDED AS PART OF ITEM 43)
46	019407	H.T LEAD - OVEN
47	018742	ELECTRODE NUT (INCLUDED AS PART OF ITEM 43)
48	018744	PILOT ELECTRODE (INCLUDED AS PART OF ITEM 43)
49	018740	COMPRESSION NUT (INCLUDED AS PART OF ITEM 43)
	018739	OLIVE (NOT ILLUSTRATED)(INCLUDED AS PART OF ITEM 43)
50	019330	OVEN PILOT BRACKET
51	023863	GRIDDLE PILOT DRAFT BAFFLE (FROM S/N 215176)